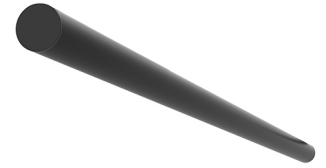


LIGHT TUBE INDIRECT 900 MM

Number of heads	1
Mounting	Track mounting
Lamps description	Top LED 25W/m 1818 lm 3000K CRI 90
Luminaire luminous flux	See reference number
Voltage (V)	48
Environment	Indoor
Notes	Turning fastening elements 0°-90° with a magnetic connection and mechanic security bock for a transversally installation between two lines of the profile. The Light Tube are only fed by one od the ends and do not communicate current through the other end.



OPTICAL

Aiming	Fixed
Light distribution symmetry	Symmetric
Beam angle	102°

Light Tube Indirect 900 mm designed by Vincent Van Duysen

Diffused LED light module to be installed in The Infra-Structure System.

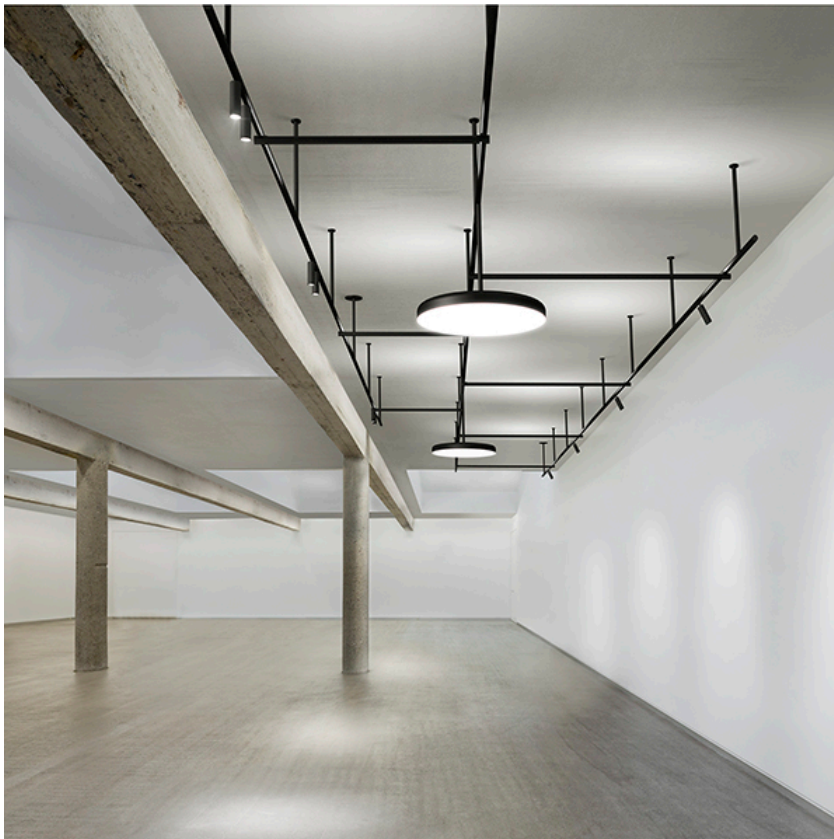
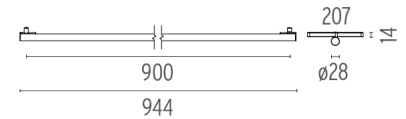
ELECTRICAL

Transformer availability	Separate item
Transformer mounting	Remote
Transformer type	Electronic dimmable
Emergency	Without

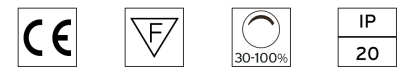
● 03.6388.14 - 1366lm	Black
● 03.6388.40 - 1336lm	White

PHYSICAL

Length (mm)	900
--------------------	-----



CERTIFICATIONS



Light Tube Indirect 900 mm . Lamps

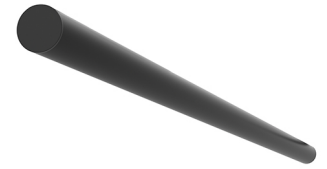


Top LED

Lamp category:
LED

Socket:
Special base

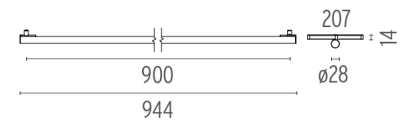
Lamp type:
Top LED



Light Tube Indirect 900 mm designed by Vincent Van Duysen

Diffused LED light module to be installed in The Infra-Structure System.

●	03.6388.14 - 1366lm	Black
●	03.6388.40 - 1336lm	White



CERTIFICATIONS

