

MULTI SPOT 4 ON BOARD DIMMER

Number of heads	1
Mounting	Track mounting
Lamps description	Power LED 10W 4 x 226 lm 2700K CRI 90
Luminaire luminous flux	Extreme Cut-off. See reference number
Voltage (V)	24
Environment	Indoor

OPTICAL

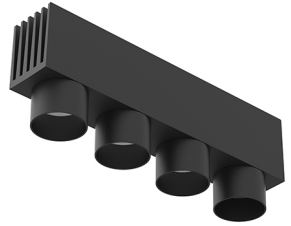
Aiming	Fixed
Light distribution symmetry	Symmetric
Beam angle	11° Spot

ELECTRICAL

Transformer availability	Separate item
Transformer mounting	Remote
Transformer type	Electronic dimmable
Emergency	Without
Insulation class	Class III

PHYSICAL

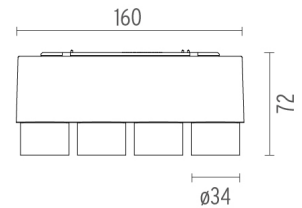
Spot diameter (mm)	34
Weight (kg)	0,35



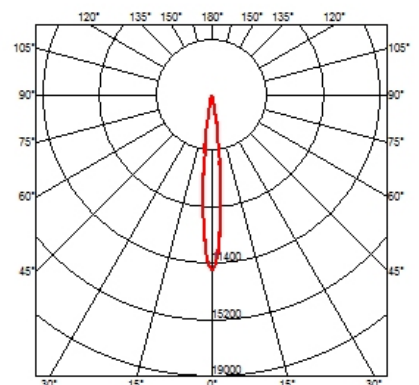
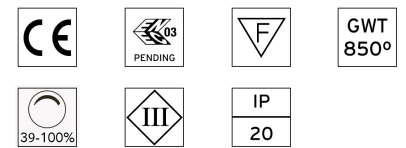
Multi Spot 4 On Board Dimmer designed by FLOS Architectural

Accent lighting LED module to be installed in The Running Magnet 2.0 System. Built-in DC/DC electronic voltage converter.

● 03.6305.14 - 630lm Black



CERTIFICATIONS



Multi Spot 4 On Board Dimmer . Accessories

Optical



08.8760.00

Frosted medium lens

Flood lens accessory. Spot Module 20,6° / Multi Spot 21°



08.8761.00

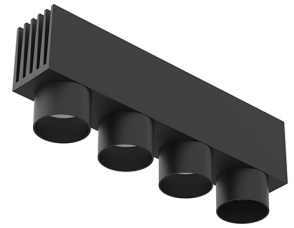
Frosted medium lens

Wide Flood lens accessory. Spot Module 30,6° / Multi Spot 28°



08.8759.00

Elliptical Lens



Multi Spot 4 On Board Dimmer designed by FLOS Architectural

Accent lighting LED module to be installed in The Running Magnet 2.0 System. Built-in DC/DC electronic voltage converter.

● 03.6305.14 - 630lm Black

Multi Spot 4 On Board Dimmer . Lamps

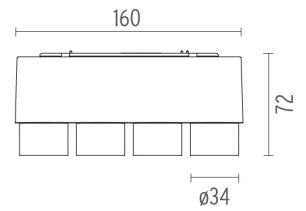


Power LED

Lamp category:
LED

Socket:
Special base

Lamp type:
Power LED



CERTIFICATIONS

