

WAN SPOT

Number of heads	1
Mounting	Ceiling surface
Lamps description	LED Array DC 500 mA 9,2W 945 lm 3000K CRI 80
Luminaire luminous flux	See reference number
Environment	Indoor

OPTICAL

Light controller description	Protection glass
Aiming	Adjustable
Light distribution symmetry	Symmetric
Beam angle	83°

ELECTRICAL

Transformer availability	Separate item
Transformer mounting	Remote
Transformer type	Electronic, Electronic dimmable, Electronic dimmable I-10V, Electronic dimmable dali Without
Emergency	Without
Insulation class	Class III

PHYSICAL

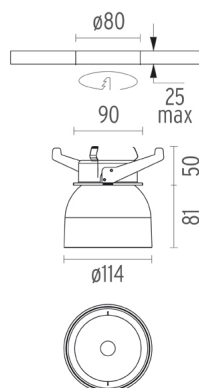
Cutout diameter (mm)	80
Spot diameter (mm)	114
Construction material	Aluminium
Weight (kg)	0,50



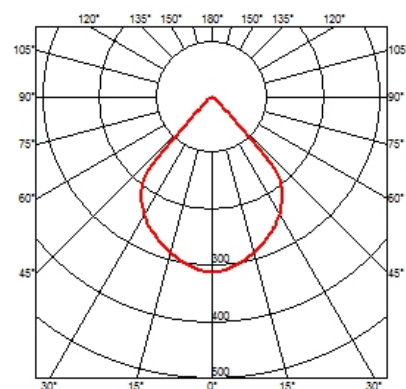
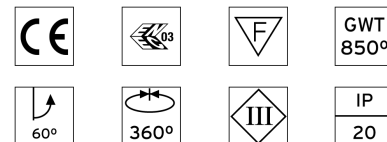
Wan Spot
designed by Johanna Grawunder

Spotlight to be installed recessed on ceiling/wall. Power supply not included.

03.6174.30A - 436lm	White
03.6174.05A - 436lm	Polished aluminium
03.6174.14A - 436lm	Black
03.6174.GNA - 436lm	Green



CERTIFICATIONS



Wan Spot . Accessories

Power Supply



60.8650

Constant Current Power Supply for LED. 20W / 500 mA

Non dimmable continuous current power supply 220/240V - 50/60Hz. (110V = 12V)

Maximum length of 1.5 mm² secondary conductor (m): 50

Maximum length of 2.5 mm² secondary conductor (m): 50



60.8847

Constant Current Power Supply for LED. 10-20W

Continuous current power supply of 10-20W, 110/240V - 50/60Hz with power current selected through adjustable 250/350/400/450/500/ 550/600/700 mA Dali switch. (Johnny I20 with accessories max 450 mA)

Maximum length of 1.5 mm² secondary conductor (m): 10

Maximum length of 2.5 mm² secondary conductor (m): 15



60.8534

Constant Current Power Supply for LED. 32W

Continuous current power supply of 32W, 230/240V - 50/60Hz with power current selected through adjustable 350/500/700 mA switch by trailing and leading edge dimming or push dimming.

Maximum length of 1.5 mm² secondary conductor (m): 10

Maximum length of 2.5 mm² secondary conductor (m): 15



60.8533

Constant Current Power Supply for LED. 25W

Continuous current power supply of 25W, 120-240V - 50/60Hz with power current selected through adjustable 350/500/700mA 1-10V switch or push dimming.

Maximum length of 1.5 mm² secondary conductor (m): 10

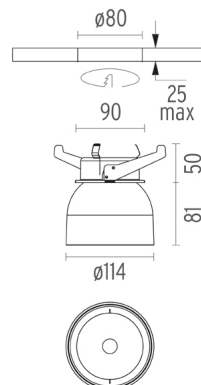
Maximum length of 2.5 mm² secondary conductor (m): 15



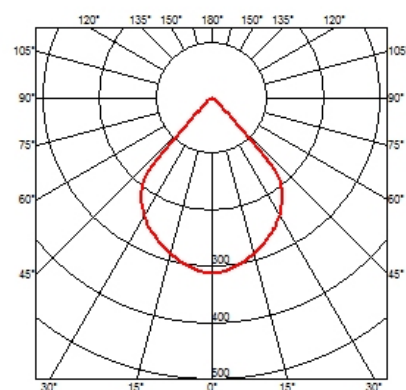
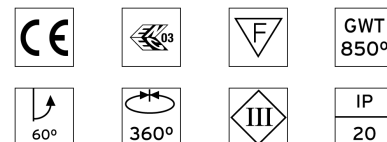
Wan Spot
designed by Johanna Grawunder

Spotlight to be installed recessed on ceiling/wall. Power supply not included.

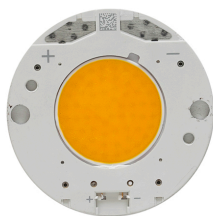
03.6174.30A - 436lm	White
03.6174.05A - 436lm	Polished aluminium
03.6174.14A - 436lm	Black
03.6174.GNA - 436lm	Green



CERTIFICATIONS



Wan Spot . Lamps



LED Array

Lamp category:
LED

Socket:
Special base

Lamp type:
LED Array

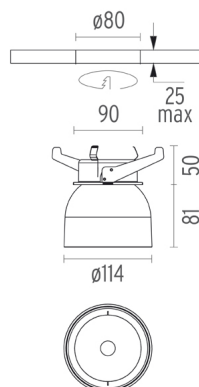


Wan Spot

designed by Johanna Grawunder

Spotlight to be installed recessed on ceiling/wall. Power supply not included.

03.6174.30A - 436lm	White
03.6174.05A - 436lm	Polished aluminium
03.6174.14A - 436lm	Black
03.6174.GNA - 436lm	Green



CERTIFICATIONS

