

## LIGHT SNIPER WALL-WASHER SQUARE

Number of heads	1
Mounting	Ceiling recessed
Lamps description	Power LED 11W 910 lm 2700K CRI 90
Luminaire luminous flux	Extreme Cut-off. See reference number
Voltage (V)	220/240
Environment	Indoor

### OPTICAL

Light controller description	Bare lamps
Aiming	Fixed
Light distribution symmetry	Asymmetric
Beam angle	34°

### ELECTRICAL

Transformer availability	Included
Transformer mounting	Remote
Transformer type	Electronic
Emergency	Without
Insulation class	Class II

### PHYSICAL

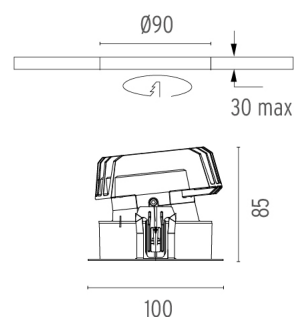
Cutout diameter (mm)	90
Recessed depth (mm)	145
Construction material	Aluminium
Weight (kg)	0,49



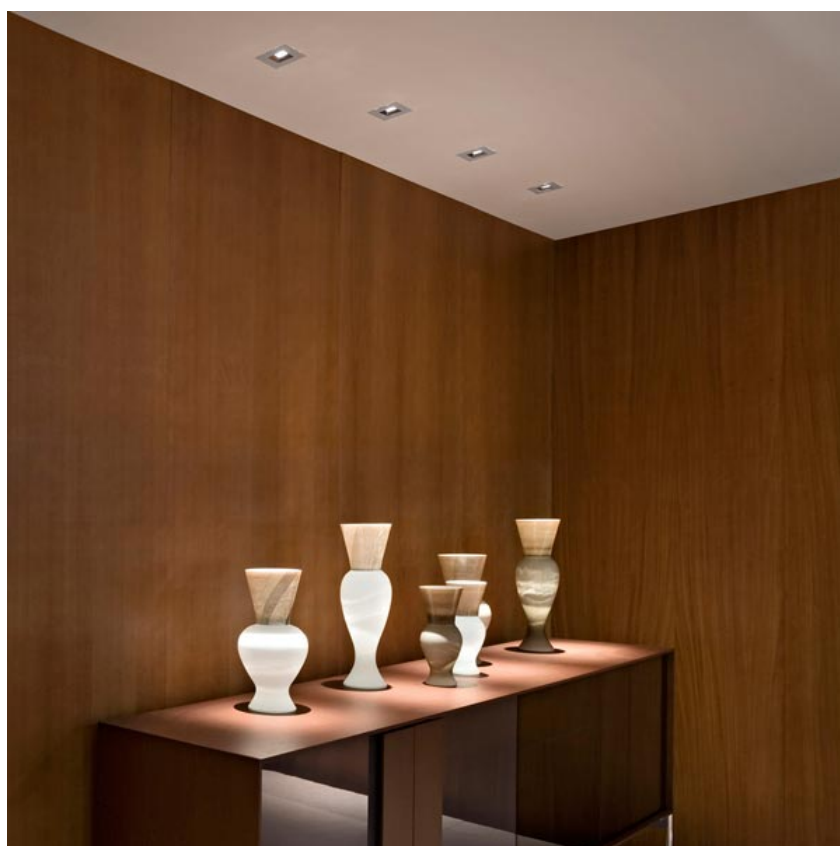
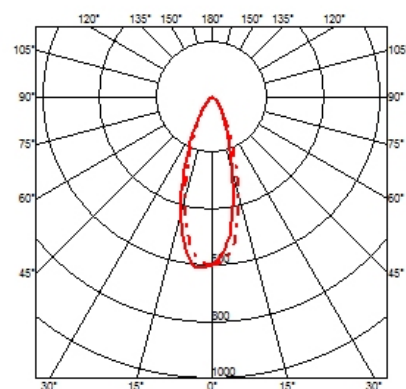
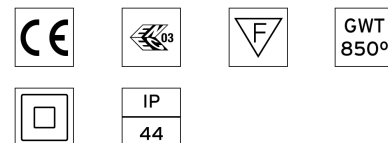
**Light Sniper Wall-Washer Square**  
designed by FLOS Architectural

High-performance embedded light fixture for LED light source. Remote 220-240V power supply included.

03.4991.06 - 316lm Chrome



### CERTIFICATIONS



## Light Sniper Wall-Washer Square . Accessories

### Optical



08.8041.68

#### Elliptical light distribution lens

Elliptical light distribution lens in 4mm thick tempered glass.



08.8412.14

#### Honeycomb

"Honeycomb" anti-glare grid made of aluminium cells.

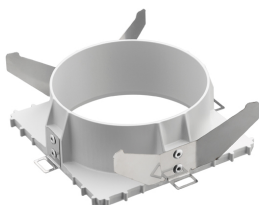


**Light Sniper Wall-Washer Square**  
designed by FLOS Architectural

High-performance embedded light fixture for LED light source. Remote 220-240V power supply included.

03.4991.06 - 316lm Chrome

### Mounting



08.8240.00B

#### Flush ceiling square frame accessory

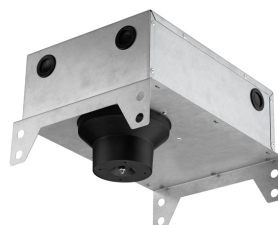


08.8243.00

08.8243.00.5U

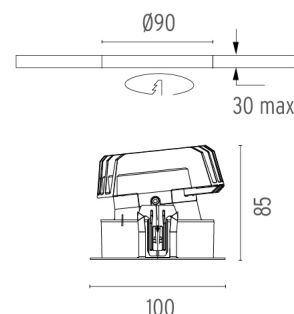
08.8243.00.1U

#### Ceiling protector accessory.

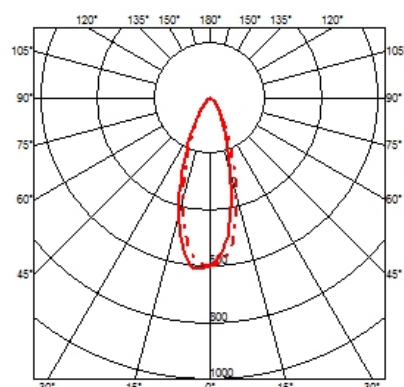


08.8250.00

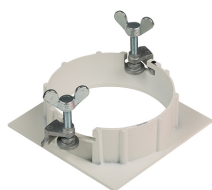
#### Concrete installation can.



### CERTIFICATIONS

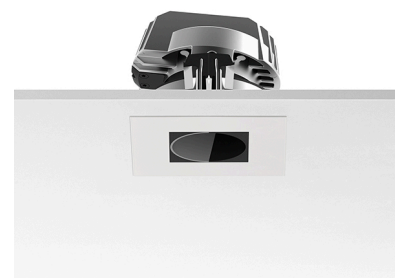


## Light Sniper Wall-Washer Square . Accessories



08.8222.30A

**Ceiling protector  
accessory. Square**



**Light Sniper Wall-Washer Square**  
designed by FLOS Architectural

High-performance embedded light  
fixture for LED light source. Remote  
220-240V power supply included.

03.4991.06 - 316lm Chrome

## Light Sniper Wall-Washer Square . Lamps



**Power LED**

**Lamp category:**

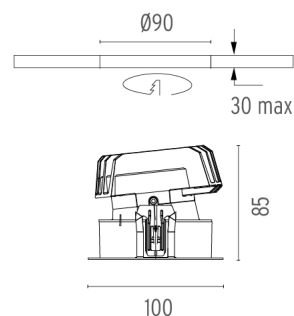
LED

**Socket:**

Special base

**Lamp type:**

Power LED



## CERTIFICATIONS

