

## LIGHT SNIPER ADJUSTABLE ROUND DALI

Number of heads	1
Mounting	Ceiling recessed
Lamps description	Phosphor LED 9W 800 lm 3000K CRI 98
Luminaire luminous flux	Extreme Cut-off. See reference number
Voltage (V)	220/240
Environment	Indoor

### OPTICAL

Light controller description	Bare lamps
Aiming	Adjustable
Light distribution symmetry	Symmetric
Beam angle	35°

### ELECTRICAL

Transformer availability	Included
Transformer mounting	Remote
Transformer type	Electronic dimmable dali
Emergency	Without
Insulation class	Class II

### PHYSICAL

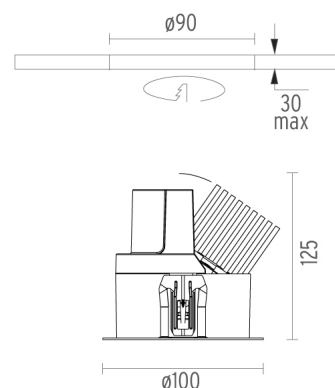
Cutout diameter (mm)	90
Diameter (mm)	100
Recessed depth (mm)	125
Construction material	Aluminium
Weight (kg)	0,51



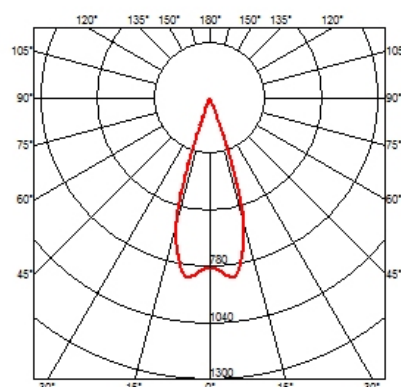
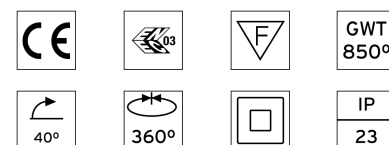
**Light Sniper Adjustable Round Dali**  
designed by FLOS Architectural

High-performance embedded light fixture for LED light source. Remote 220-240V power supply included.

- 03.4682.06ADA - 248lm Chrome
- 03.4682.GLADA - 248lm Gold
- 03.4682.14ADA - 248lm Matt black



### CERTIFICATIONS



## Light Sniper Adjustable Round Dali . Accessories

### Mounting



08.8239.00B

**Flush ceiling round frame accessory**

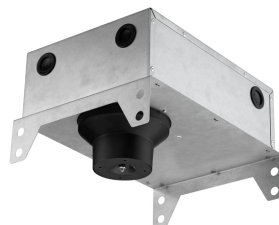


08.8243.00

08.8243.00.5U

08.8243.00.1U

**Ceiling protector accessory.**



08.8250.00

**Concrete installation can.**



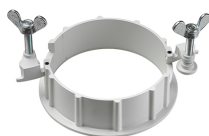
**Light Sniper Adjustable Round Dali**  
designed by FLOS Architectural

High-performance embedded light fixture for LED light source. Remote 220-240V power supply included.

03.4682.06ADA - 248lm Chrome

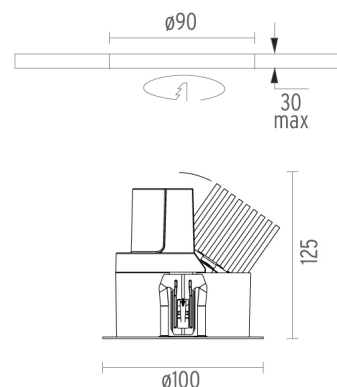
03.4682.GLADA - 248lm Gold

03.4682.14ADA - 248lm Matt black

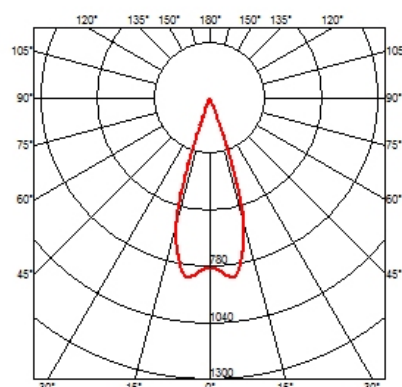


08.8229.30A

**Ceiling protector accessory. Round**



### CERTIFICATIONS



## Light Sniper Adjustable Round Dali . Lamps



### Phosphor LED

**Lamp category:**  
LED

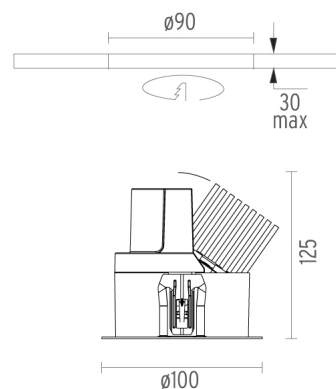
**Lamp type:**  
Phosphor LED



**Light Sniper Adjustable Round Dali**  
designed by FLOS Architectural

High-performance embedded light fixture for LED light source. Remote 220-240V power supply included.

- 03.4682.06ADA - 248lm Chrome
- 03.4682.GLADA - 248lm Gold
- 03.4682.14ADA - 248lm Matt black



### CERTIFICATIONS

