

## LIGHT SNIPER WALL-WASHER ROUND

<b>Number of heads</b>	1
<b>Mounting</b>	Ceiling recessed
<b>Lamps description</b>	QR-CBC 5I GX5.3 Max 50W
<b>Voltage (V)</b>	12
<b>Environment</b>	Indoor

### OPTICAL

<b>Light controller description</b>	Lens
<b>Aiming</b>	Fixed
<b>Light distribution symmetry</b>	Asymmetric
<b>Beam angle</b>	10°, 24°, 36°, 38°, 60°

### ELECTRICAL

<b>Transformer availability</b>	Separate item
<b>Transformer mounting</b>	Remote
<b>Transformer type</b>	Electronic dimmable
<b>Emergency</b>	Without
<b>Insulation class</b>	Class III

### PHYSICAL

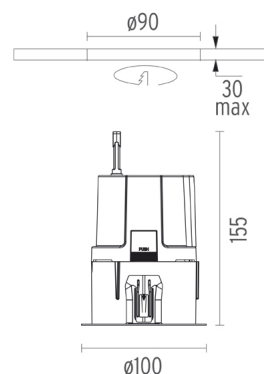
<b>Cutout diameter (mm)</b>	90
<b>Diameter (mm)</b>	100
<b>Recessed depth (mm)</b>	155
<b>Construction material</b>	Aluminium
<b>Weight (kg)</b>	0,50



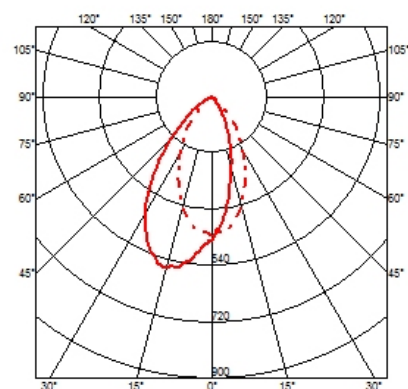
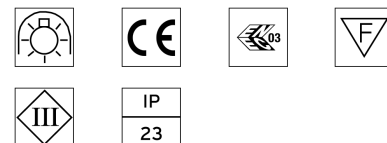
**Light Sniper Wall-Washer Round**  
designed by FLOS Architectural

High performance 12V halogen lamp recessed downlight. Remote transformer not included

03.4650.06 Chrome



### CERTIFICATIONS



## Light Sniper Wall-Washer Round . Accessories

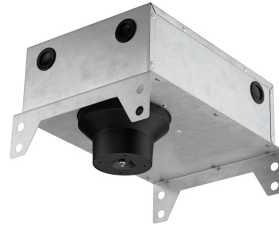
### Mounting



08.8239.00B  
**Flush ceiling round frame accessory**



08.8243.00  
08.8243.00.5U  
08.8243.00.1U  
**Ceiling protector accessory.**



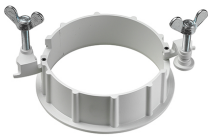
08.8250.00  
**Concrete installation can.**



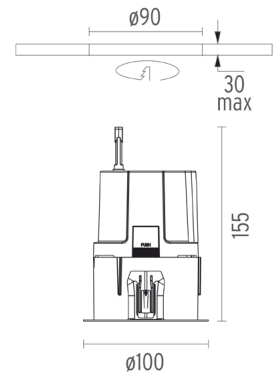
**Light Sniper Wall-Washer Round**  
designed by FLOS Architectural

High performance 12V halogen lamp recessed downlight. Remote transformer not included

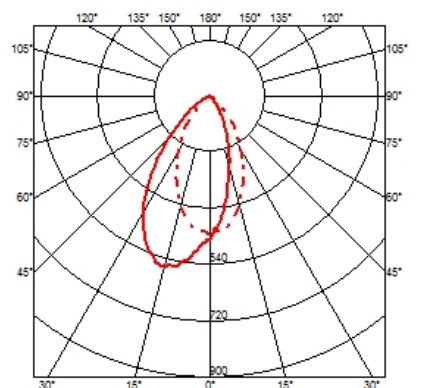
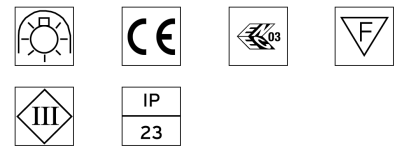
03.4650.06 Chrome



08.8229.30A  
**Ceiling protector accessory. Round**



### CERTIFICATIONS



## Light Sniper Wall-Washer Round . Lamps



60.6392  
**QR-CBC 51**  
**Lamp Watt:**  
 20 W  
**Lamp category:**  
 Halogen low voltage  
**Socket:**  
 GX5.3  
**Lamp angle:**  
 10 °  
**Color temperature (K):**  
 3000 °K  
**Catalog reference:**  
 60.6392  
**Lamp type:**  
 QR-CBC 51



60.6359  
**QR-CBC 51**  
**Lamp Watt:**  
 50 W  
**Lamp category:**  
 Halogen low voltage  
**Socket:**  
 GX5.3  
**Lamp angle:**  
 24 °  
**Color temperature (K):**  
 3000 °K  
**Catalog reference:**  
 60.6359  
**Lamp type:**  
 QR-CBC 51



60.6360  
**QR-CBC 51**  
**Lamp Watt:**  
 50 W  
**Lamp category:**  
 Halogen low voltage  
**Socket:**  
 GX5.3  
**Lamp angle:**  
 38 °  
**Color temperature (K):**  
 3000 °K  
**Catalog reference:**  
 60.6360  
**Lamp type:**  
 QR-CBC 51



60.6361  
**QR-CBC 51**  
**Lamp Watt:**  
 50 W  
**Lamp category:**  
 Halogen low voltage  
**Socket:**  
 GX5.3  
**Lamp angle:**  
 60 °  
**Color temperature (K):**  
 3000 °K  
**Catalog reference:**  
 60.6361  
**Lamp type:**  
 QR-CBC 51



60.6393  
**QR-CBC 51**  
**Lamp Watt:**  
 20 W  
**Lamp category:**  
 Halogen low voltage  
**Socket:**  
 GX5.3  
**Lamp angle:**  
 24 °  
**Color temperature (K):**  
 3000 °K  
**Catalog reference:**  
 60.6393  
**Lamp type:**  
 QR-CBC 51



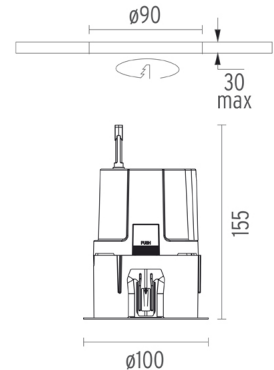
60.6394  
**QR-CBC 51**  
**Lamp Watt:**  
 20 W  
**Lamp category:**  
 Halogen low voltage  
**Socket:**  
 GX5.3  
**Lamp angle:**  
 38 °  
**Color temperature (K):**  
 3000 °K  
**Catalog reference:**  
 60.6394  
**Lamp type:**  
 QR-CBC 51



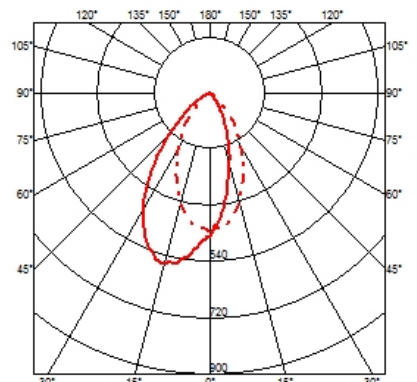
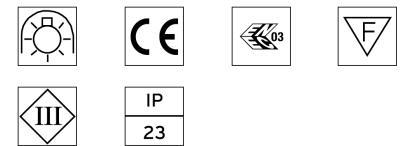
**Light Sniper Wall-Washer Round**  
 designed by FLOS Architectural

High performance 12V halogen lamp  
 recessed downlight. Remote  
 transformer not included

03.4650.06 Chrome



### CERTIFICATIONS



## Light Sniper Wall-Washer Round . Lamps



60.6395  
**QR-CBC 51**  
**Lamp Watt:**  
 20 W  
**Lamp category:**  
 Halogen low voltage  
**Socket:**  
 GX5.3  
**Lamp angle:**  
 60 °  
**Color temperature (K):**  
 3000 °K  
**Catalog reference:**  
 60.6395  
**Lamp type:**  
 QR-CBC 51



60.6355  
**QR-CBC 51**  
**Lamp Watt:**  
 35 W  
**Lamp category:**  
 Halogen low voltage  
**Socket:**  
 GX5.3  
**Lamp angle:**  
 24 °  
**Color temperature (K):**  
 3000 °K  
**Catalog reference:**  
 60.6355  
**Lamp type:**  
 QR-CBC 51



60.6356  
**QR-CBC 51**  
**Lamp Watt:**  
 35 W  
**Lamp category:**  
 Halogen low voltage  
**Socket:**  
 GX5.3  
**Lamp angle:**  
 38 °  
**Color temperature (K):**  
 3000 °K  
**Catalog reference:**  
 60.6356  
**Lamp type:**  
 QR-CBC 51



60.6357  
**QR-CBC 51**  
**Lamp Watt:**  
 35 W  
**Lamp category:**  
 Halogen low voltage  
**Socket:**  
 GX5.3  
**Lamp angle:**  
 60 °  
**Color temperature (K):**  
 3000 °K  
**Catalog reference:**  
 60.6357  
**Lamp type:**  
 QR-CBC 51



BU19  
**QR-CBC 51**  
**Lamp Watt:**  
 20 W  
**Lamp category:**  
 Halogen low voltage  
**Socket:**  
 GX5.3  
**Lamp angle:**  
 38 °  
**Color temperature (K):**  
 3000 °K  
**Catalog reference:**  
 BU19  
**Lamp type:**  
 QR-CBC 51



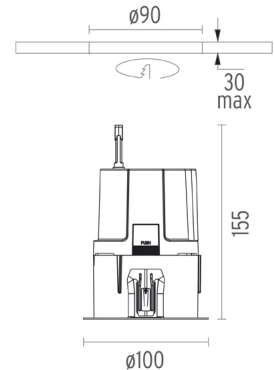
BU20  
**QR-CBC 51**  
**Lamp Watt:**  
 35 W  
**Lamp category:**  
 Halogen low voltage  
**Socket:**  
 GX5.3  
**Lamp angle:**  
 38 °  
**Color temperature (K):**  
 3000 °K  
**Catalog reference:**  
 BU20  
**Lamp type:**  
 QR-CBC 51



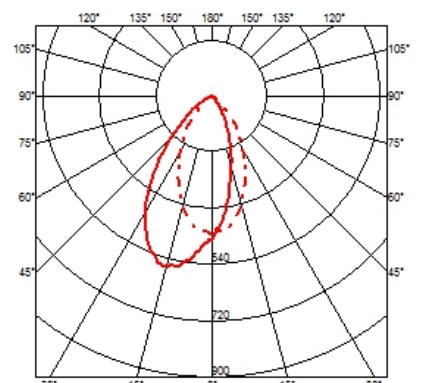
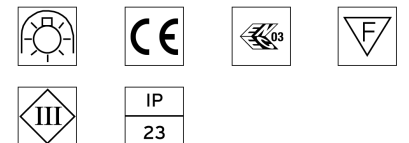
**Light Sniper Wall-Washer Round**  
 designed by FLOS Architectural

High performance 12V halogen lamp  
 recessed downlight. Remote  
 transformer not included

03.4650.06 Chrome



### CERTIFICATIONS



## Light Sniper Wall-Washer Round . Lamps



BU2I

**QR-CBC 5I**

**Lamp Watt:**

50 W

**Lamp category:**

Halogen low voltage

**Socket:**

GX5.3

**Lamp angle:**

60 °

**Color temperature (K):**

3000 °K

**Catalog reference:**

BU2I

**Lamp type:**

QR-CBC 5I

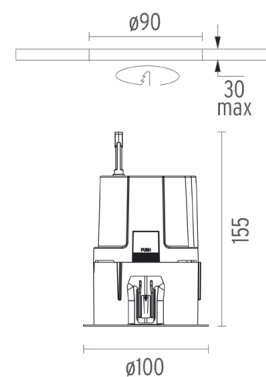


**Light Sniper Wall-Washer Round**  
designed by FLOS Architectural

High performance 12V halogen lamp  
recessed downlight. Remote  
transformer not included

03.4650.06

Chrome



### CERTIFICATIONS

