

LIGHT SNIPER FIXED ROUND I-10V

Number of heads	1
Mounting	Ceiling recessed
Lamps description	Phosphor LED 9W 800 lm 3000K CRI 98
Luminaire luminous flux	Extreme Cut-off. See reference number
Voltage (V)	220/240
Environment	Indoor

OPTICAL

Light controller description	Bare lamps
Aiming	Fixed
Light distribution symmetry	Symmetric
Beam angle	23°

ELECTRICAL

Transformer availability	Included
Transformer mounting	Remote
Transformer type	Electronic dimmable I-10V
Emergency	Without
Insulation class	Class II




PHYSICAL

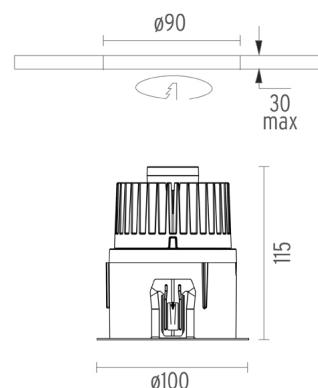
Cutout diameter (mm)	90
Diameter (mm)	100
Recessed depth (mm)	115
Construction material	Aluminium
Weight (kg)	0,51



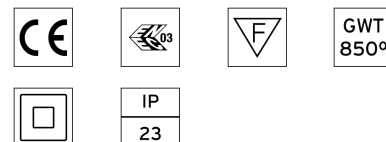
Light Sniper Fixed Round I-10V
designed by FLOS Architectural

High-performance embedded light fixture for LED light source. Remote 220-240V power supply included.

	03.4632.06AIV - 138lm	Chrome
	03.4632.GLAIV - 138lm	Gold
	03.4632.14AIV - 138lm	Matt black



CERTIFICATIONS



Light Sniper Fixed Round I-10V . Accessories

Mounting



08.8239.00B

Flush ceiling round frame accessory

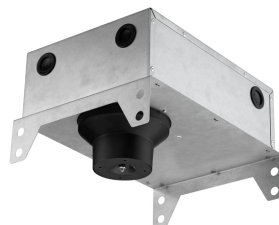


08.8243.00

08.8243.00.5U

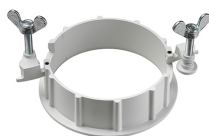
08.8243.00.1U

Ceiling protector accessory.



08.8250.00

Concrete installation can.



08.8229.30A

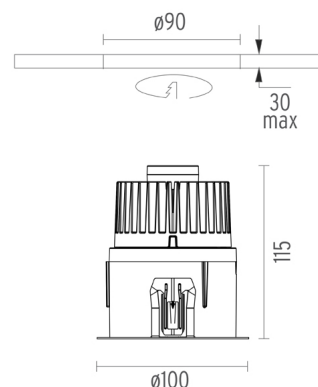
Ceiling protector accessory. Round



Light Sniper Fixed Round I-10V
designed by FLOS Architectural

High-performance embedded light fixture for LED light source. Remote 220-240V power supply included.

- 03.4632.06AIV - 138lm Chrome
- 03.4632.GLAIV - 138lm Gold
- 03.4632.14AIV - 138lm Matt black



CERTIFICATIONS



Light Sniper Fixed Round I-10V . Lamps



Phosphor LED

Lamp category:
LED

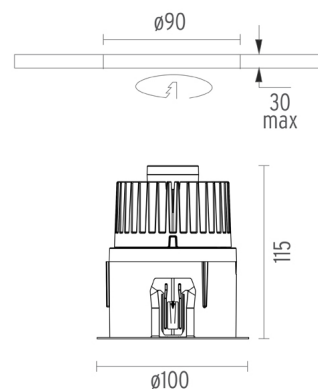
Lamp type:
Phosphor LED



Light Sniper Fixed Round I-10V designed by FLOS Architectural

High-performance embedded light fixture for LED light source. Remote 220-240V power supply included.

- 03.4632.06AIV - 138lm Chrome
- 03.4632.GLAIV - 138lm Gold
- 03.4632.14AIV - 138lm Matt black



CERTIFICATIONS

