

LIGHT SNIPER FIXED ROUND

Number of heads	1
Mounting	Ceiling recessed
Lamps description	Phosphor LED 9W 800 lm 3000K CRI 98
Luminaire luminous flux	Extreme Cut-off. See reference number
Voltage (V)	220/240
Environment	Indoor

OPTICAL

Light controller description	Bare lamps
Aiming	Fixed
Light distribution symmetry	Symmetric
Beam angle	23°

ELECTRICAL

Transformer availability	Included
Transformer mounting	Remote
Transformer type	Electronic
Emergency	Without
Insulation class	Class II

PHYSICAL

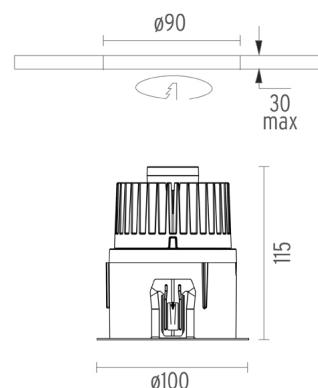
Cutout diameter (mm)	90
Diameter (mm)	100
Recessed depth (mm)	115
Construction material	Aluminium
Weight (kg)	0,51



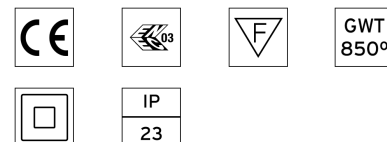
Light Sniper Fixed Round
designed by FLOS Architectural

High-performance embedded light fixture for LED light source. Remote 220-240V power supply included.

	03.4632.06A - 138lm	Chrome
	03.4632.GLA - 138lm	Gold
	03.4632.14A - 138lm	Matt black



CERTIFICATIONS



Light Sniper Fixed Round . Accessories

Mounting



08.8239.00B

**Flush ceiling round
frame accessory**

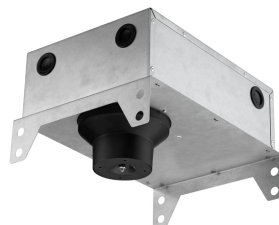


08.8243.00

08.8243.00.5U

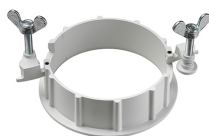
08.8243.00.1U

**Ceiling protector
accessory.**



08.8250.00

**Concrete instalation
can.**



08.8229.30A

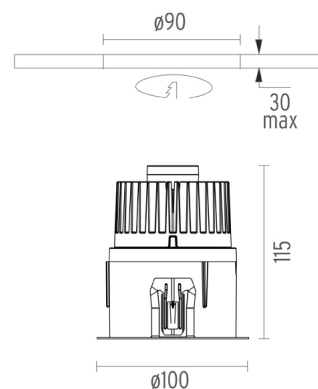
**Ceiling protector
accessory. Round**



Light Sniper Fixed Round
designed by FLOS Architectural

High-performance embedded light
fixture for LED light source. Remote
220-240V power supply included.

03.4632.06A - 138lm	Chrome
03.4632.GLA - 138lm	Gold
03.4632.14A - 138lm	Matt black



CERTIFICATIONS



Light Sniper Fixed Round . Lamps



Phosphor LED

Lamp category:
LED

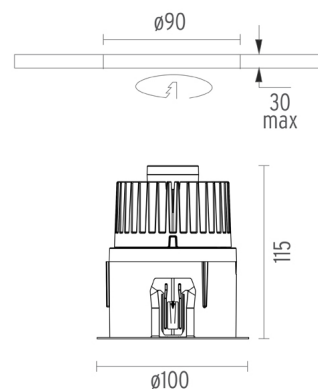
Lamp type:
Phosphor LED



Light Sniper Fixed Round designed by FLOS Architectural

High-performance embedded light fixture for LED light source. Remote 220-240V power supply included.

	03.4632.06A - 138lm	Chrome
	03.4632.GLA - 138lm	Gold
	03.4632.14A - 138lm	Matt black



CERTIFICATIONS

