

LIGHT SNIPER FIXED SQUARE

Number of heads	1
Mounting	Ceiling recessed
Lamps description	HI PAR 51 GX10 Max 35W
Voltage (V)	220/240
Environment	Indoor

OPTICAL

Light controller description	Bare lamps
Aiming	Fixed
Light distribution symmetry	Symmetric
Beam angle	29°

ELECTRICAL

Control gear availability	Separate item
Control gear type	Conventional, Electronic
Control gear mounting	Remote
Emergency	Without
Insulation class	Class I



PHYSICAL

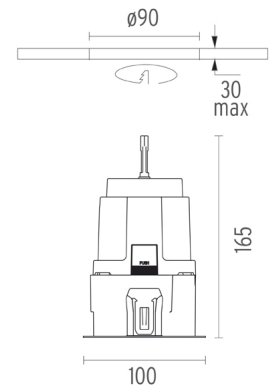
Cutout diameter (mm)	90
Length (mm)	100
Width (mm)	100
Recessed depth (mm)	165
Construction material	Aluminium
Weight (kg)	0,51



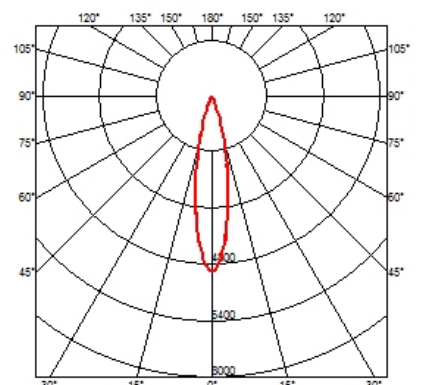
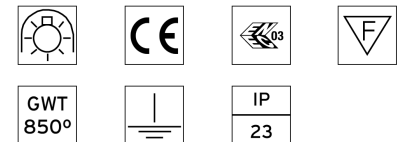
Light Sniper Fixed Square
designed by FLOS Architectural

High performance metal halide lamp recessed downlight. Remote ballast not included

	03.4606.06	Chrome
	03.4606.GL	Gold
	03.4606.14	Matt black

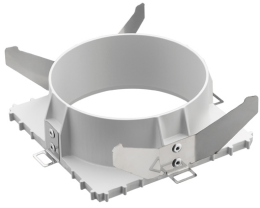


CERTIFICATIONS



Light Sniper Fixed Square . Accessories

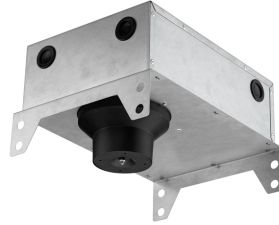
Mounting



○ 08.8240.00B
Flush ceiling square frame accessory



08.8243.00
08.8243.00.5U
08.8243.00.1U
Ceiling protector accessory.



08.8250.00
Concrete installation can.



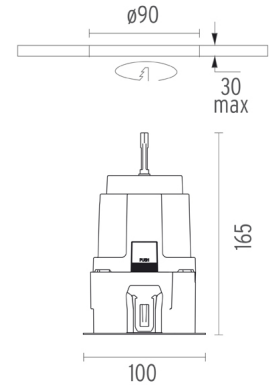
Light Sniper Fixed Square
designed by FLOS Architectural

High performance metal halide lamp recessed downlight. Remote ballast not included

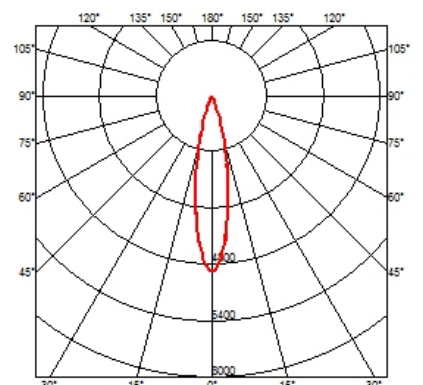
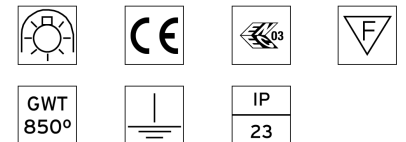
- 03.4606.06 Chrome
- 03.4606.GL Gold
- 03.4606.14 Matt black



○ 08.8222.30A
Ceiling protector accessory. Square



CERTIFICATIONS



Light Sniper Fixed Square . Lamps



60.6576
HI PAR 51
Lamp Watt:
 20 W
Lamp category:
 Metal halide
Socket:
 GX10
Lamp angle:
 10 °
Color temperature (K):
 3000 °K
Catalog reference:
 60.6576
Lamp type:
 HI PAR 51



60.6577
HI PAR 51
Lamp Watt:
 20 W
Lamp category:
 Metal halide
Socket:
 GX10
Lamp angle:
 25 °
Color temperature (K):
 3000 °K
Catalog reference:
 60.6577
Lamp type:
 HI PAR 51



60.6578
HI PAR 51
Lamp Watt:
 20 W
Lamp category:
 Metal halide
Socket:
 GX10
Lamp angle:
 40 °
Color temperature (K):
 3000 °K
Catalog reference:
 60.6578
Lamp type:
 HI PAR 51



60.6637
HI PAR 51
Lamp Watt:
 35 W
Lamp category:
 Metal halide
Socket:
 GX10
Lamp angle:
 25 °
Color temperature (K):
 3000 °K
Catalog reference:
 60.6637
Lamp type:
 HI PAR 51



60.6638
HI PAR 51
Lamp Watt:
 35 W
Lamp category:
 Metal halide
Socket:
 GX10
Lamp angle:
 40 °
Color temperature (K):
 3000 °K
Catalog reference:
 60.6638
Lamp type:
 HI PAR 51



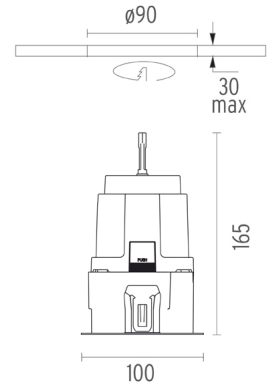
60.6636
HI PAR 51
Lamp Watt:
 35 W
Lamp category:
 Metal halide
Socket:
 GX10
Lamp angle:
 10 °
Color temperature (K):
 3000 °K
Catalog reference:
 60.6636
Lamp type:
 HI PAR 51



Light Sniper Fixed Square
 designed by FLOS Architectural

High performance metal halide lamp
 recessed downlight. Remote ballast
 not included

- 03.4606.06 Chrome
- 03.4606.GL Gold
- 03.4606.14 Matt black



CERTIFICATIONS

