

LIGHT SNIPER FIXED ROUND

Number of heads	1
Mounting	Ceiling recessed
Lamps description	HI PAR 51 GX10 Max 35W
Voltage (V)	220/240
Environment	Indoor

OPTICAL

Light controller description	Bare lamps
Aiming	Fixed
Light distribution symmetry	Symmetric
Beam angle	29°

ELECTRICAL

Control gear availability	Separate item
Control gear type	Conventional, Electronic
Control gear mounting	Remote
Emergency	Without
Insulation class	Class I




PHYSICAL

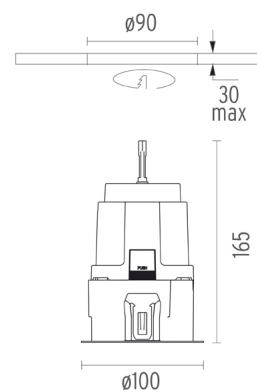
Cutout diameter (mm)	90
Diameter (mm)	100
Recessed depth (mm)	165
Construction material	Aluminium
Weight (kg)	0,51



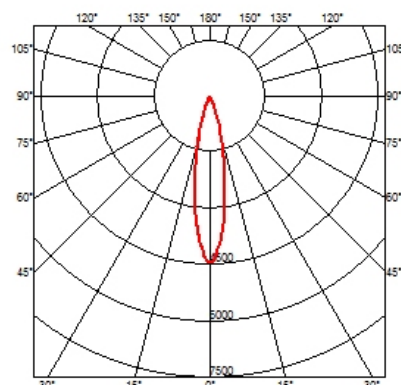
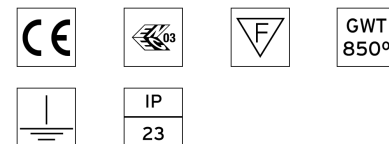
Light Sniper Fixed Round
designed by FLOS Architectural

High performance metal halide lamp recessed downlight. Remote ballast not included

	03.4605.06	Chrome
	03.4605.GL	Gold
	03.4605.14	Matt black



CERTIFICATIONS



Light Sniper Fixed Round . Accessories

Mounting



08.8239.00B

Flush ceiling round frame accessory

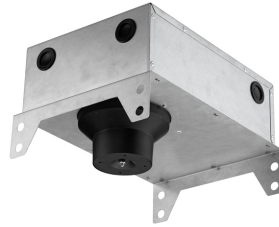


08.8243.00

08.8243.00.5U

08.8243.00.1U

Ceiling protector accessory.



08.8250.00

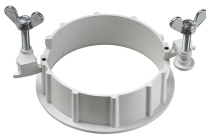
Concrete installation can.



Light Sniper Fixed Round
designed by FLOS Architectural

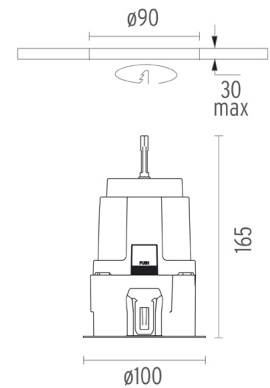
High performance metal halide lamp recessed downlight. Remote ballast not included

- 03.4605.06 Chrome
- 03.4605.GL Gold
- 03.4605.14 Matt black

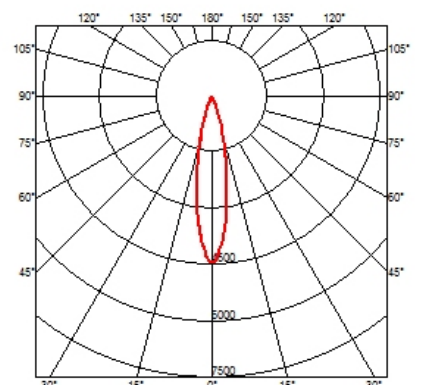
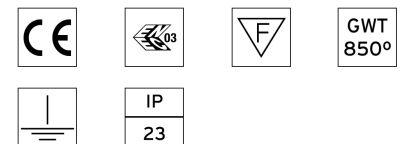


08.8229.30A

Ceiling protector accessory. Round



CERTIFICATIONS



Light Sniper Fixed Round . Lamps



60.6576

HI PAR 51

Lamp Watt:
20 W

Lamp category:
Metal halide

Socket:
GX10

Lamp angle:
10 °

Color temperature (K):
3000 °K

Catalog reference:
60.6576

Lamp type:
HI PAR 51



60.6577

HI PAR 51

Lamp Watt:
20 W

Lamp category:
Metal halide

Socket:
GX10

Lamp angle:
25 °

Color temperature (K):
3000 °K

Catalog reference:
60.6577

Lamp type:
HI PAR 51



60.6578

HI PAR 51

Lamp Watt:
20 W

Lamp category:
Metal halide

Socket:
GX10

Lamp angle:
40 °

Color temperature (K):
3000 °K

Catalog reference:
60.6578

Lamp type:
HI PAR 51



60.6637

HI PAR 51

Lamp Watt:
35 W

Lamp category:
Metal halide

Socket:
GX10

Lamp angle:
25 °

Color temperature (K):
3000 °K

Catalog reference:
60.6637

Lamp type:
HI PAR 51



60.6638

HI PAR 51

Lamp Watt:
35 W

Lamp category:
Metal halide

Socket:
GX10

Lamp angle:
40 °

Color temperature (K):
3000 °K

Catalog reference:
60.6638

Lamp type:
HI PAR 51



60.6636

HI PAR 51

Lamp Watt:
35 W

Lamp category:
Metal halide

Socket:
GX10

Lamp angle:
10 °

Color temperature (K):
3000 °K

Catalog reference:
60.6636

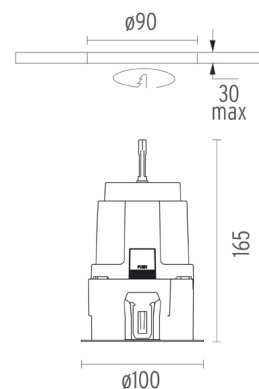
Lamp type:
HI PAR 51



Light Sniper Fixed Round
designed by FLOS Architectural

High performance metal halide lamp
recessed downlight. Remote ballast
not included

- 03.4605.06 Chrome
- 03.4605.GL Gold
- 03.4605.14 Matt black



CERTIFICATIONS

