

KAP 105 SQUARE DALI

| | |
|--------------------------------|---|
| Number of heads | 1 |
| Mounting | Ceiling recessed |
| Lamps description | Phosphor LED 17W 1400 lm 2700K CRI 98 |
| Luminaire luminous flux | Extreme Cut-off. See reference number |
| Environment | Indoor |
| Notes | Pre-installation frame. To be ordered separately. |

OPTICAL

| | |
|------------------------------------|-----------|
| Aiming | Fixed |
| Light distribution symmetry | Symmetric |
| Beam angle | 45° |

ELECTRICAL

| | |
|---------------------------------|--------------------------|
| Transformer availability | Included |
| Transformer mounting | Remote |
| Transformer type | Electronic dimmable dali |
| Emergency | Without |
| Insulation class | Class II |

PHYSICAL

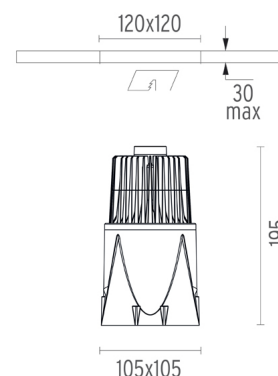
| | |
|------------------------------|-------------------|
| Cutout length (mm) | 120 |
| Cutout width (mm) | 120 |
| Recessed depth (mm) | 195 |
| Construction material | Die-cast aluminum |
| Weight (kg) | 0,84 |



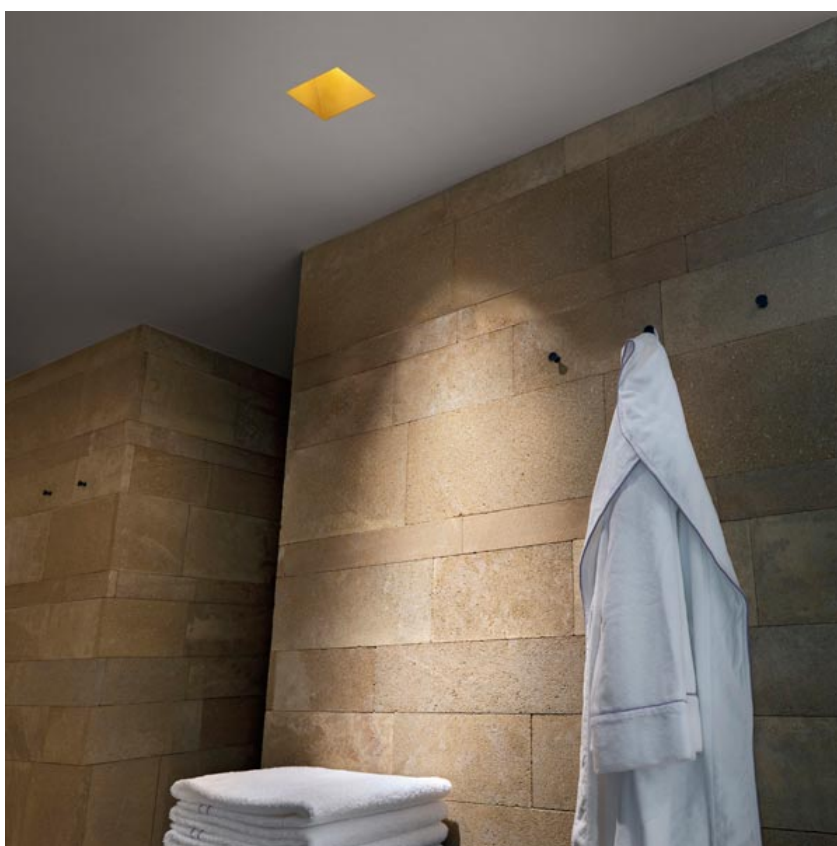
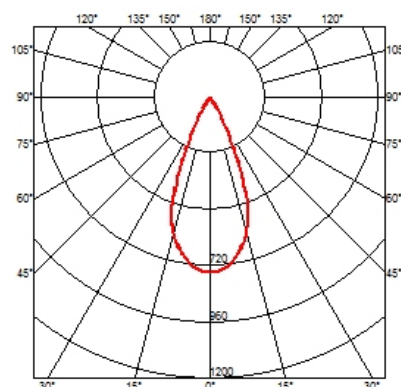
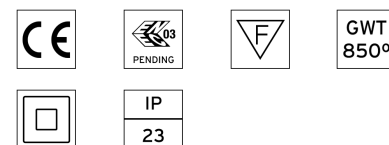
Kap 105 Square Dali
designed by FLOS Architectural

Recessed luminaire with LED light source. Remote electronic transformer 220/240V included.

- 03.4595.B1CDA - 592lm White
- 03.4595.GLCDA - 581lm Gold
- 03.4595.BUCDA - 388lm Blue
- 03.4595.74CDA - 410lm Black
- 03.4595.CUCDA - 585lm Copper

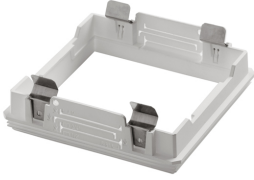


CERTIFICATIONS



Kap I05 Square Dali . Accessories

Mounting



○ 08.8479.00

Installation frame No Trim



Kap I05 Square Dali
designed by FLOS Architectural

Recessed luminaire with LED light source. Remote electronic transformer 220/240V included.

- 03.4595.BICDA - 592lm White
- 03.4595.GLCDA - 581lm Gold
- 03.4595.BUCDA - 388lm Blue
- 03.4595.74CDA - 410lm Black
- 03.4595.CUCDA - 585lm Copper

Kap I05 Square Dali . Lamps



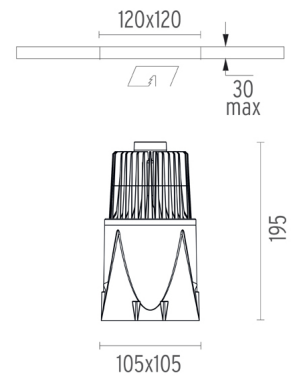
Phosphor LED

Lamp category:

LED

Lamp type:

Phosphor LED



CERTIFICATIONS

