

KAP Ø145 WALL-WASHER

Number of heads	1
Mounting	Ceiling recessed
Lamps description	LED Array 17W 2000 lm 3000K CRI 90
Luminaire luminous flux	Extreme Cut-off. See reference number
Environment	Indoor
Notes	Pre-installation frame. To be ordered separately.

OPTICAL

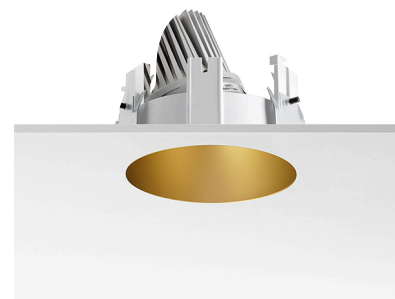
Aiming	Fixed
Light distribution symmetry	Asymmetric
Beam angle	56°

ELECTRICAL

Transformer availability	Included
Transformer mounting	Remote
Transformer type	Electronic
Emergency	Without
Insulation class	Class II

PHYSICAL

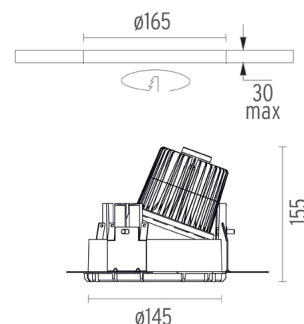
Cutout diameter (mm)	165
Diameter (mm)	145
Recessed depth (mm)	155
Construction material	Die-cast aluminum
Weight (kg)	0,94



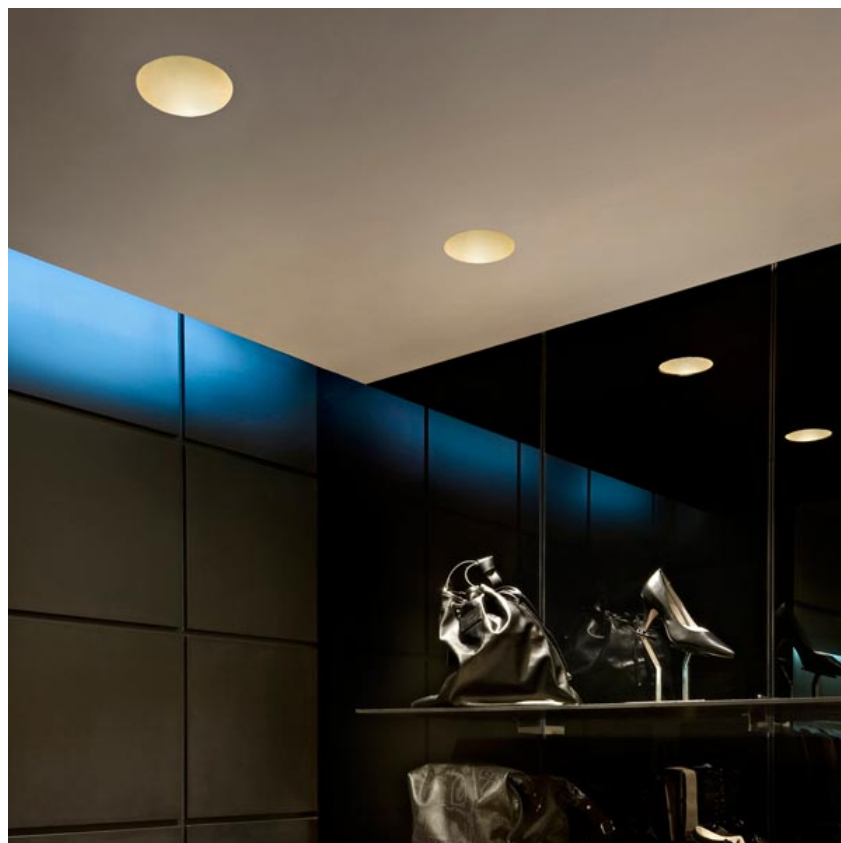
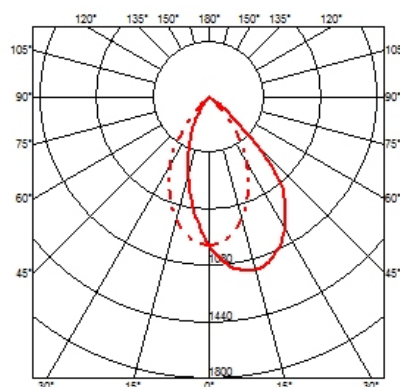
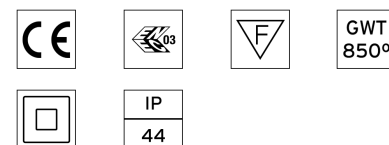
Kap Ø145 Wall-Washer
designed by FLOS Architectural

Recessed luminaire with LED light source. Remote electronic transformer 220/240V included.

03.4588.BI - 1246lm	White
03.4588.GL - 1185lm	Gold
03.4588.BU - 1026lm	Blue
03.4588.74 - 1047lm	Black
03.4588.CU - 1170lm	Copper

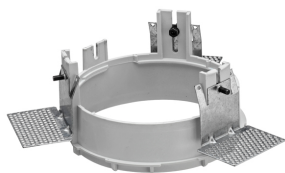


CERTIFICATIONS



Kap Ø145 Wall-Washer . Accessories

Mounting



○ 08.8251.00

Installation Frame No Trim

○ 08.8491.30

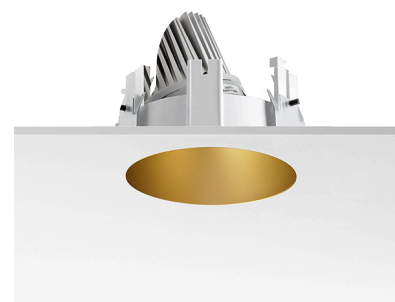
● 08.8491.GL

● 08.8491.BU

● 08.8491.14

Installation Frame Trim

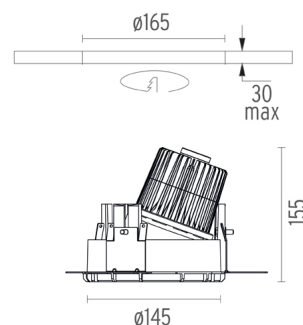
Installation frame Kap Ø145/
Kap Ø145 wall washer.
Copper finish trim frame not
available. Combine with
with or any of the other
finishes according to the
desired final aesthetic effect.



Kap Ø145 Wall-Washer
designed by FLOS Architectural

Recessed luminaire with LED light
source. Remote electronic
transformer 220/240V included.

○ 03.4588.B1 - 1246lm	White
● 03.4588.GL - 1185lm	Gold
● 03.4588.BU - 1026lm	Blue
● 03.4588.74 - 1047lm	Black
● 03.4588.CU - 1170lm	Copper



Kap Ø145 Wall-Washer . Lamps



LED Array

Lamp category:
LED

Socket:
Special base

Lamp type:
LED Array

CERTIFICATIONS

