

## KAP Ø145 DEEP

Number of heads	1
Mounting	Ceiling recessed
Lamps description	LED Array 17W 1800 lm 2700K CRI 90
Luminaire luminous flux	Extreme Cut-off. See reference number
Environment	Indoor
Notes	Pre-installation frame. To be ordered separately.

### OPTICAL

Aiming	Fixed
Light distribution symmetry	Symmetric
Beam angle	34°

### ELECTRICAL

Transformer availability	Included
Transformer mounting	Remote
Transformer type	Electronic
Emergency	Without
Insulation class	Class II

### PHYSICAL

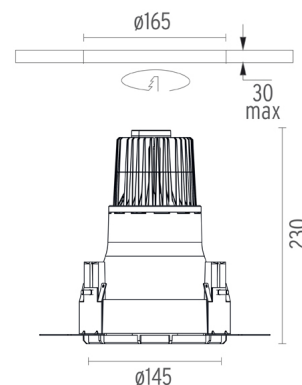
Cutout diameter (mm)	165
Diameter (mm)	145
Recessed depth (mm)	230
Construction material	Die-cast aluminum
Weight (kg)	0,99



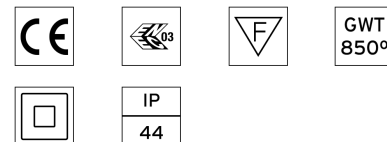
**Kap Ø145 Deep**  
designed by FLOS Architectural

Recessed luminaire with LED light source. Remote electronic transformer 220/240V included.

● 03.4587.BI - 936lm	White
● 03.4587.GL - 923lm	Gold
● 03.4587.BU - 573lm	Blue
● 03.4587.74 - 615lm	Black
● 03.4587.CU - 842lm	Copper

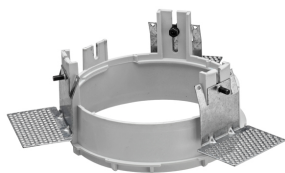


### CERTIFICATIONS



## Kap Ø145 Deep . Accessories

### Mounting



08.8156.00

**Installation Frame No Trim**



08.8421.00

**Installation can for concrete KAP Ø145**



08.8491.30

08.8491.GL

08.8491.BU

08.8491.14

### Installation Frame Trim

Installation frame Kap Ø145/ Kap Ø145 wall washer. Copper finish trim frame not available. Combine with white or any of the other finishes according to the desired final aesthetic effect.

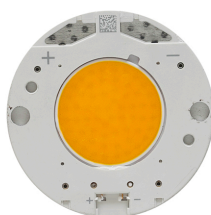


**Kap Ø145 Deep**  
designed by FLOS Architectural

Recessed luminaire with LED light source. Remote electronic transformer 220/240V included.

03.4587.B1 - 936lm	White
03.4587.GL - 923lm	Gold
03.4587.BU - 573lm	Blue
03.4587.74 - 615lm	Black
03.4587.CU - 842lm	Copper

## Kap Ø145 Deep . Lamps



### LED Array

#### Lamp category:

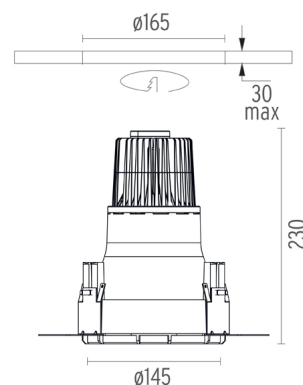
LED

#### Socket:

Special base

#### Lamp type:

LED Array



### CERTIFICATIONS

