

KAP Ø145

Number of heads	1
Mounting	Ceiling recessed
Lamps description	LED Array 17W 1800 lm 2700K CRI 90
Luminaire luminous flux	Extreme Cut-off. See reference number
Environment	Indoor
Notes	Pre-installation frame. To be ordered separately.

OPTICAL

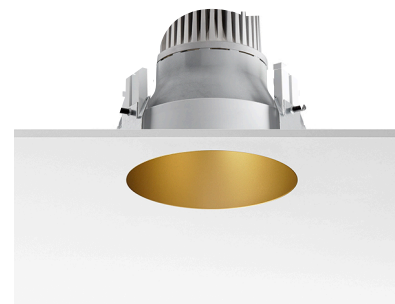
Aiming	Fixed
Light distribution symmetry	Symmetric
Beam angle	49°

ELECTRICAL

Transformer availability	Included
Transformer mounting	Remote
Transformer type	Electronic
Emergency	Without
Insulation class	Class II

PHYSICAL

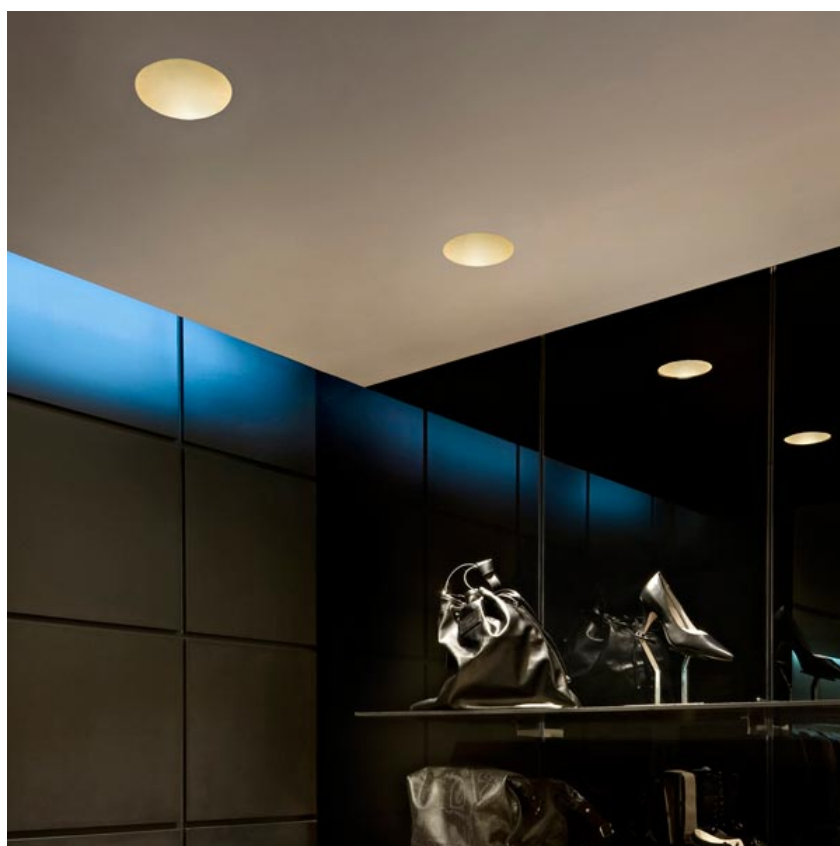
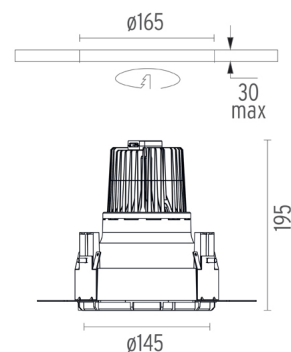
Cutout diameter (mm)	165
Diameter (mm)	145
Recessed depth (mm)	195
Construction material	Die-cast aluminum
Weight (kg)	0,88



Kap Ø145
designed by FLOS Architectural

Recessed luminaire with LED light source. Remote electronic transformer 220/240V included.

● 03.4585.B1 - 1110lm	White
● 03.4585.GL - 1059lm	Gold
● 03.4585.BU - 791lm	Blue
● 03.4585.74 - 815lm	Black
● 03.4585.CU - 977lm	Copper

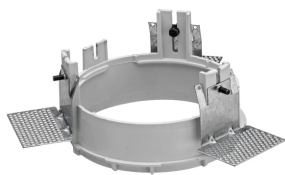


CERTIFICATIONS



Kap Ø145 . Accessories

Mounting



08.8156.00

Installation Frame No Trim



08.8421.00

Installation can for concrete KAP Ø145



08.8491.30

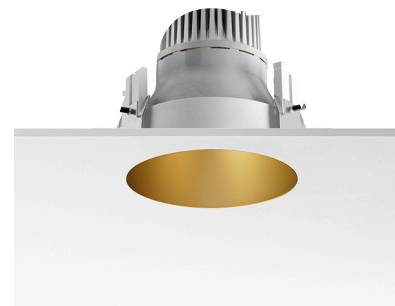
08.8491.GL

08.8491.BU

08.8491.14

Installation Frame Trim

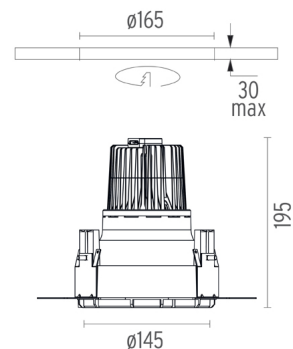
Installation frame Kap Ø145/ Kap Ø145 wall washer. Copper finish trim frame not available. Combine with withe or any of the other finishes according to the desired final aesthetic effect.



Kap Ø145
designed by FLOS Architectural

Recessed luminaire with LED light source. Remote electronic transformer 220/240V included.

03.4585.B1 - 1110lm	White
03.4585.GL - 1059lm	Gold
03.4585.BU - 791lm	Blue
03.4585.74 - 815lm	Black
03.4585.CU - 977lm	Copper



Kap Ø145 . Lamps



LED Array

Lamp category:

LED

Socket:

Special base

Lamp type:

LED Array

CERTIFICATIONS

