

KAP Ø145 DALI

Number of heads	1
Mounting	Ceiling recessed
Lamps description	LED Array 17W 1800 lm 2700K CRI 90
Luminaire luminous flux	Extreme Cut-off. See reference number
Environment	Indoor
Notes	Pre-installation frame. To be ordered separately.

OPTICAL

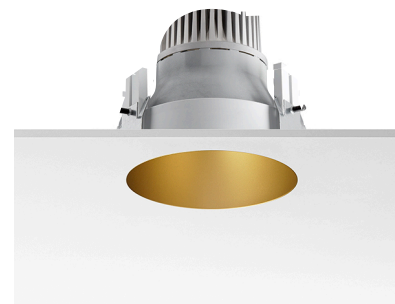
Aiming	Fixed
Light distribution symmetry	Symmetric
Beam angle	49°

ELECTRICAL

Transformer availability	Included
Transformer mounting	Remote
Transformer type	Electronic dimmable dali
Emergency	Without
Insulation class	Class II

PHYSICAL

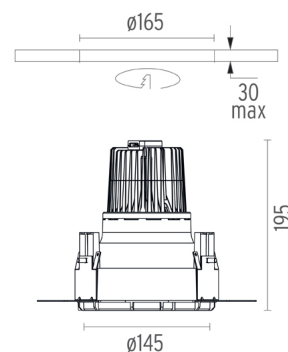
Cutout diameter (mm)	165
Diameter (mm)	145
Recessed depth (mm)	195
Construction material	Die-cast aluminum
Weight (kg)	0,88



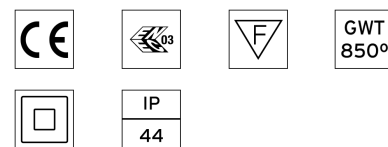
Kap Ø145 Dali
designed by FLOS Architectural

Recessed luminaire with LED light source. Remote electronic transformer 220/240V included.

- 03.4585.B1.DA - 1110lm White
- 03.4585.GL.DA - 1059lm Gold
- 03.4585.BU.DA - 791lm Blue
- 03.4585.74.DA - 815lm Black
- 03.4585.CU.DA - 977lm Copper

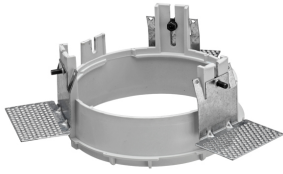


CERTIFICATIONS



Kap Ø145 Dali . Accessories

Mounting



08.8156.00

Installation Frame No Trim



08.8421.00

Installation can for concrete KAP Ø145



08.8491.30

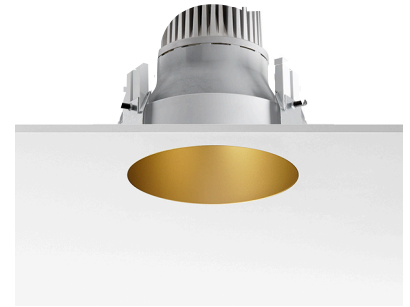
08.8491.GL

08.8491.BU

08.8491.14

Installation Frame Trim

Installation frame Kap Ø145/
Kap Ø145 wall washer.
Copper finish trim frame not available. Combine with white or any of the other finishes according to the desired final aesthetic effect.



Kap Ø145 Dali
designed by FLOS Architectural

Recessed luminaire with LED light source. Remote electronic transformer 220/240V included.

- 03.4585.BI.DA - 1110lm White
- 03.4585.GL.DA - 1059lm Gold
- 03.4585.BU.DA - 791lm Blue
- 03.4585.74.DA - 815lm Black
- 03.4585.CU.DA - 977lm Copper

Kap Ø145 Dali . Lamps



LED Array

Lamp category:

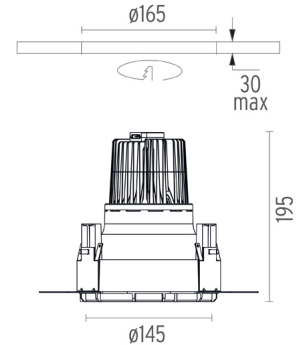
LED

Socket:

Special base

Lamp type:

LED Array



CERTIFICATIONS

