

KAP Ø145 I-10V

Number of heads	1
Mounting	Ceiling recessed
Lamps description	LED Array 17W 2000 lm 3000K CRI 90
Luminaire luminous flux	Extreme Cut-off. See reference number
Environment	Indoor
Notes	Pre-installation frame. To be ordered separately.

OPTICAL

Aiming	Fixed
Light distribution symmetry	Symmetric
Beam angle	49°

ELECTRICAL

Transformer availability	Included
Transformer mounting	Remote
Transformer type	Electronic dimmable I-10V
Emergency	Without
Insulation class	Class II

PHYSICAL

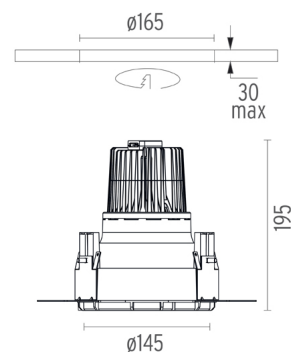
Cutout diameter (mm)	165
Diameter (mm)	145
Recessed depth (mm)	195
Construction material	Die-cast aluminum
Weight (kg)	0,88



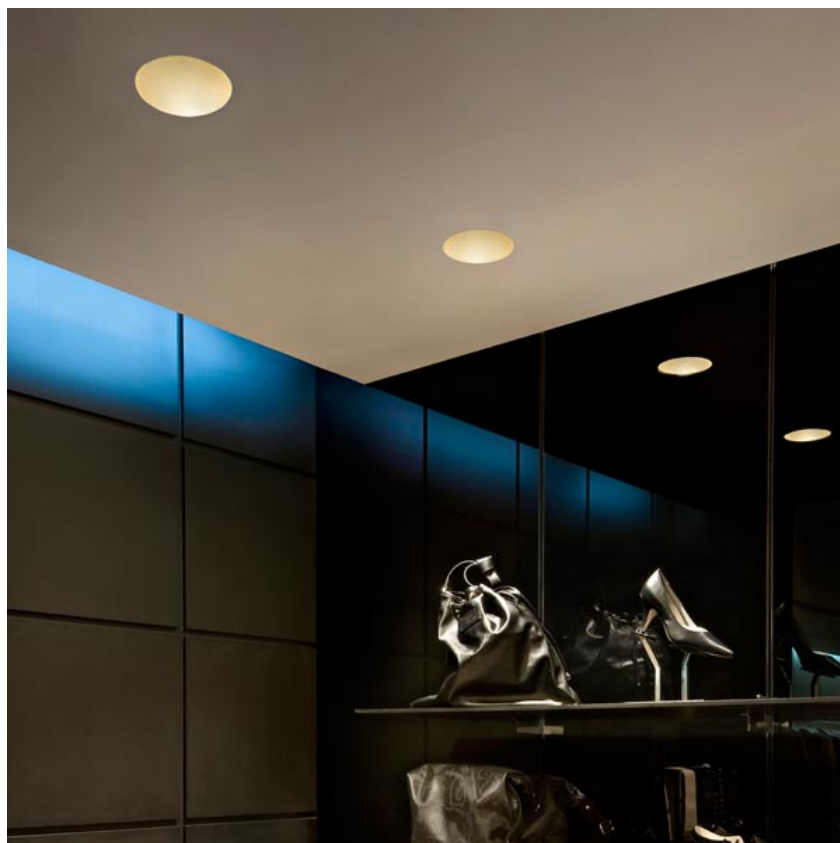
Kap Ø145 I-10V
designed by FLOS Architectural

Recessed luminaire with LED light source. Remote electronic transformer 220/240V included.

03.4584.BI.IV - 1163lm	White
03.4584.GL.IV - 1109lm	Gold
03.4584.BU.IV - 829lm	Blue
03.4584.74.IV - 854lm	Black
03.4584.CU.IV - 1023lm	Copper

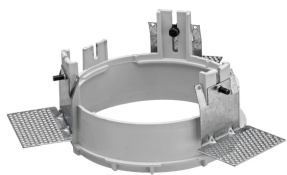


CERTIFICATIONS



Kap Ø145 I-10V . Accessories

Mounting



08.8156.00

Installation Frame No Trim



08.8421.00

Installation can for concrete KAP Ø145



08.8491.30

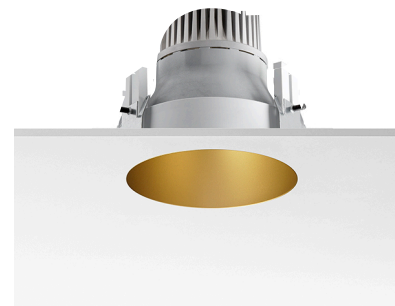
08.8491.GL

08.8491.BU

08.8491.14

Installation Frame Trim

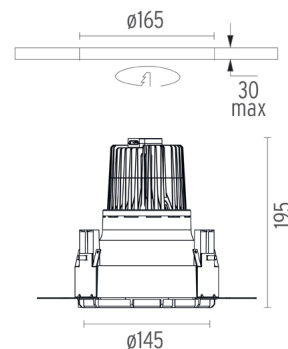
Installation frame Kap Ø145/ Kap Ø145 wall washer. Copper finish trim frame not available. Combine with withe or any of the other finishes according to the desired final aesthetic effect.



Kap Ø145 I-10V
designed by FLOS Architectural

Recessed luminaire with LED light source. Remote electronic transformer 220/240V included.

03.4584.BI.IV - 1163lm	White
03.4584.GL.IV - 1109lm	Gold
03.4584.BU.IV - 829lm	Blue
03.4584.74.IV - 854lm	Black
03.4584.CU.IV - 1023lm	Copper



Kap Ø145 I-10V . Lamps



LED Array

Lamp category:

LED

Socket:

Special base

Lamp type:

LED Array

CERTIFICATIONS

