

KAP 105 SQUARE DALI

Number of heads	1
Mounting	Ceiling recessed
Lamps description	LED Array 17W 1800 lm 2700K CRI 90
Luminaire luminous flux	Extreme Cut-off. See reference number
Environment	Indoor
Notes	Pre-installation frame. To be ordered separately.

OPTICAL

Aiming	Fixed
Light distribution symmetry	Symmetric
Beam angle	40°

ELECTRICAL

Transformer availability	Included
Transformer mounting	Remote
Transformer type	Electronic dimmable dali
Emergency	Without
Insulation class	Class II

PHYSICAL

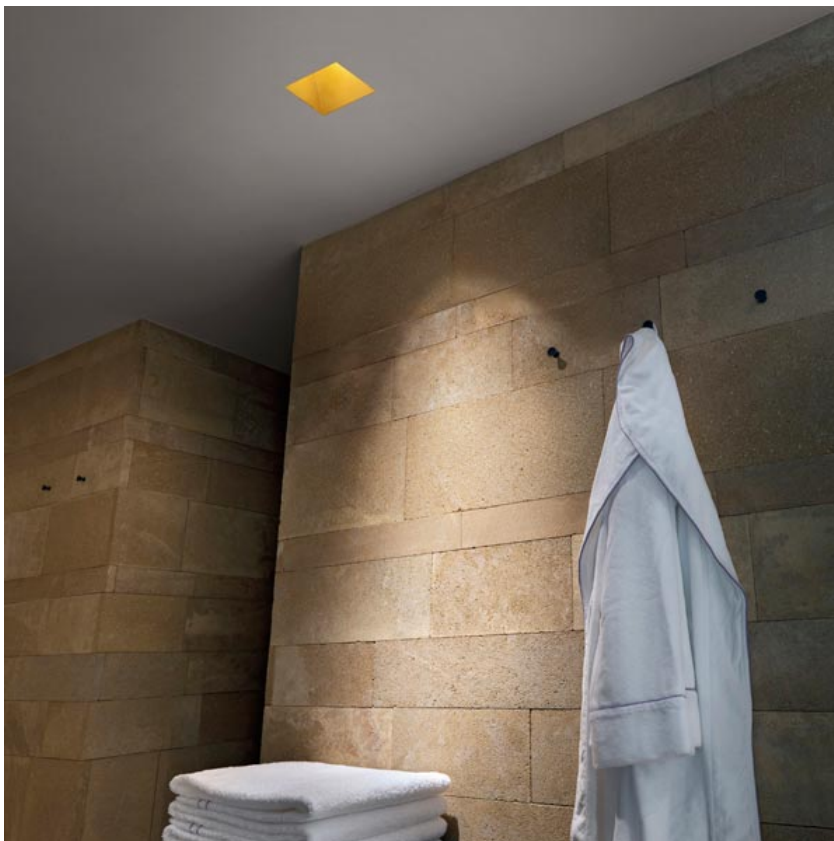
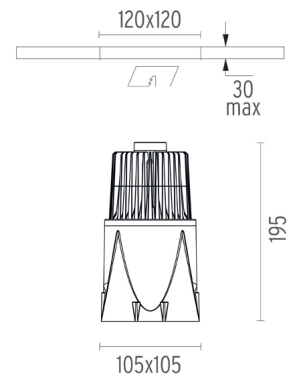
Cutout length (mm)	120
Cutout width (mm)	120
Recessed depth (mm)	195
Construction material	Die-cast aluminum
Weight (kg)	0,84



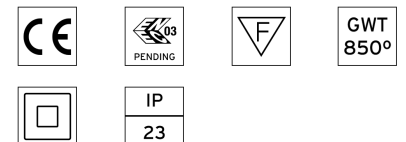
Kap 105 Square Dali
designed by FLOS Architectural

Recessed luminaire with LED light source. Remote electronic transformer 220/240V included.

●	03.4583.BI.DA - 946lm	White
●	03.4583.GL.DA - 921lm	Gold
●	03.4583.BU.DA - 708lm	Blue
●	03.4583.74.DA - 703lm	Black
●	03.4583.CU.DA - 882lm	Copper

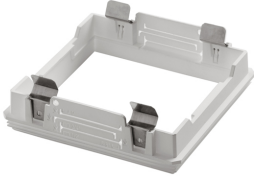


CERTIFICATIONS



Kap I05 Square Dali . Accessories

Mounting



○ 08.8479.00

Installation frame No Trim

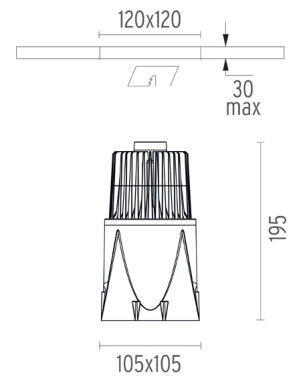


Kap I05 Square Dali
designed by FLOS Architectural

Recessed luminaire with LED light source. Remote electronic transformer 220/240V included.

- 03.4583.BI.DA - 946lm White
- 03.4583.GL.DA - 921lm Gold
- 03.4583.BU.DA - 708lm Blue
- 03.4583.74.DA - 703lm Black
- 03.4583.CU.DA - 882lm Copper

Kap I05 Square Dali . Lamps



LED Array

Lamp category:

LED

Socket:

Special base

Lamp type:

LED Array

CERTIFICATIONS

