

KAP 105 SQUARE I-10V

| | |
|-------------------------|---|
| Number of heads | 1 |
| Mounting | Ceiling recessed |
| Lamps description | LED Array 17W 1800 lm 2700K CRI 90 |
| Luminaire luminous flux | Extreme Cut-off. See reference number |
| Environment | Indoor |
| Notes | Pre-installation frame. To be ordered separately. |

OPTICAL

| | |
|-----------------------------|-----------|
| Aiming | Fixed |
| Light distribution symmetry | Symmetric |
| Beam angle | 40° |

ELECTRICAL

| | |
|--------------------------|---------------------------|
| Transformer availability | Included |
| Transformer mounting | Remote |
| Transformer type | Electronic dimmable I-10V |
| Emergency | Without |
| Insulation class | Class II |

PHYSICAL

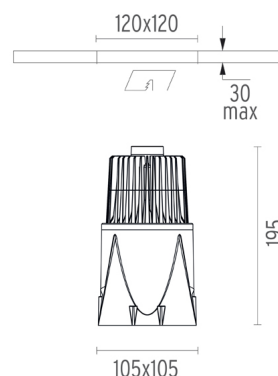
| | |
|-----------------------|-------------------|
| Cutout length (mm) | 120 |
| Cutout width (mm) | 120 |
| Recessed depth (mm) | 195 |
| Construction material | Die-cast aluminum |
| Weight (kg) | 0,84 |



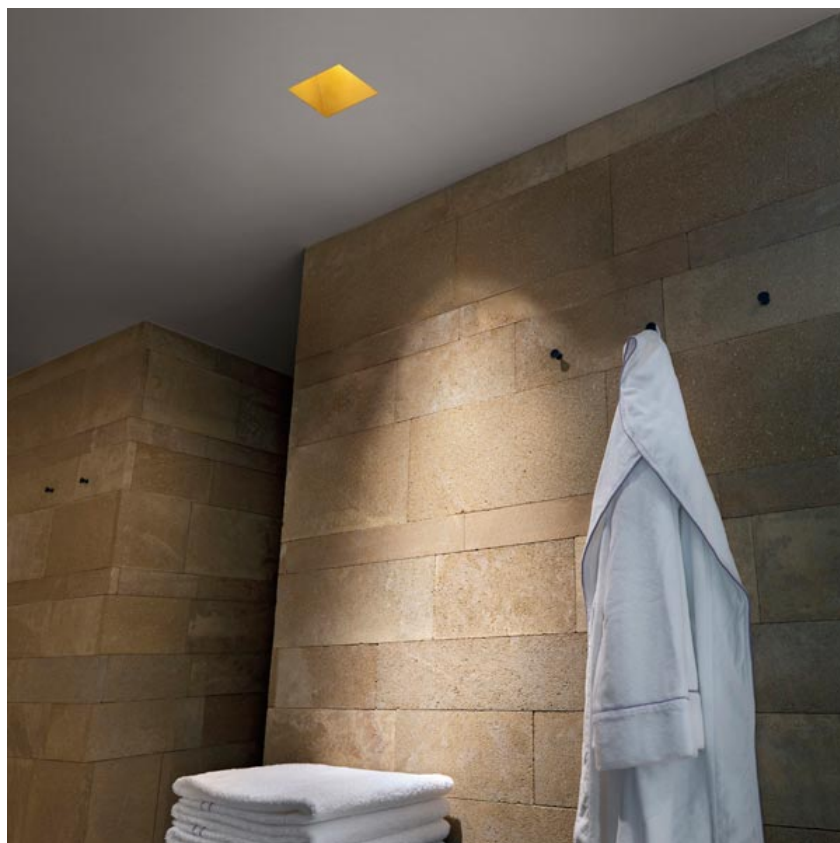
Kap 105 Square I-10V
designed by FLOS Architectural

Recessed luminaire with LED light source. Remote electronic transformer 220/240V included.

| | |
|-----------------------|--------|
| 03.4583.BI.IV - 946lm | White |
| 03.4583.GL.IV - 921lm | Gold |
| 03.4583.BU.IV - 708lm | Blue |
| 03.4583.74.IV - 703lm | Black |
| 03.4583.CU.IV - 882lm | Copper |

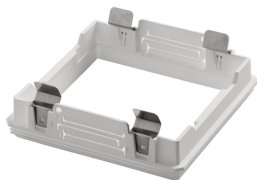


CERTIFICATIONS



Kap I05 Square I-10V . Accessories

Mounting



08.8479.00

Installation frame No Trim

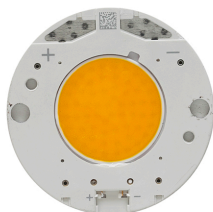


Kap I05 Square I-10V
designed by FLOS Architectural

Recessed luminaire with LED light source. Remote electronic transformer 220/240V included.

| | |
|-----------------------|--------|
| 03.4583.BI.IV - 946lm | White |
| 03.4583.GL.IV - 921lm | Gold |
| 03.4583.BU.IV - 708lm | Blue |
| 03.4583.74.IV - 703lm | Black |
| 03.4583.CU.IV - 882lm | Copper |

Kap I05 Square I-10V . Lamps



LED Array

Lamp category:

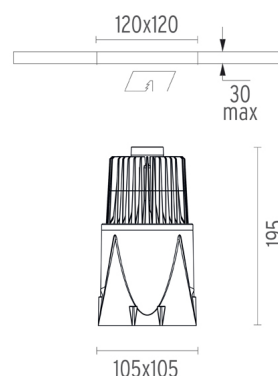
LED

Socket:

Special base

Lamp type:

LED Array



CERTIFICATIONS

