

KAP 105 SQUARE DALI

| | |
|--------------------------------|---|
| Number of heads | 1 |
| Mounting | Ceiling recessed |
| Lamps description | LED Array 17W 2000 lm 3000K CRI 90 |
| Luminaire luminous flux | Extreme Cut-off. See reference number |
| Environment | Indoor |
| Notes | Pre-installation frame. To be ordered separately. |

OPTICAL

| | |
|------------------------------------|-----------|
| Aiming | Fixed |
| Light distribution symmetry | Symmetric |
| Beam angle | 40° |

ELECTRICAL

| | |
|---------------------------------|--------------------------|
| Transformer availability | Included |
| Transformer mounting | Remote |
| Transformer type | Electronic dimmable dali |
| Emergency | Without |
| Insulation class | Class II |

PHYSICAL

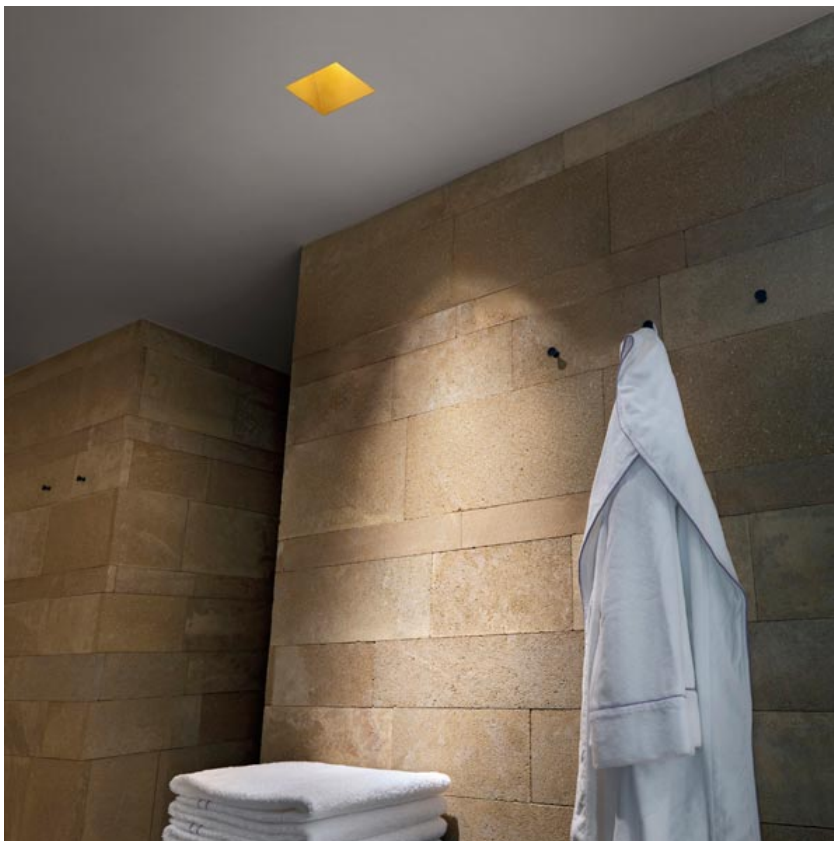
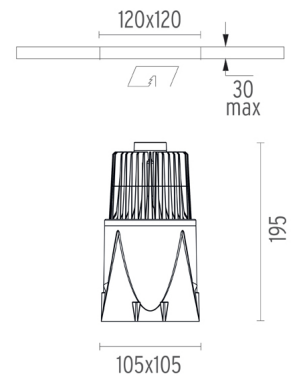
| | |
|------------------------------|-------------------|
| Cutout length (mm) | 120 |
| Cutout width (mm) | 120 |
| Recessed depth (mm) | 195 |
| Construction material | Die-cast aluminum |
| Weight (kg) | 0,84 |



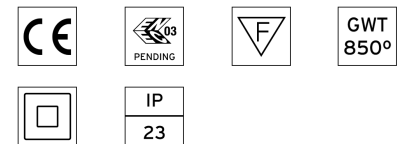
Kap 105 Square Dali
designed by FLOS Architectural

Recessed luminaire with LED light source. Remote electronic transformer 220/240V included.

| | | |
|---|-----------------------|--------|
| ● | 03.4582.B1.DA - 992lm | White |
| ● | 03.4582.GL.DA - 965lm | Gold |
| ● | 03.4582.BU.DA - 742lm | Blue |
| ● | 03.4582.74.DA - 736lm | Black |
| ● | 03.4582.CU.DA - 924lm | Copper |

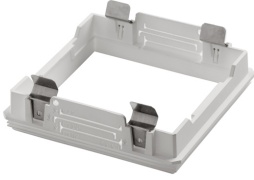


CERTIFICATIONS



Kap I05 Square Dali . Accessories

Mounting



○ 08.8479.00

Installation frame No Trim



Kap I05 Square Dali
designed by FLOS Architectural

Recessed luminaire with LED light source. Remote electronic transformer 220/240V included.

- 03.4582.BI.DA - 992lm White
- 03.4582.GL.DA - 965lm Gold
- 03.4582.BU.DA - 742lm Blue
- 03.4582.74.DA - 736lm Black
- 03.4582.CU.DA - 924lm Copper

Kap I05 Square Dali . Lamps



LED Array

Lamp category:

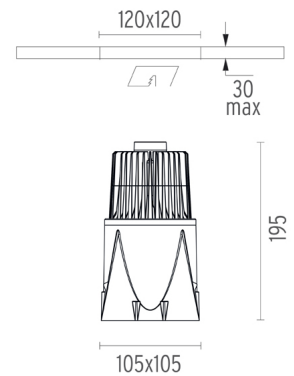
LED

Socket:

Special base

Lamp type:

LED Array



CERTIFICATIONS

