

KAP Ø105 I-10V

Number of heads	1
Mounting	Ceiling recessed
Lamps description	LED Array 13,5W 1600 lm 2700K CRI 90
Luminaire luminous flux	Extreme Cut-off. See reference number
Environment	Indoor
Notes	Conventional pre-installation frame and/or Fast&Perfect. To be ordered separately.

OPTICAL

Light controller description	Reflector
Aiming	Fixed
Light distribution symmetry	Symmetric
Beam angle	36°

ELECTRICAL

Transformer availability	Included
Transformer mounting	Remote
Transformer type	Electronic dimmable I-10V
Emergency	Without
Insulation class	Class II

PHYSICAL

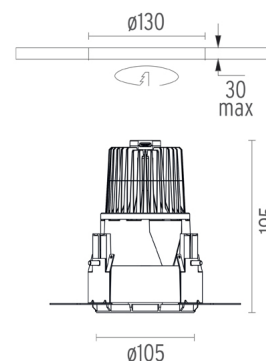
Cutout diameter (mm)	130
Diameter (mm)	105
Recessed depth (mm)	195
Construction material	Die-cast aluminum
Weight (kg)	0,83



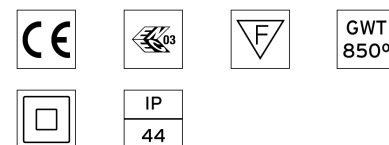
Kap Ø105 I-10V
designed by FLOS Architectural

Recessed luminaire with LED light source. Remote electronic transformer 220/240V included.

●	03.4581.BI.IV - 753lm	White
●	03.4581.GL.IV - 746lm	Gold
●	03.4581.BU.IV - 477lm	Blue
●	03.4581.74.IV - 479lm	Black
●	03.4581.CU.IV - 662lm	Copper

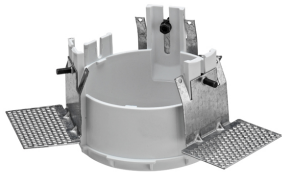


CERTIFICATIONS



Kap Ø105 I-10V . Accessories

Mounting



○ 08.8155.00

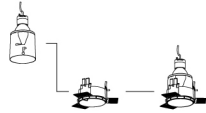
Installation frame No Trim

TO BE COMPLETED WITH:
INSTALLATION FRAME.
AVAILABLE AS ACCESSORY ELEMENT.
MUST BE ORDERED SEPARATELY.

Ø105
□ 08.8155.00



Example
03.4400.B1 + 08.8155.00



HOW TO ORDER



○ 08.8420.00

Installation can for concrete KAP Ø105



Kap Ø105 I-10V
designed by FLOS Architectural

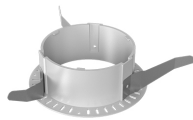
Recessed luminaire with LED light source. Remote electronic transformer 220/240V included.

- 03.4581.BI.IV - 753lm White
- 03.4581.GL.IV - 746lm Gold
- 03.4581.BU.IV - 477lm Blue
- 03.4581.74.IV - 479lm Black
- 03.4581.CU.IV - 662lm Copper



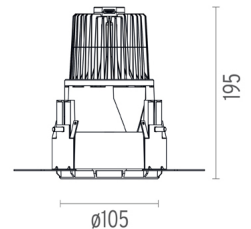
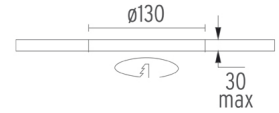
○ 08.9101.00

Fast&Perfect tool ø153



● 08.9104.00

Installation frame No Trim



CERTIFICATIONS



Kap Ø105 I-10V . Lamps



LED Array

Lamp category:
LED

Socket:
Special base

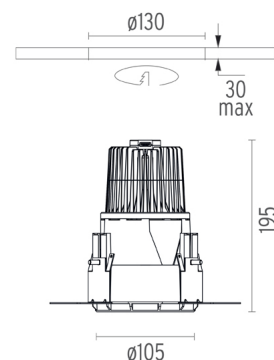
Lamp type:
LED Array



Kap Ø105 I-10V
designed by FLOS Architectural

Recessed luminaire with LED light source. Remote electronic transformer 220/240V included.

- 03.4581.BI.IV - 753lm White
- 03.4581.GL.IV - 746lm Gold
- 03.4581.BU.IV - 477lm Blue
- 03.4581.74.IV - 479lm Black
- 03.4581.CU.IV - 662lm Copper



CERTIFICATIONS

