

KAP Ø105 DALI

Number of heads	1
Mounting	Ceiling recessed
Lamps description	Phosphor LED 15,6W 1300 lm 2700K CRI 98
Luminaire luminous flux	Extreme Cut-off. See reference number
Environment	Indoor
Notes	Conventional pre-installation frame and/or Fast&Perfect. To be ordered separately.

OPTICAL

Light controller description	Reflector
Aiming	Fixed
Light distribution symmetry	Symmetric
Beam angle	37°

ELECTRICAL

Transformer availability	Included
Transformer mounting	Remote
Transformer type	Electronic dimmable dali
Emergency	Without
Insulation class	Class II

PHYSICAL

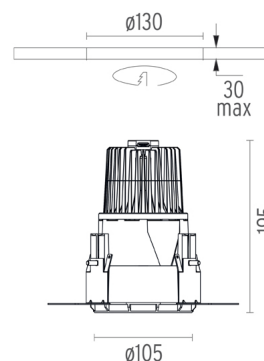
Cutout diameter (mm)	130
Diameter (mm)	105
Recessed depth (mm)	195
Construction material	Die-cast aluminum
Weight (kg)	0,83



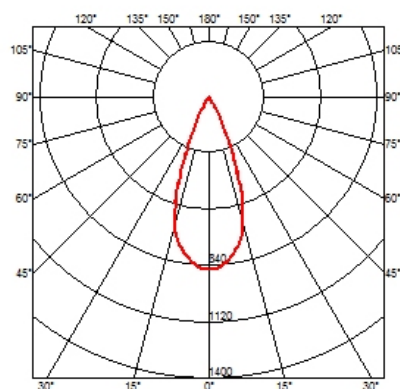
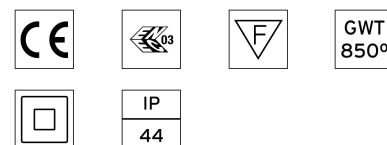
Kap Ø105 Dali
designed by FLOS Architectural

Recessed luminaire with LED light source. Remote electronic transformer 220/240V included.

●	03.4494.B1BDA - 617lm	White
●	03.4494.GLBDA - 634lm	Gold
●	03.4494.BUBDA - 341lm	Blue
●	03.4494.74BDA - 383lm	Black
●	03.4494.CUBDA - 730lm	Copper

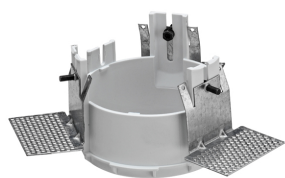


CERTIFICATIONS



Kap Ø105 Dali . Accessories

Mounting



08.8155.00

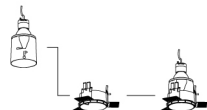
Installation frame No Trim

TO BE COMPLETED WITH:
INSTALLATION FRAME.
AVAILABLE AS ACCESSORY ELEMENT.
MUST BE ORDERED SEPARATELY.

Ø105
□ 08.8155.00



Example
03.4494.B1 + 08.8155.00



HOW TO ORDER



08.8420.00

Installation can for concrete KAP Ø105



Kap Ø105 Dali
designed by FLOS Architectural

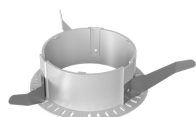
Recessed luminaire with LED light source. Remote electronic transformer 220/240V included.

- 03.4494.B1BDA - 617lm White
- 03.4494.GLBDA - 634lm Gold
- 03.4494.BUBDA - 341lm Blue
- 03.4494.74BDA - 383lm Black
- 03.4494.CUBDA - 730lm Copper



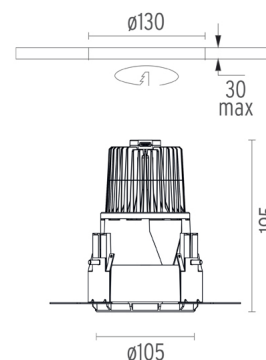
08.9101.00

Fast&Perfect tool Ø153

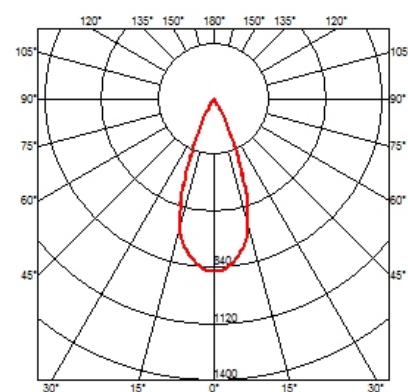


08.9104.00

Installation frame No Trim



CERTIFICATIONS



Kap Ø105 Dali . Lamps



Phosphor LED

Lamp category:
LED

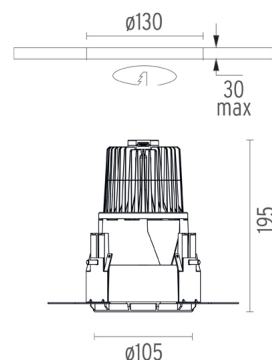
Lamp type:
Phosphor LED



Kap Ø105 Dali designed by FLOS Architectural

Recessed luminaire with LED light source. Remote electronic transformer 220/240V included.

- 03.4494.B1BDA - 617lm White
- 03.4494.GLBDA - 634lm Gold
- 03.4494.BUBDA - 341lm Blue
- 03.4494.74BDA - 383lm Black
- 03.4494.CUBDA - 730lm Copper



CERTIFICATIONS

