

FLOS

KAP Ø105 I-10V

Number of heads	1
Mounting	Ceiling recessed
Lamps description	Phosphor LED 15,6W 1300 lm 3000K CRI 98
Luminaire luminous flux	Extreme Cut-off. See reference number
Environment	Indoor
Notes	Conventional pre-installation frame and/or Fast&Perfect. To be ordered separately.

OPTICAL

Light controller description	Reflector
Aiming	Fixed
Light distribution symmetry	Symmetric
Beam angle	37°

ELECTRICAL

Transformer availability	Included
Transformer mounting	Remote
Transformer type	Electronic dimmable I-10V
Emergency	Without
Insulation class	Class II

PHYSICAL

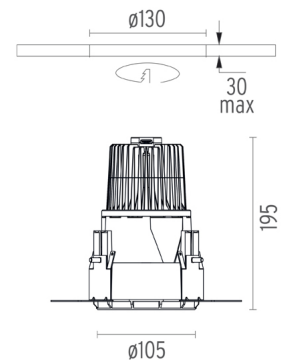
Cutout diameter (mm)	130
Diameter (mm)	105
Recessed depth (mm)	195
Construction material	Die-cast aluminum
Weight (kg)	0,83



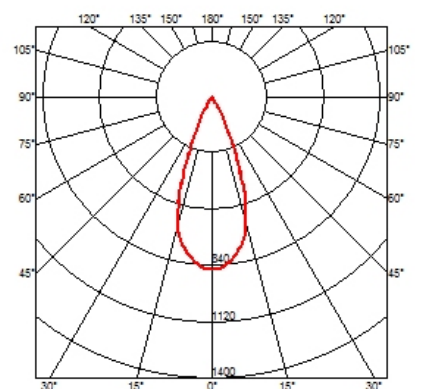
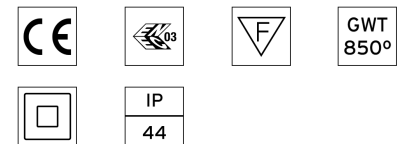
Kap Ø105 I-10V
designed by FLOS Architectural

Recessed luminaire with LED light source. Remote electronic transformer 220/240V included.

●	03.4407.BICIV - 621lm	White
●	03.4407.GLCIV - 631lm	Gold
●	03.4407.BUCIV - 341lm	Blue
●	03.4407.74CIV - 383lm	Black
●	03.4407.CUCIV - 730lm	Copper



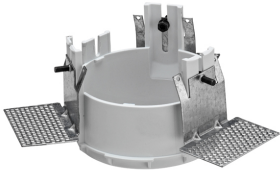
CERTIFICATIONS



FLOS

Kap Ø105 I-10V . Accessories

Mounting



○ 08.8155.00

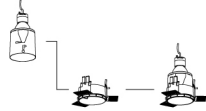
Installation frame No Trim

TO BE COMPLETED WITH:
INSTALLATION FRAME.
AVAILABLE AS ACCESSORY ELEMENT.
MUST BE ORDERED SEPARATELY.

Ø105
□ 08.8155.00



Example
03.4400.B1 + 08.8155.00



HOW TO ORDER



○ 08.8420.00

Installation can for concrete KAP ø105



Kap Ø105 I-10V
designed by FLOS Architectural

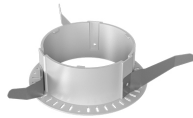
Recessed luminaire with LED light source. Remote electronic transformer 220/240V included.

- 03.4407.BICIV - 621lm White
- 03.4407.GLCIV - 631lm Gold
- 03.4407.BUCIV - 341lm Blue
- 03.4407.74CIV - 383lm Black
- 03.4407.CUCIV - 730lm Copper



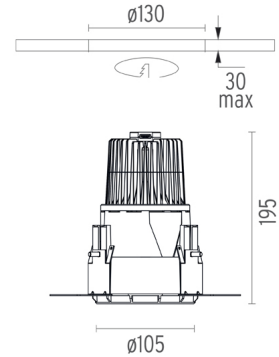
○ 08.9101.00

Fast&Perfect tool ø153

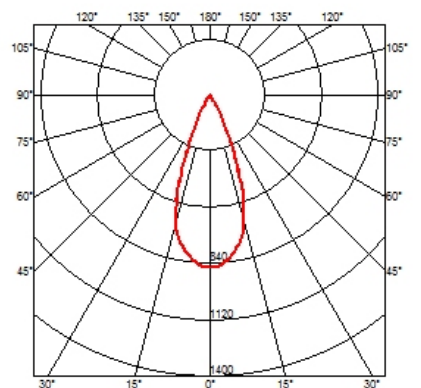


● 08.9104.00

Installation frame No Trim



CERTIFICATIONS



Kap Ø105 I-10V . Lamps



Phosphor LED

Lamp category:
LED

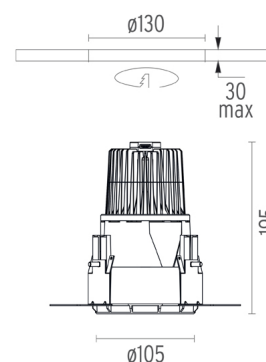
Lamp type:
Phosphor LED



Kap Ø105 I-10V designed by FLOS Architectural

Recessed luminaire with LED light source. Remote electronic transformer 220/240V included.

- 03.4407.BICIV - 621lm White
- 03.4407.GLCIV - 631lm Gold
- 03.4407.BUCIV - 341lm Blue
- 03.4407.74CIV - 383lm Black
- 03.4407.CUCIV - 730lm Copper



CERTIFICATIONS

