

KAP 80 SQUARE WALL-WASHER

| | |
|--------------------------------|--|
| Number of heads | I |
| Mounting | Ceiling recessed |
| Lamps description | LED Array DC 500 mA 9,2W 810 lm 3000K CRI 90 |
| Luminaire luminous flux | Extreme Cut-off. See reference number |
| Environment | Indoor |
| Notes | Diffusing lens included. Fast&Perfect pre-installation frame to be ordered separately. |

OPTICAL

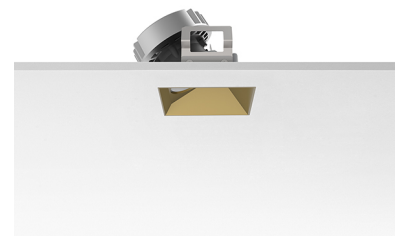
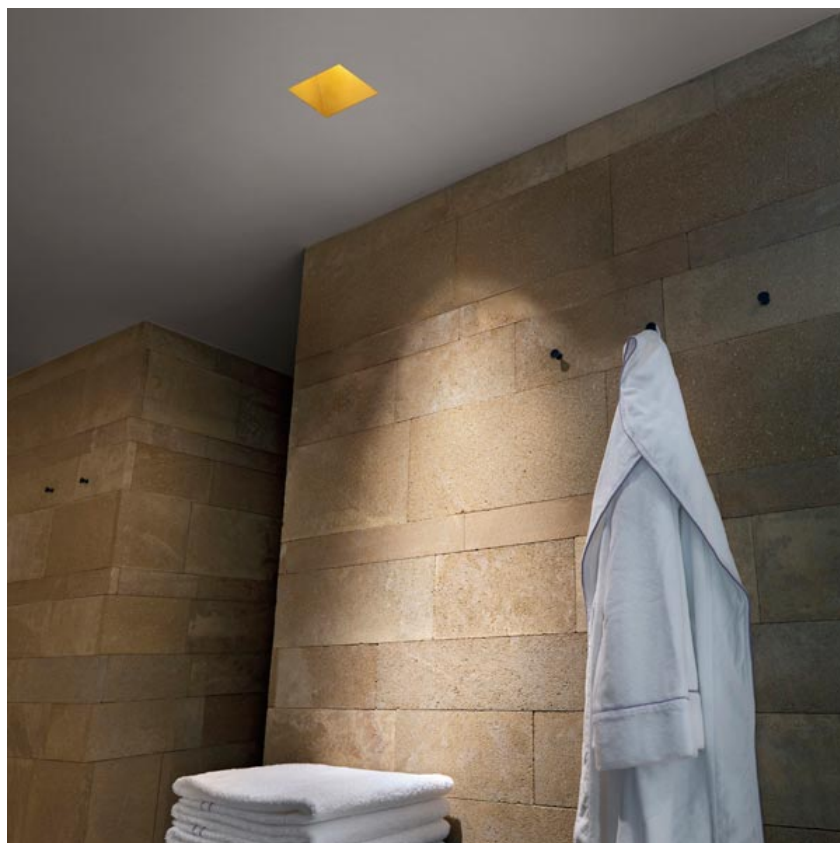
| | |
|------------------------------------|------------|
| Aiming | Fixed |
| Light distribution symmetry | Asymmetric |
| Beam angle | 27° |

ELECTRICAL

| | |
|---------------------------------|--|
| Transformer availability | Separate item |
| Transformer mounting | Remote |
| Transformer type | Electronic, Electronic dimmable, Electronic dimmable I-10V, Electronic dimmable dali |
| Emergency | Without |
| Insulation class | Class III |

PHYSICAL

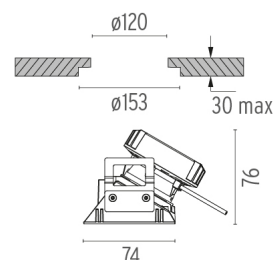
| | |
|------------------------------|-------------------|
| Recessed depth (mm) | 81 |
| Construction material | Die-cast aluminum |
| Weight (kg) | 0,24 |



Kap 80 Square Wall-Washer
designed by FLOS Architectural

Recessed luminaire with LED light source. Power supply not included.

| | |
|--------------------|--------|
| 03.4190.GL - 691lm | Gold |
| 03.4190.B1 - 608lm | White |
| 03.4190.BU - 595lm | Blue |
| 03.4190.74 - 555lm | Black |
| 03.4190.CU - 613lm | Copper |



CERTIFICATIONS



Kap 80 Square Wall-Washer . Accessories

Power Supply



60.8534

Constant Current Power Supply for LED. 32W

Continuous current power supply of 32W, 230/240V - 50/60Hz with power current selected through adjustable 350/500/700 mA switch by trailing and leading edge dimming or push dimming.

Maximum length of 1.5 mm² secondary conductor (m): 10

Maximum length of 2.5 mm² secondary conductor (m): 15



60.8533

Constant Current Power Supply for LED. 25W

Continuous current power supply of 25W, 120-240V - 50/60Hz with power current selected through adjustable 350/500/700mA 1-10V switch or push dimming.

Maximum length of 1.5 mm² secondary conductor (m): 10

Maximum length of 2.5 mm² secondary conductor (m): 15



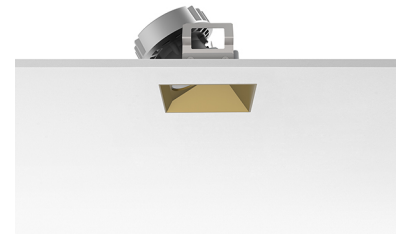
60.8847

Constant Current Power Supply for LED. 10-20W

Continuous current power supply of 10-20W, 110/240V - 50/60Hz with power current selected through adjustable 250/350/400/450/500/ 550/600/700 mA Dali switch. (Johnny 120 with accessories max 450 mA)

Maximum length of 1.5 mm² secondary conductor (m): 10

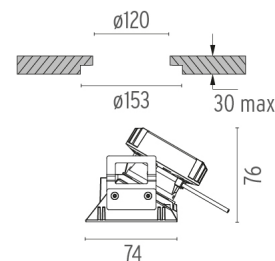
Maximum length of 2.5 mm² secondary conductor (m): 15



Kap 80 Square Wall-Washer
designed by FLOS Architectural

Recessed luminaire with LED light source. Power supply not included.

| | |
|--------------------|--------|
| 03.4190.GL - 691lm | Gold |
| 03.4190.B1 - 608lm | White |
| 03.4190.BU - 595lm | Blue |
| 03.4190.74 - 555lm | Black |
| 03.4190.CU - 613lm | Copper |



60.8880

Constant Current Power Supply for LED. 6W-100/14W-240V

Continuous current power supply of 6W, 100V / 14W, 240V - 50/60Hz with 500 mA supply voltage.

Maximum length of 1.5 mm² secondary conductor (m): 50

Maximum length of 2.5 mm² secondary conductor (m): 50

CERTIFICATIONS



Kap 80 Square Wall-Washer . Accessories

Mounting



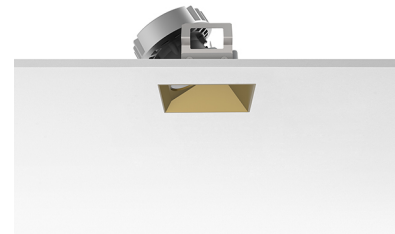
08.9103.00

Installation frame No Trim



08.9101.00

Fast&Perfect tool ø153

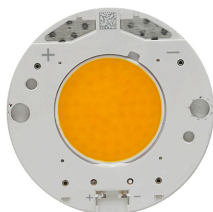


Kap 80 Square Wall-Washer
designed by FLOS Architectural

Recessed luminaire with LED light source. Power supply not included.

| | |
|--------------------|--------|
| 03.4190.GL - 691lm | Gold |
| 03.4190.BI - 608lm | White |
| 03.4190.BU - 595lm | Blue |
| 03.4190.74 - 555lm | Black |
| 03.4190.CU - 613lm | Copper |

Kap 80 Square Wall-Washer . Lamps

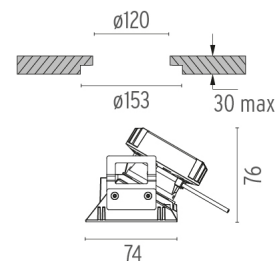


LED Array

Lamp category:
LED

Socket:
Special base

Lamp type:
LED Array



CERTIFICATIONS

