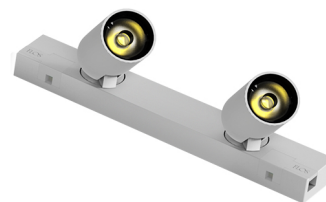


LED SQUAD 2 SPOT

Number of heads	1
Mounting	Ceiling surface, Wall surface
Lamps description	Power LED 6W 2x220 lm 3000K CRI 80
Luminaire luminous flux	See reference number
Voltage (V)	24
Environment	Indoor
Notes	Installation cables included: power cable 500 mm, connection cable 60 mm. Non Dimmable



OPTICAL

Aiming	Adjustable
Light distribution symmetry	Symmetric
Beam angle	28° Flood

LED Squad 2 Spot

designed by FLOS Architectural

Projector to be installed on surface.
Non dimmable. Power supply not included.

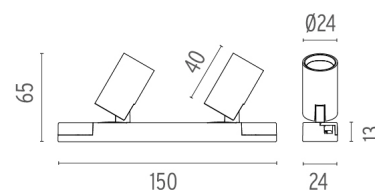
ELECTRICAL

Transformer availability	Separate item
Transformer mounting	Remote
Transformer type	Electronic
Emergency	Without
Insulation class	Class III

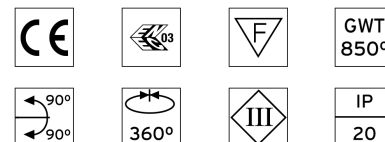
●	03.3977.30A - 2x157lm	White
●	03.3977.02A - 2x157lm	Grey
●	03.3977.14A - 2x157lm	Black

PHYSICAL

Construction material	Aluminium
Weight (kg)	0,15



CERTIFICATIONS



LED Squad 2 Spot . Accessories

Power Supply



60.8495

Electronic transformer with constant voltage (24V) for LED. 20W

Electronic transformer with constant voltage (24V) for LED. 100/240V.

Maximum length of 1.5 mm2 secondary conductor (m): 5



60.8496

Electronic transformer with constant voltage (24V) for LED. 60W

Electronic transformer with constant voltage (24V) for LED. 100/240V.

Maximum length of 1.5 mm2 secondary conductor (m): 5



LED Squad 2 Spot designed by FLOS Architectural

Projector to be installed on surface. Non dimmable. Power supply not included.

- 03.3977.30A - 2x157lm White
- 03.3977.02A - 2x157lm Grey
- 03.3977.14A - 2x157lm Black

Electrical



60.8640

Dimmable I-10V Control Unit

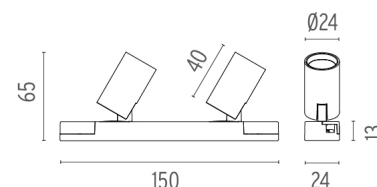
Dimmable I-10V control unit with 1 channel for 24V LED modules. Power supply not included. Max. 120 W - 5A.



60.8635

Dimmable Dali control unit with 1 channel for 24V LED modules

Power supply not included.



CERTIFICATIONS



LED Squad 2 Spot . Lamps



Power LED

Lamp category:
LED

Socket:
Special base

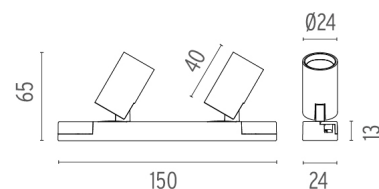
Lamp type:
Power LED



LED Squad 2 Spot designed by FLOS Architectural

Projector to be installed on surface.
Non dimmable. Power supply not included.

- 03.3977.30A - 2x157lm White
- 03.3977.02A - 2x157lm Grey
- 03.3977.14A - 2x157lm Black



CERTIFICATIONS

