

## COMPASS SPOT FOR TRACK HORIZONTAL GEAR BOX

<b>Number of heads</b>	1
<b>Mounting</b>	Track mounting
<b>Lamps description</b>	QR-111 G53 Max 100W or LED QR-111
<b>Voltage (V)</b>	220/240
<b>Environment</b>	Indoor
<b>Notes</b>	Please ask Flos architectural sales team about QR-111 lamps LED retrofit compatibility.



### OPTICAL

<b>Light controller description</b>	Bare lamps
<b>Aiming</b>	Adjustable
<b>Light distribution symmetry</b>	Symmetric
<b>Beam angle</b>	24°, 4°, 45° Wide Flood, 8° Super Spot

### ELECTRICAL

<b>Transformer availability</b>	Included
<b>Transformer mounting</b>	Integral
<b>Transformer type</b>	Electronic dimmable
<b>Emergency</b>	Without
<b>Insulation class</b>	Class I

### PHYSICAL

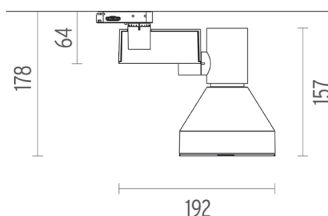
<b>Height (mm)</b>	178
<b>Construction material</b>	Die-cast aluminum
<b>Weight (kg)</b>	0,95

### Compass Spot For Track Horizontal Gear Box

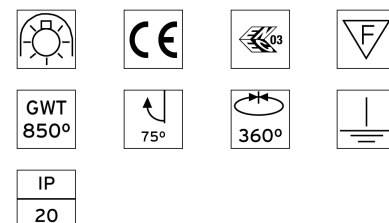
designed by FLOS Architectural

Spotlight to be installed on 3-phase track. Electronic transformer integrated 220/240V – 12V, 50/60Hz. Dimmable from 10% to 100% of full output using built-in potentiometer. LED power supply indicator.

● 03.3655.30	Matt white
● 03.3655.02	Grey
● 03.3655.14	Matt black



### CERTIFICATIONS



## Compass Spot For Track Horizontal Gear Box . Accessories

### Optical



● 08.8034.14

#### Screening cylinder

Screening cylinder with rotating pin in a black thermoplastic material



● 08.8036.14

#### Honeycomb

Anti-glare grid in aluminium cells with black liquid paint finish



● 08.8032.14

#### Adjustable metal fins

Adjustable metal fins with black powder-coated finish.



### Compass Spot For Track Horizontal Gear Box

designed by FLOS Architectural

Spotlight to be installed on 3-phase track. Electronic transformer integrated 220/240V – 12V, 50/60Hz. Dimmable from 10% to 100% of full output using built-in potentiometer. LED power supply indicator.

● 03.3655.30	Matt white
● 03.3655.02	Grey
● 03.3655.14	Matt black



08.8930.68

#### Elliptical light distribution lens

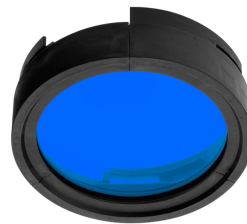
Elliptical light distribution lens in 4mm thick tempered glass.



08.8931.68

#### Flood lens made in press glass

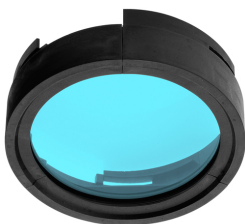
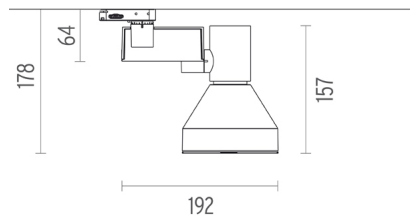
Flood lens made in press glass.



● 08.8932.64.OD

#### Blue filter

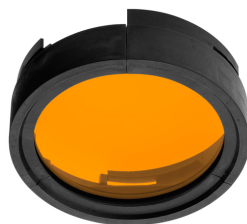
Colored filters in 3 mm thick dichroic material



● 08.8932.65.OD

#### Sky blue filter

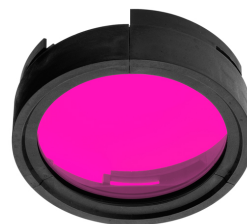
Colored filters in 3 mm thick dichroic material



● 08.8932.66.OD

#### Amber filter

Colored filters in 3 mm thick dichroic material

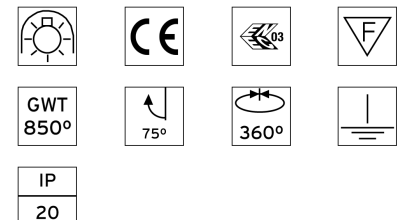


● 08.8932.67.OD

#### Red filter

Colored filters in 3 mm thick dichroic material

### CERTIFICATIONS



## Compass Spot For Track Horizontal Gear Box . Accessories



08.8932.98.OD

**U.V. filter**

U.V. filter



08.8933.68

**I.R. filter**

I.R. filter



08.8932.69

**Hot Light**

Hot Light

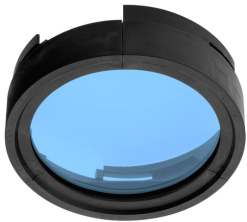


### Compass Spot For Track Horizontal Gear Box

designed by FLOS Architectural

Spotlight to be installed on 3-phase track. Electronic transformer integrated 220/240V – 12V, 50/60Hz. Dimmable from 10% to 100% of full output using built-in potentiometer. LED power supply indicator.

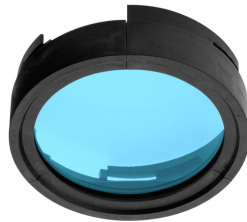
- 03.3655.30 Matt white
- 03.3655.02 Grey
- 03.3655.14 Matt black



08.8932.CL

**Cold light filter**

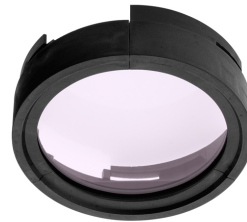
Cold light filter



08.8932.DL

**Daylight filter**

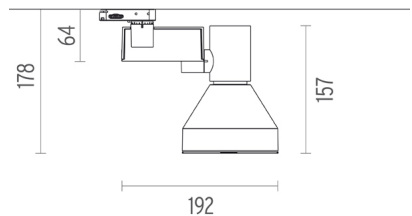
Daylight filter



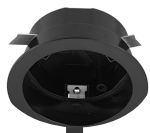
08.8932.ND

**Neodimium**

Neodimium



## Mounting



● 60.3022.11

● 60.3022.14

**Recessed box for fix-point**



● 60.3023.11

● 60.3023.14

● 60.3023.29

**Fix-point**

## CERTIFICATIONS



## Compass Spot For Track Horizontal Gear Box . Lamps



60.6398

**QR-III**

**Lamp Watt:**  
35 W

**Lamp category:**  
Halogen low voltage

**Socket:**  
G53

**Lamp angle:**  
24 °

**Color temperature (K):**  
3000 °K

**Catalog reference:**  
60.6398

**Lamp type:**  
QR-III



60.6374

**QR-III**

**Lamp Watt:**  
50 W

**Lamp category:**  
Halogen low voltage

**Socket:**  
G53

**Lamp angle:**  
24 °

**Color temperature (K):**  
3000 °K

**Catalog reference:**  
60.6374

**Lamp type:**  
QR-III



60.6375

**QR-III**

**Lamp Watt:**  
75 W

**Lamp category:**  
Halogen low voltage

**Socket:**  
G53

**Lamp angle:**  
8 °

**Color temperature (K):**  
3000 °K

**Catalog reference:**  
60.6375




**Lamp type:**  
QR-III



### Compass Spot For Track Horizontal Gear Box

designed by FLOS Architectural

Spotlight to be installed on 3-phase track. Electronic transformer integrated 220/240V – 12V, 50/60Hz. Dimmable from 10% to 100% of full output using built-in potentiometer. LED power supply indicator.

	03.3655.30	Matt white
	03.3655.02	Grey
	03.3655.14	Matt black



60.6376

**QR-III**

**Lamp Watt:**  
75 W

**Lamp category:**  
Halogen low voltage

**Socket:**  
G53

**Lamp angle:**  
24 °

**Color temperature (K):**  
3000 °K

**Catalog reference:**  
60.6376

**Lamp type:**  
QR-III



60.6862

**QR-III**

**Lamp Watt:**  
30 W

**Lamp category:**  
Halogen low voltage

**Socket:**  
G53

**Lamp angle:**  
8 °

**Color temperature (K):**  
3000 °K

**Catalog reference:**  
60.6862

**Lamp type:**  
QR-III



60.6861

**QR-III**

**Lamp Watt:**  
45 W

**Lamp category:**  
Halogen low voltage

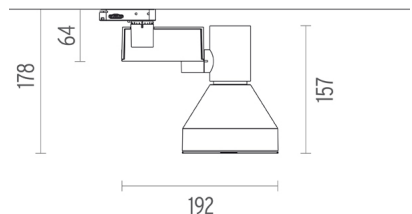
**Socket:**  
G53

**Lamp angle:**  
45 °

**Color temperature (K):**  
3000 °K

**Catalog reference:**  
60.6861

**Lamp type:**  
QR-III



### CERTIFICATIONS



## Compass Spot For Track Horizontal Gear Box . Lamps



60.6863

### QR-111

**Lamp Watt:**  
60 W

**Lamp category:**  
Halogen low voltage

**Socket:**  
G53

**Lamp angle:**  
8 °

**Color temperature (K):**  
3000 °K

**Catalog reference:**  
60.6863

**Lamp type:**  
QR-111

60.6864

### QR-111

**Lamp Watt:**  
60 W

**Lamp category:**  
Halogen low voltage

**Socket:**  
G53

**Lamp angle:**  
24 °

**Color temperature (K):**  
3000 °K

**Catalog reference:**  
60.6864

**Lamp type:**  
QR-111

60.6865

### QR-111

**Lamp Watt:**  
60 W

**Lamp category:**  
Halogen low voltage

**Socket:**  
G53

**Lamp angle:**  
45 °

**Color temperature (K):**  
3000 °K

**Catalog reference:**  
60.6865

**Lamp type:**  
QR-111

### Compass Spot For Track Horizontal Gear Box

designed by FLOS Architectural

Spotlight to be installed on 3-phase track. Electronic transformer integrated 220/240V – 12V, 50/60Hz. Dimmable from 10% to 100% of full output using built-in potentiometer. LED power supply indicator.

● 03.3655.30	Matt white
● 03.3655.02	Grey
● 03.3655.14	Matt black



60.6962

### LED QR-111

**Lamp Watt:**  
12 W

**Lamp category:**  
LED

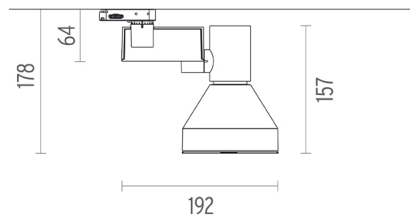
**Socket:**  
G53

**Lamp angle:**  
24 °

**Color temperature (K):**  
2800 °K

**Catalog reference:**  
60.6962

**Lamp type:**  
LED QR-111



### CERTIFICATIONS

