

COMPASS SPOT FOR TRACK VERTICAL GEAR BOX

Number of heads	1
Mounting	Track mounting
Lamps description	QR-111 G53 Max 100W or LED QR-111
Voltage (V)	220/240
Environment	Indoor
Notes	Please ask Flos architectural sales team about QR-111 lamps LED retrofit compatibility.

OPTICAL

Light controller description	Bare lamps
Aiming	Adjustable
Light distribution symmetry	Symmetric
Beam angle	24°, 4°, 45° Wide Flood, 8° Super Spot

ELECTRICAL

Transformer availability	Included
Transformer mounting	Integral
Transformer type	Electronic dimmable
Emergency	Without
Insulation class	Class I

PHYSICAL

Height (mm)	247
Construction material	Die-cast aluminum
Weight (kg)	0,95

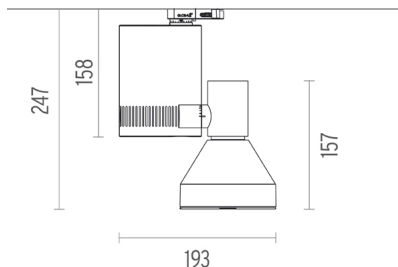


Compass Spot For Track Vertical Gear Box

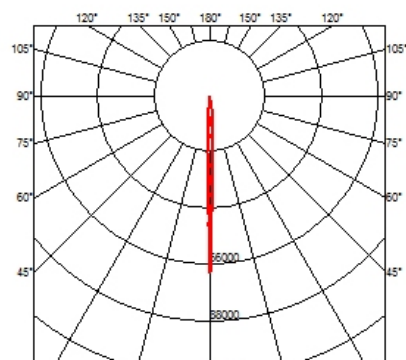
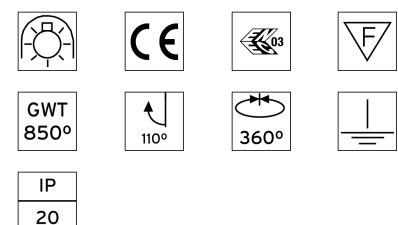
designed by FLOS Architectural

Spotlight to be installed on ceiling. Electronic transformer integrated 220/240V – 12V, 50/60Hz. Dimmable from 10% to 100% of full output using built-in potentiometer. LED power supply indicator.

● 03.3605.30	Matt white
● 03.3605.02	Grey
● 03.3605.14	Matt black



CERTIFICATIONS



Compass Spot For Track Vertical Gear Box . Accessories

Optical



● 08.8034.14

Screening cylinder

Screening cylinder with rotating pin in a black thermoplastic material



● 08.8036.14

Honeycomb

Anti-glare grid in aluminium cells with black liquid paint finish



● 08.8032.14

Adjustable metal fins

Adjustable metal fins with black powder-coated finish.



Compass Spot For Track Vertical Gear Box

designed by FLOS Architectural

Spotlight to be installed on ceiling. Electronic transformer integrated 220/240V – 12V, 50/60Hz. Dimmable from 10% to 100% of full output using built-in potentiometer. LED power supply indicator.

- 03.3605.30 Matt white
- 03.3605.02 Grey
- 03.3605.14 Matt black



08.8930.68

Elliptical light distribution lens

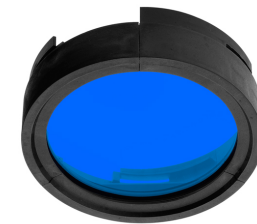
Elliptical light distribution lens in 4mm thick tempered glass.



08.8931.68

Flood lens made in press glass

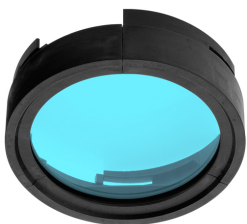
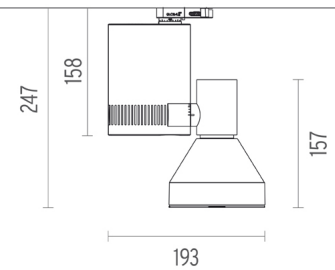
Flood lens made in press glass.



● 08.8932.64.OD

Blue filter

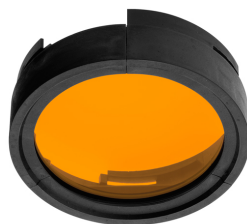
Colored filters in 3 mm thick dichroic material



● 08.8932.65.OD

Sky blue filter

Colored filters in 3 mm thick dichroic material



● 08.8932.66.OD

Amber filter

Colored filters in 3 mm thick dichroic material

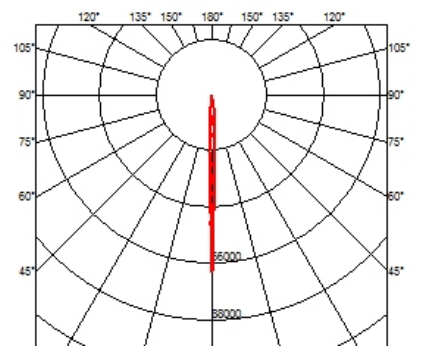
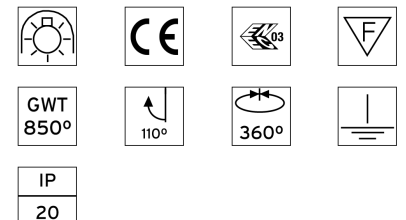


● 08.8932.67.OD

Red filter

Colored filters in 3 mm thick dichroic material

CERTIFICATIONS



Compass Spot For Track Vertical Gear Box . Accessories



08.8932.98.OD

U.V. filter

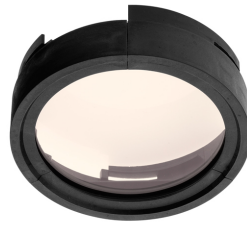
U.V. filter



08.8933.68

I.R. filter

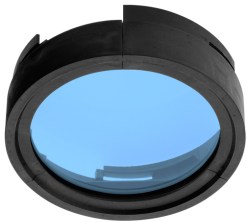
I.R. filter



08.8932.69

Hot Light

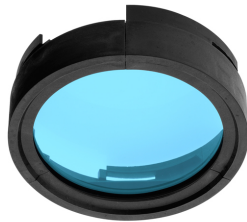
Hot Light



08.8932.CL

Cold light filter

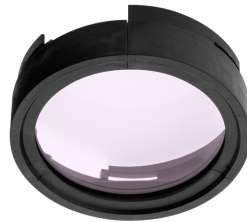
Cold light filter



08.8932.DL

Daylight filter

Daylight filter



08.8932.ND

Neodimium

Neodimium

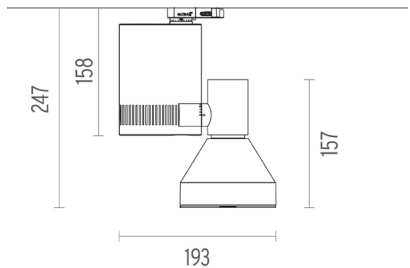


Compass Spot For Track Vertical Gear Box

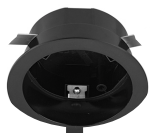
designed by FLOS Architectural

Spotlight to be installed on ceiling. Electronic transformer integrated 220/240V – 12V, 50/60Hz. Dimmable from 10% to 100% of full output using built-in potentiometer. LED power supply indicator.

- 03.3605.30 Matt white
- 03.3605.02 Grey
- 03.3605.14 Matt black



Mounting



● 60.3022.11

● 60.3022.14

Recessed box for fix-point



● 60.3023.11

● 60.3023.14

● 60.3023.29

Fix-point

CERTIFICATIONS



Compass Spot For Track Vertical Gear Box . Lamps



60.6398

QR-III

Lamp Watt:

35 W

Lamp category:

Halogen low voltage

Socket:

G53

Lamp angle:

24 °

Color temperature (K):

3000 °K

Catalog reference:

60.6398

Lamp type:

QR-III



60.6374

QR-III

Lamp Watt:

50 W

Lamp category:

Halogen low voltage

Socket:

G53

Lamp angle:

24 °

Color temperature (K):

3000 °K

Catalog reference:

60.6374

Lamp type:

QR-III



60.6375

QR-III

Lamp Watt:

75 W

Lamp category:

Halogen low voltage

Socket:

G53

Lamp angle:

8 °

Color temperature (K):

3000 °K

Catalog reference:

60.6375

Lamp type:




QR-III

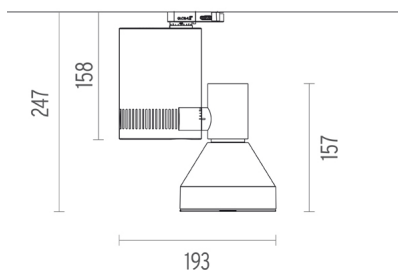


Compass Spot For Track Vertical Gear Box

designed by FLOS Architectural

Spotlight to be installed on ceiling. Electronic transformer integrated 220/240V – 12V, 50/60Hz. Dimmable from 10% to 100% of full output using built-in potentiometer. LED power supply indicator.

	03.3605.30	Matt white
	03.3605.02	Grey
	03.3605.14	Matt black



60.6376

QR-III

Lamp Watt:

75 W

Lamp category:

Halogen low voltage

Socket:

G53

Lamp angle:

24 °

Color temperature (K):

3000 °K

Catalog reference:

60.6376

Lamp type:

QR-III



60.6862

QR-III

Lamp Watt:

30 W

Lamp category:

Halogen low voltage

Socket:

G53

Lamp angle:

8 °

Color temperature (K):

3000 °K

Catalog reference:

60.6862

Lamp type:

QR-III



60.6861

QR-III

Lamp Watt:

45 W

Lamp category:

Halogen low voltage

Socket:

G53

Lamp angle:

45 °

Color temperature (K):

3000 °K

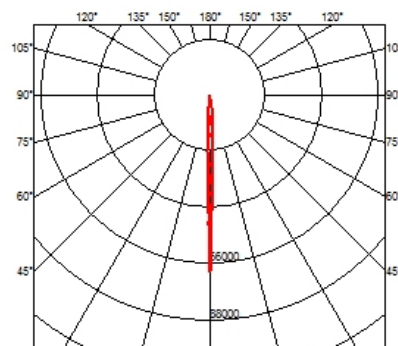
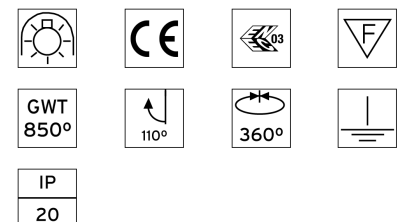
Catalog reference:

60.6861

Lamp type:

QR-III

CERTIFICATIONS



Compass Spot For Track Vertical Gear Box . Lamps



60.6863

QR-III

Lamp Watt:
60 W

Lamp category:
Halogen low voltage

Socket:
G53

Lamp angle:
8 °

Color temperature (K):
3000 °K

Catalog reference:
60.6863

Lamp type:
QR-III



60.6864

QR-III

Lamp Watt:
60 W

Lamp category:
Halogen low voltage

Socket:
G53

Lamp angle:
24 °

Color temperature (K):
3000 °K

Catalog reference:
60.6864

Lamp type:
QR-III



60.6865

QR-III

Lamp Watt:
60 W

Lamp category:
Halogen low voltage

Socket:
G53

Lamp angle:
45 °

Color temperature (K):
3000 °K

Catalog reference:
60.6865

Lamp type:
QR-III



Compass Spot For Track Vertical Gear Box

designed by FLOS Architectural

Spotlight to be installed on ceiling.
Electronic transformer integrated
220/240V – 12V, 50/60Hz.
Dimmable from 10% to 100% of full
output using built-in potentiometer.
LED power supply indicator.

- 03.3605.30 Matt white
- 03.3605.02 Grey
- 03.3605.14 Matt black



60.6962

LED QR-III

Lamp Watt:
12 W

Lamp category:
LED

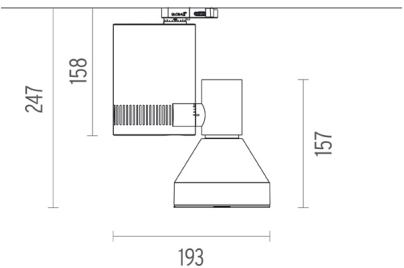
Socket:
G53

Lamp angle:
24 °

Color temperature (K):
2800 °K

Catalog reference:
60.6962

Lamp type:
LED QR-III



CERTIFICATIONS

