

FLOS

COMPASS SPOT FOR TRACK

Number of heads	1
Mounting	Track mounting
Lamps description	PAR 30S E27 Max 100W
Voltage (V)	220/240
Environment	Indoor

OPTICAL

Light controller description	Bare Lamps
Reflector finish	Aluminum
Aiming	Adjustable
Light distribution symmetry	Symmetric
Beam angle	10° Spot, 30° Wide Flood

ELECTRICAL

Emergency	Without
Insulation class	Class I

PHYSICAL

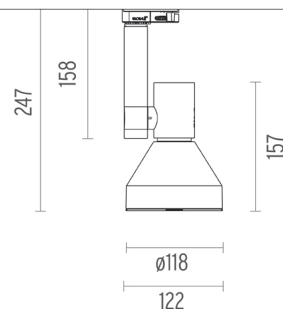
Height (mm)	247
Construction material	Die-cast aluminum
Weight (kg)	0,52



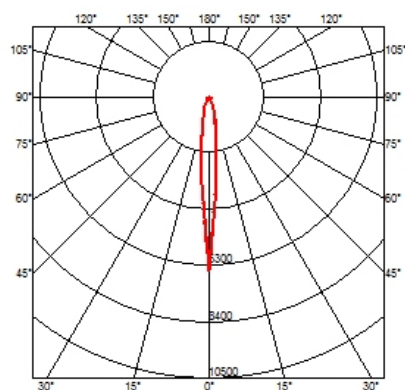
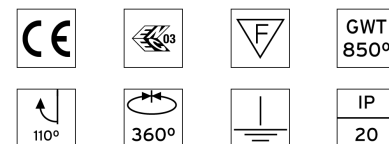
Compass Spot For Track
designed by FLOS Architectural

Spotlight with main voltage light source to be installed on 3-phase track. Universal adapter integrated

● 03.3603.30	Matt white
● 03.3603.02	Grey
● 03.3603.14	Matt black



CERTIFICATIONS



Compass Spot For Track . Accessories

Optical



● 08.8034.14

Screening cylinder

Screening cylinder with rotating pin in a black thermoplastic material



● 08.8036.14

Honeycomb

Anti-glare grid in aluminium cells with black liquid paint finish



● 08.8032.14

Adjustable metal fins

Adjustable metal fins with black powder-coated finish.



Compass Spot For Track designed by FLOS Architectural

Spotlight with main voltage light source to be installed on 3-phase track. Universal adapter integrated

- 03.3603.30 Matt white
- 03.3603.02 Grey
- 03.3603.14 Matt black



08.8930.68

Elliptical light distribution lens

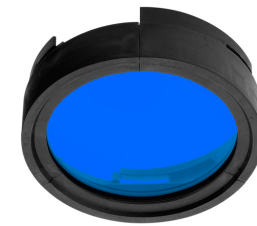
Elliptical light distribution lens in 4mm thick tempered glass.



08.8931.68

Flood lens made in press glass

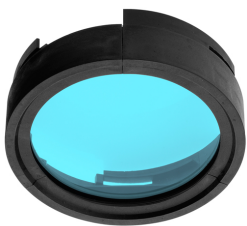
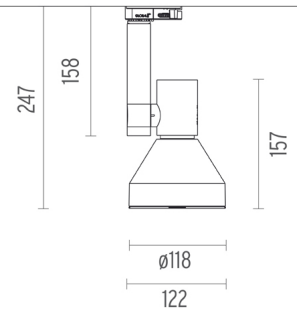
Flood lens made in press glass.



● 08.8932.64.OD

Blue filter

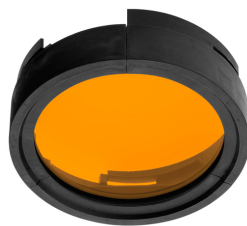
Colored filters in 3 mm thick dichroic material



● 08.8932.65.OD

Sky blue filter

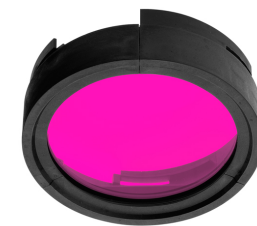
Colored filters in 3 mm thick dichroic material



● 08.8932.66.OD

Amber filter

Colored filters in 3 mm thick dichroic material

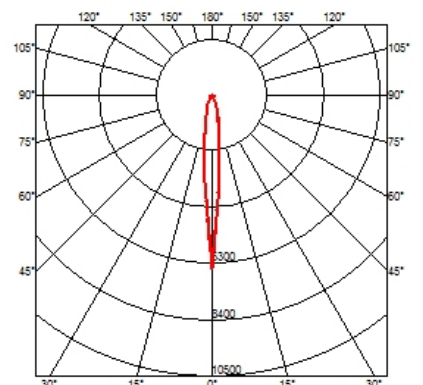
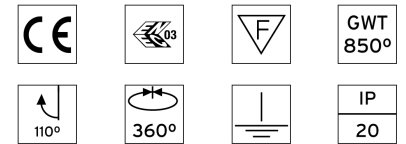


● 08.8932.67.OD

Red filter

Colored filters in 3 mm thick dichroic material

CERTIFICATIONS



Compass Spot For Track . Accessories



08.8932.98.OD

U.V. filter

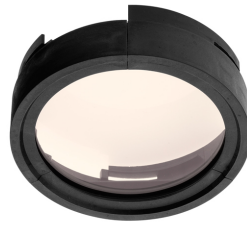
U.V. filter



08.8933.68

I.R. filter

I.R. filter



08.8932.69

Hot Light

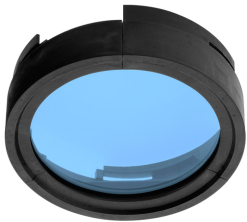
Hot Light



Compass Spot For Track
designed by FLOS Architectural

Spotlight with main voltage light source to be installed on 3-phase track. Universal adapter integrated

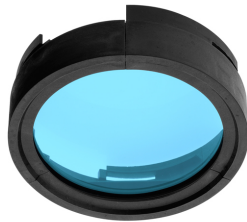
- 03.3603.30 Matt white
- 03.3603.02 Grey
- 03.3603.14 Matt black



08.8932.CL

Cold light filter

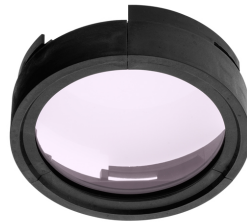
Cold light filter



08.8932.DL

Daylight filter

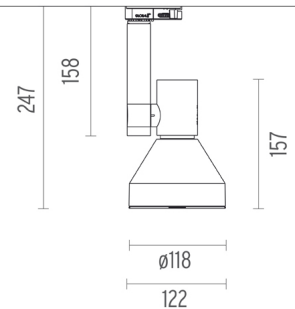
Daylight filter



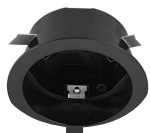
08.8932.ND

Neodimium

Neodimium



Mounting



● 60.3022.11

● 60.3022.14

Recessed box for fix-point



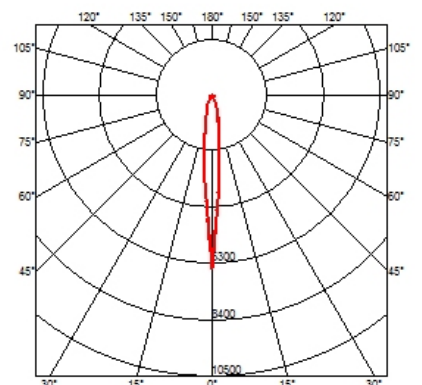
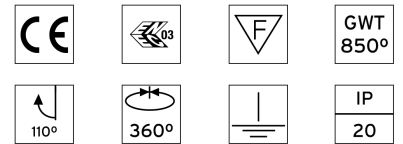
● 60.3023.11

● 60.3023.14

● 60.3023.29

Fix-point

CERTIFICATIONS



Compass Spot For Track . Lamps



60.6336

PAR 30S

Lamp Watt:
75 W

Lamp category:
Halogen mains

Socket:
E27

Lamp angle:
10 °

Color temperature (K):
2900 °K

Catalog reference:
60.6336

Lamp type:
PAR30 S



60.6341

PAR 30S

Lamp Watt:
100 W

Lamp category:
Halogen mains

Socket:
E27

Lamp angle:
30 °

Color temperature (K):
2900 °K

Catalog reference:
60.6341

Lamp type:
PAR30 S



60.6337

PAR 30S

Lamp Watt:
75 W

Lamp category:
Halogen mains

Socket:
E27

Lamp angle:
30 °

Color temperature (K):
2900 °K

Catalog reference:
60.6337

Lamp type:
PAR30 S



60.6340

PAR 30S

Lamp Watt:
100 W

Lamp category:
Halogen mains

Socket:
E27

Lamp angle:
10 °

Color temperature (K):
2900 °K

Catalog reference:
60.6340

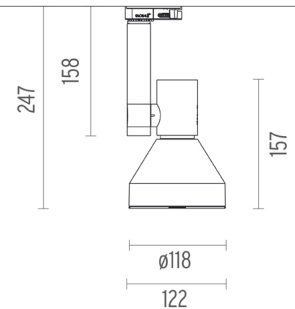
Lamp type:
PAR30 S



Compass Spot For Track
designed by FLOS Architectural

Spotlight with main voltage light source to be installed on 3-phase track. Universal adapter integrated

- 03.3603.30 Matt white
- 03.3603.02 Grey
- 03.3603.14 Matt black



CERTIFICATIONS

