

COMPASS BOX SMALL 4L

Number of heads	4
Mounting	Ceiling surface
Lamps description	4 x LED Array 6,2W 703 lm 3000K CRI 80
Luminaire luminous flux	See reference number
Voltage (V)	220/240
Environment	Indoor

OPTICAL

Aiming	Adjustable
Beam angle	59° Wide Flood

ELECTRICAL

Transformer availability	Included
Transformer mounting	Integral
Transformer type	Electronic
Emergency	Without
Insulation class	Class I

PHYSICAL

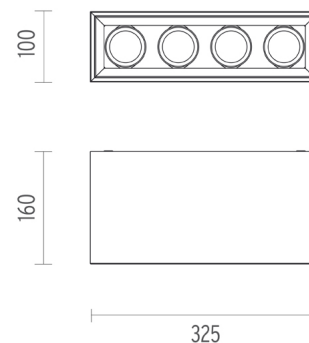
Length (mm)	325
Width (mm)	100
Height (mm)	160
Construction material	Aluminium
Weight (kg)	3



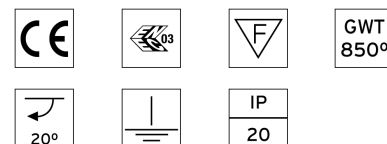
Compass Box Small 4L designed by FLOS Architectural

Surface spotlight to be installed on ceiling/wall with LED light source. Non-regulable 220-240V, 50-60Hz power supply integrated in luminaire body.

03.2642.30A - 4x552lm	Matt white
03.2642.29A - 4x552lm	Anodised aluminium
03.2642.14A - 4x552lm	Matt black
03.2642.WGA - 4x552lm	Wenge
03.2642.TKA - 4x552lm	Teak



CERTIFICATIONS



Compass Box Small 4L . Accessories

Optical



08.8196.14

Honeycomb

"Honeycomb" anti-glare grid in aluminium cells with black liquid paint finish.



08.8238.14

Screening cylinder

Screening cylinder with rotating pin in a black thermoplastic material

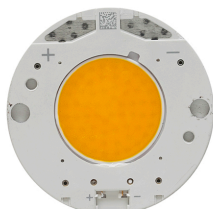


Compass Box Small 4L designed by FLOS Architectural

Surface spotlight to be installed on ceiling/wall with LED light source. Non-regulable 220-240V, 50-60Hz power supply integrated in luminaire body.

- 03.2642.30A - 4x552lm Matt white
- 03.2642.29A - 4x552lm Anodised aluminium
- 03.2642.14A - 4x552lm Matt black
- 03.2642.WGA - 4x552lm Wenge
- 03.2642.TKA - 4x552lm Teak

Compass Box Small 4L . Lamps



LED Array

Lamp category:

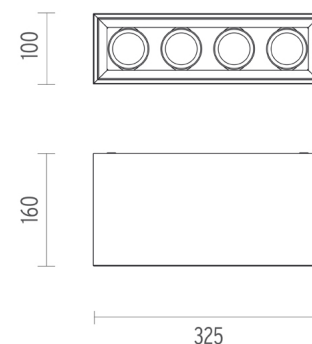
LED

Socket:

Special base

Lamp type:

LED Array



CERTIFICATIONS

