

COMPASS BOX SMALL 1L

Number of heads	1
Mounting	Ceiling surface
Lamps description	LED Array 6,2W 703 lm 3000K CRI 80
Luminaire luminous flux	See reference number
Voltage (V)	220/240
Environment	Indoor

OPTICAL

Aiming	Adjustable
Beam angle	59° Wide Flood

ELECTRICAL

Transformer availability	Included
Transformer mounting	Integral
Transformer type	Electronic
Emergency	Without
Insulation class	Class II

PHYSICAL

Length (mm)	100
Width (mm)	100
Height (mm)	160
Construction material	Aluminium
Weight (kg)	1

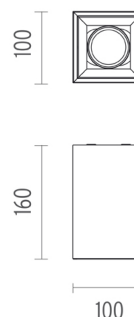


Compass Box Small 1L

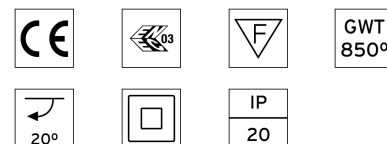
designed by FLOS Architectural

Surface spotlight to be installed on ceiling/wall with LED light source. Non-regulable 220-240V, 50-60Hz power supply integrated in luminaire body.

03.2632.30A - 552lm	Matt white
03.2632.29A - 552lm	Anodised aluminium
03.2632.14A - 552lm	Matt black
03.2632.WGA - 552lm	Wenge
03.2632.TKA - 552lm	Teak



CERTIFICATIONS



Compass Box Small IL . Accessories

Optical



08.8196.14

Honeycomb

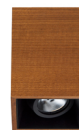
"Honeycomb" anti-glare grid in aluminium cells with black liquid paint finish.



08.8238.14

Screening cylinder

Screening cylinder with rotating pin in a black thermoplastic material

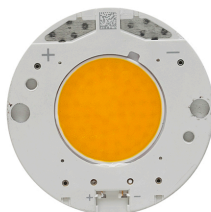


Compass Box Small IL designed by FLOS Architectural

Surface spotlight to be installed on ceiling/wall with LED light source. Non-regulable 220-240V, 50-60Hz power supply integrated in luminaire body.

03.2632.30A - 552lm	Matt white
03.2632.29A - 552lm	Anodised aluminium
03.2632.14A - 552lm	Matt black
03.2632.WGA - 552lm	Wenge
03.2632.TKA - 552lm	Teak

Compass Box Small IL . Lamps



LED Array

Lamp category:

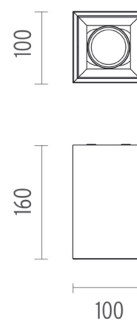
LED

Socket:

Special base

Lamp type:

LED Array



CERTIFICATIONS

