

BON JOUR Ø145 DALI

Number of heads	1
Mounting	Ceiling recessed
Lamps description	LED Array DC 900 mA 27W 2720 lm 3000K CRI 90
Luminaire luminous flux	See reference number
Voltage (V)	220/240
Environment	Indoor
Notes	Pre-installation frame must be ordered separately

OPTICAL

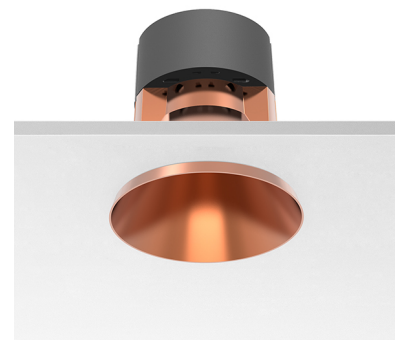
Aiming	Fixed
Light distribution symmetry	Symmetric

ELECTRICAL

Transformer availability	Included
Transformer mounting	Remote
Transformer type	Electronic dimmable dali
Emergency	Without
Insulation class	Class II

PHYSICAL

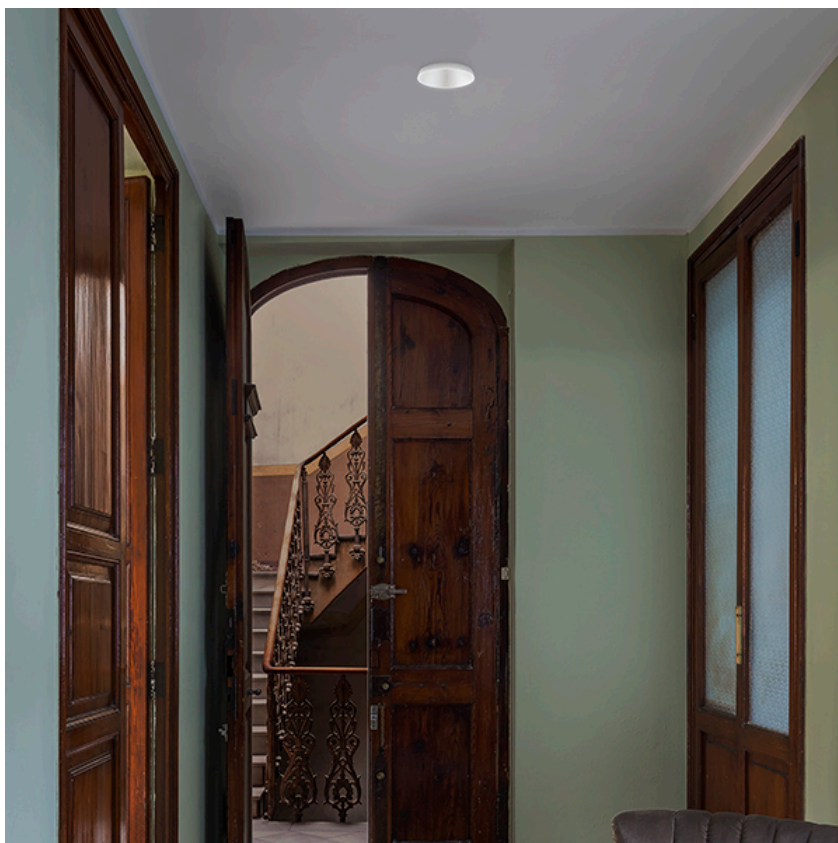
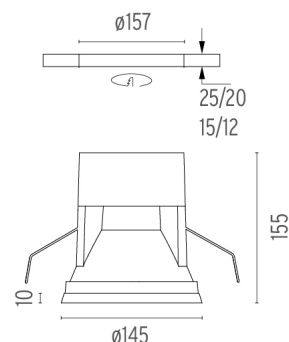
Cutout diameter (mm)	157
Diameter (mm)	145
Recessed depth (mm)	205
Construction material	Injected aluminum
Weight (kg)	1,11



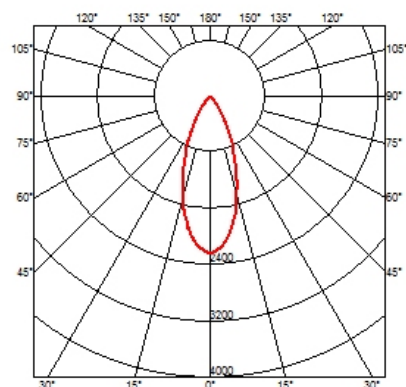
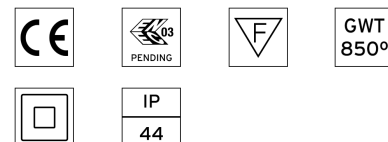
Bon Jour Ø145 Dali
designed by Philippe Starck

Embedded luminaire for LED light source. Remote 220/240V power supply included.

- 03.2008.01.DA - 58° - 1135lm White
- 03.2008.CU.DA - 1084lm Copper
- 03.2008.14.DA - 501lm Black



CERTIFICATIONS



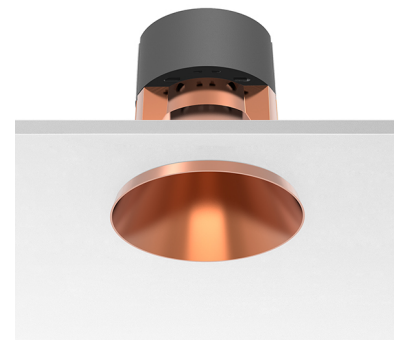
Bon Jour Ø145 Dali . Accessories

Mounting



○ 08.8975.00

Pre-installation frame



Bon Jour Ø145 Dali
designed by Philippe Starck

Embedded luminaire for LED light source. Remote 220/240V power supply included.

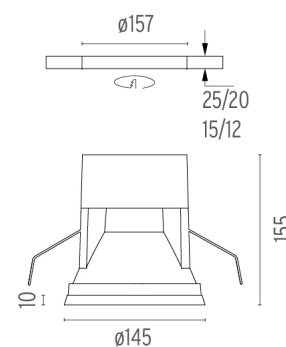
- 03.2008.01.DA - 58° - 1135lm White
- 03.2008.CU.DA - 1084lm Copper
- 03.2008.14.DA - 501lm Black

Optical

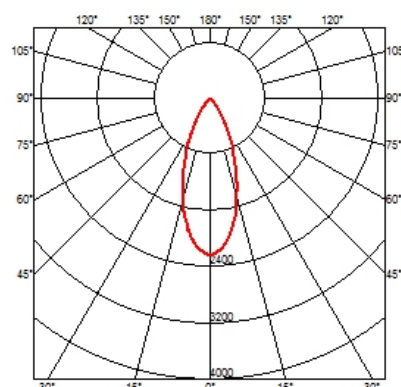
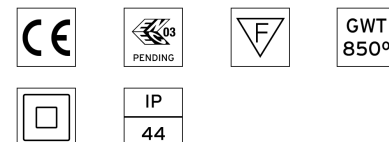


● 08.8980.14

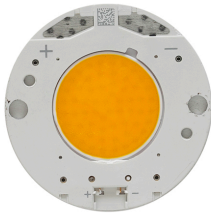
Honeycomb and cross screening cylinder



CERTIFICATIONS



Bon Jour Ø145 Dali . Lamps



LED Array

Lamp category:

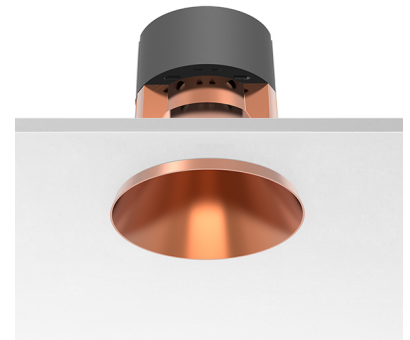
LED

Socket:

Special base

Lamp type:

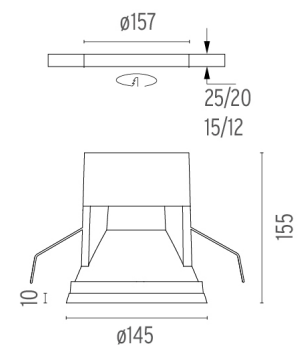
LED Array



Bon Jour Ø145 Dali
designed by Philippe Starck

Embedded luminaire for LED light source. Remote 220/240V power supply included.

- 03.2008.01.DA - 58° - 1135lm White
- 03.2008.CU.DA - 1084lm Copper
- 03.2008.14.DA - 501lm Black



CERTIFICATIONS

