

Cricket

D60 F19 01

Bridgewell Consulting LTD

Anodized aluminium structure.

tipology



bulb included

LED 700mA
3x3W-10°

450 lm
Cri 80



volume - weight

0,003 m³ - 0,40 Kg

technical information



IP67



accessories included



notes

For wall/ceiling/floor

accessories not included

A50102 Converter for high brightness LEDs 3W (max 9W) (max 1 spot)

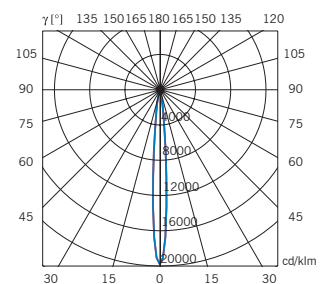
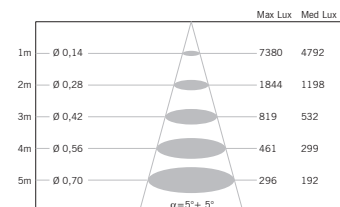
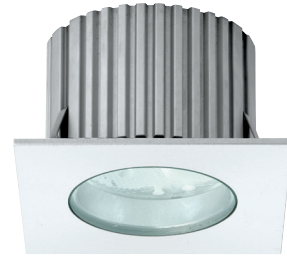
A50103 Converter for high brightness LEDs 3W (min 9W-max 27W) (max 3 spots)

D60Z05 Floor housing

D60Z07 Ceiling-wall housing

D60Z13 Floor housing

See next page





Cricket D60 Moduli per controsoffitto *Modules for false ceiling*

Codice Code	Descrizione Description	Cassaforma Wallbox	Disegno tecnico quotato Quoted technical drawing
D60 F15 F16 F19 F20		D60 Z05 Cassaforma per pavimento <i>Floor housing</i>	
D60 F13 F15 F16 F17 F19 F20		D60 Z07 Anello per cartongesso <i>False ceiling ring</i>	
D60 F27 F28		D60 Z09 Cassaforma per pavimento <i>Floor housing</i>	
D60 F25 F27 F28		D60 Z11 Anello per cartongesso <i>False ceiling ring</i>	
D60 F15 F16 F19 F20		D60 Z13 Cassaforma per pavimento <i>Floor housing</i>	