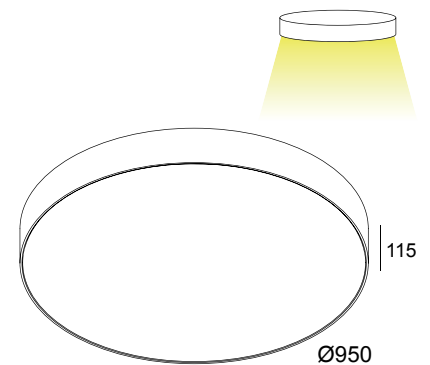


Supernova 9528 EVG DIM 1

Manual/



SUPERNOVA 9528 EVG DIM 1 ◇

274 95 9528 ED1◇

◇ = W

INCL.PC-SBL

DIMMING BY 1-10V

INCL.LEDCLUSTER 114W / 3000K / 9825 lm

INCL.2x LED POWER SUPPLY 350mA-DC DIM1
120-240V / 50-60Hz

◇ CE 12.7 IP20 0,1

OPTIONS

SUSPENSION SET 18.3m ED1

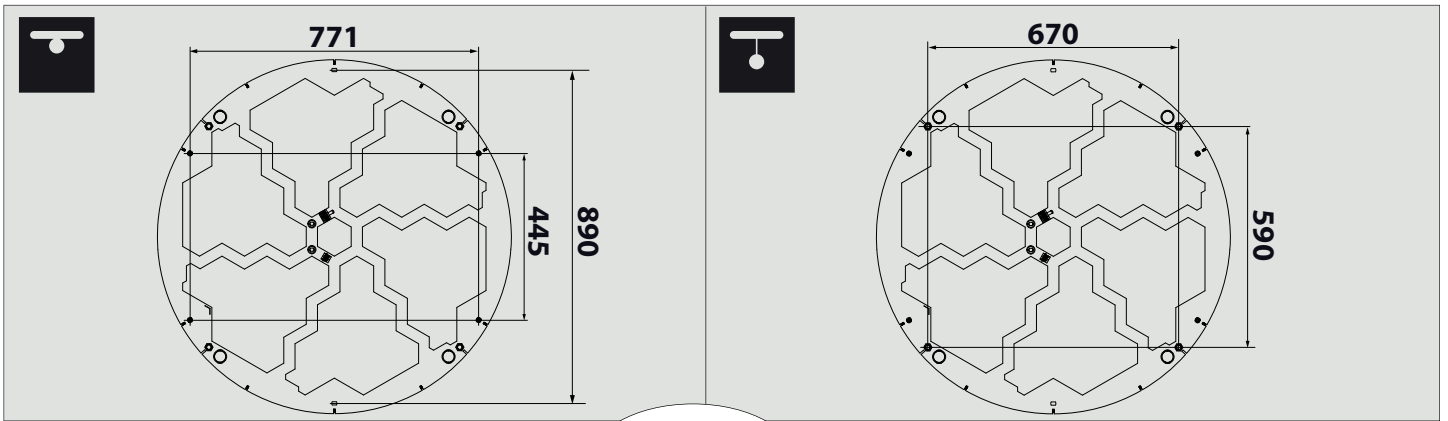
CABLE BASE R / S

COVERSET R 62-90-100 / S 62-80-90

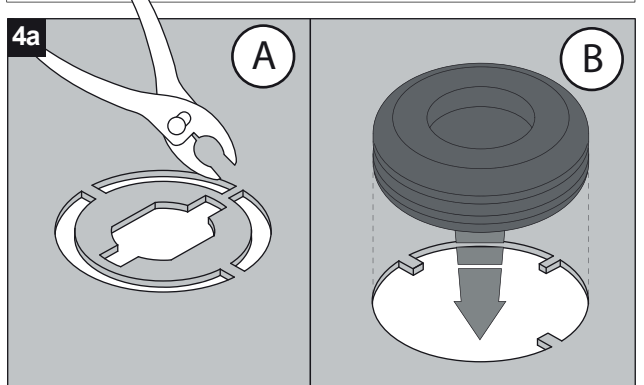
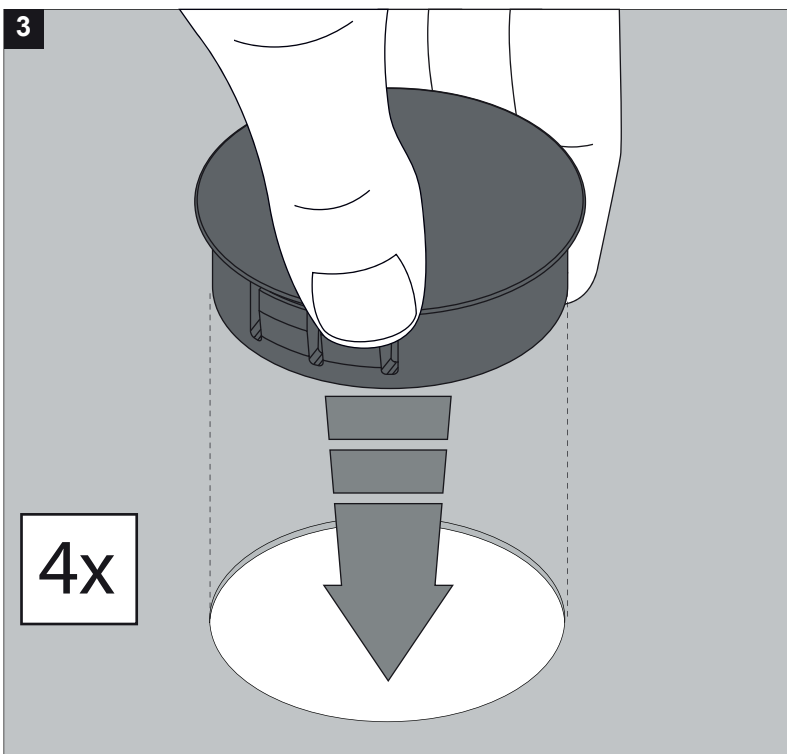
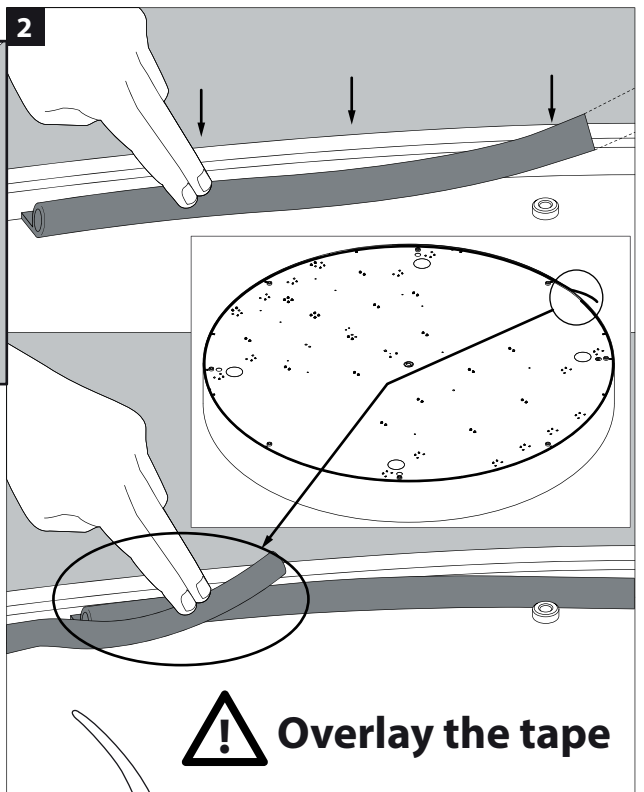
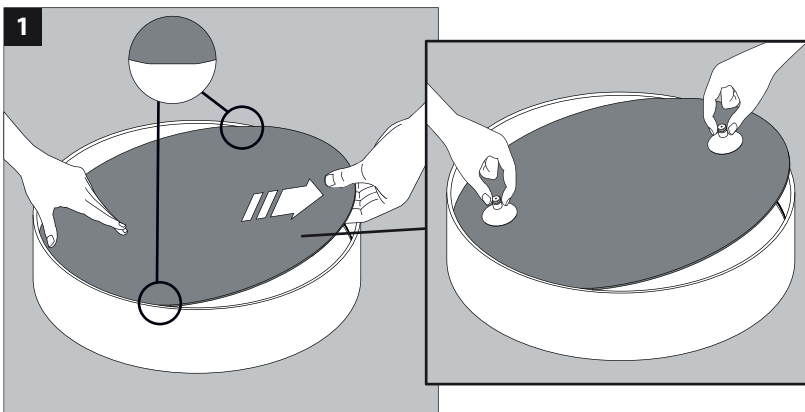
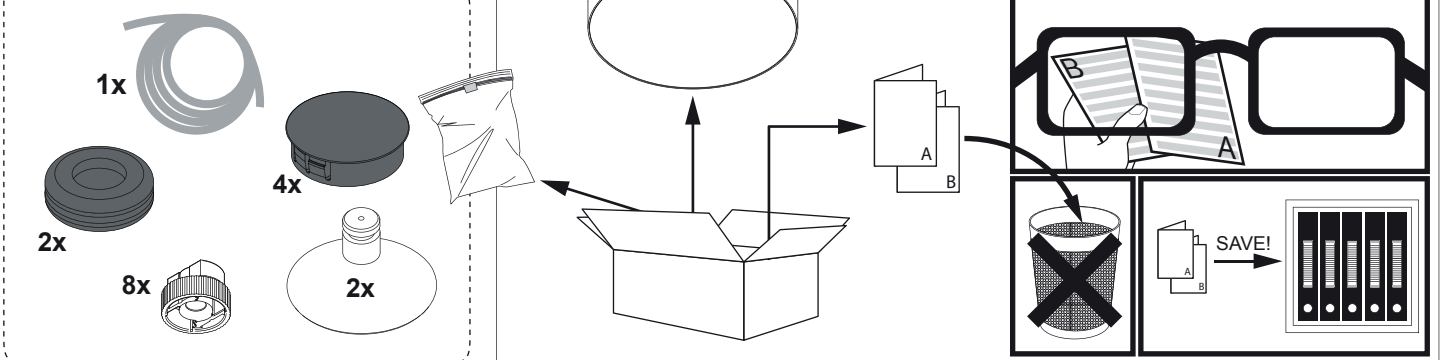
DALI CONVERTER

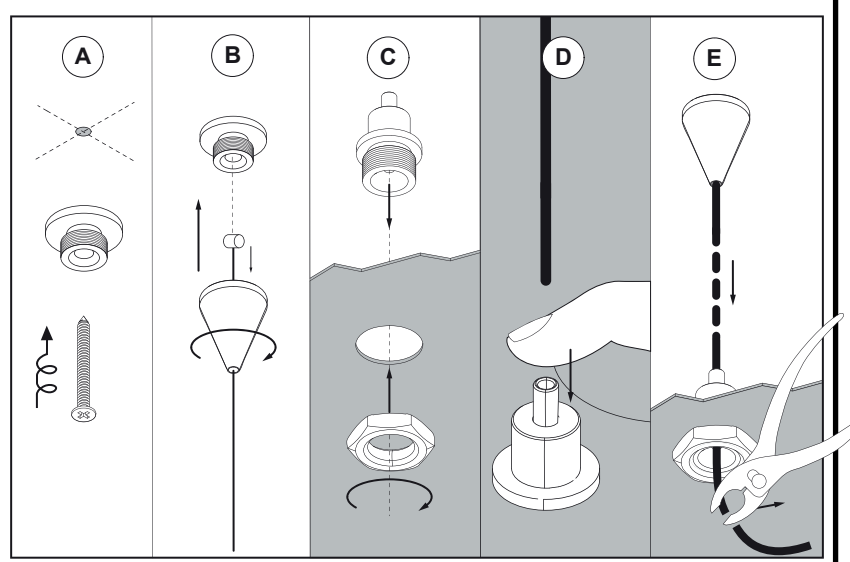
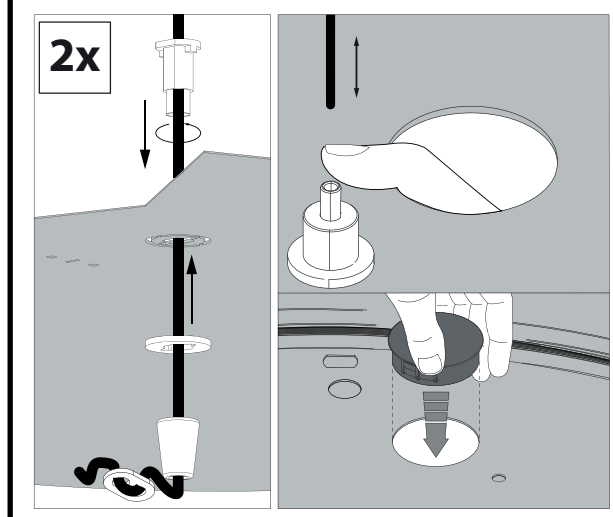
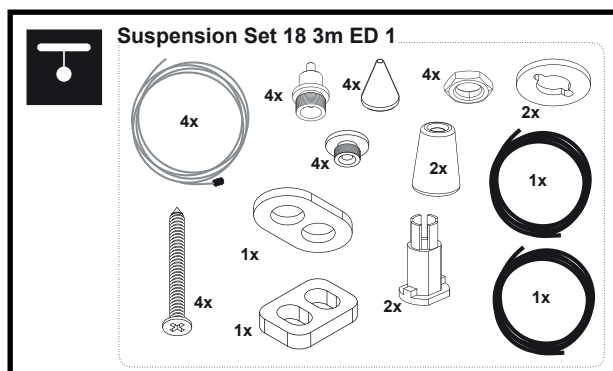
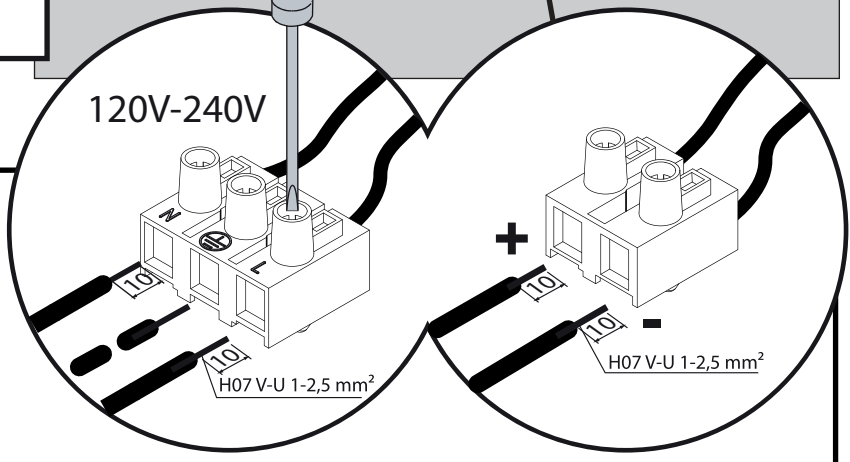
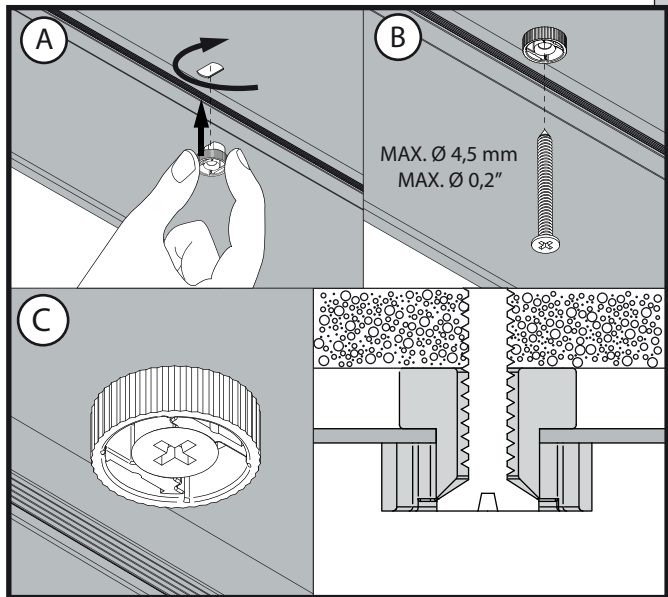
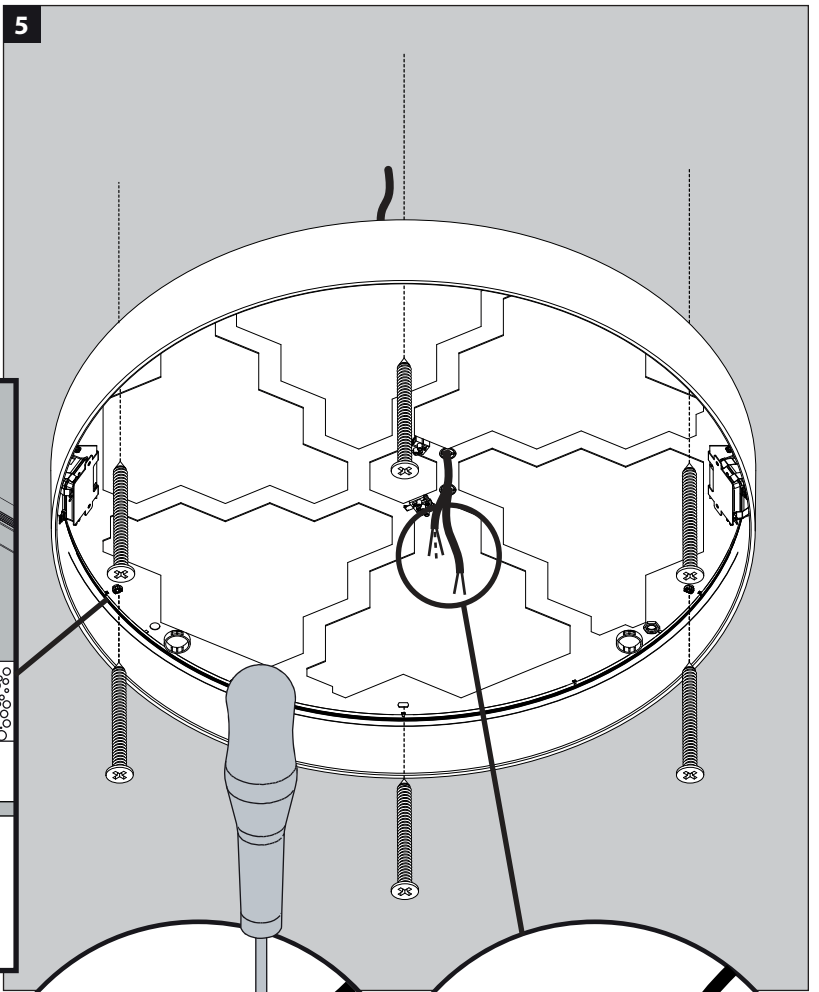
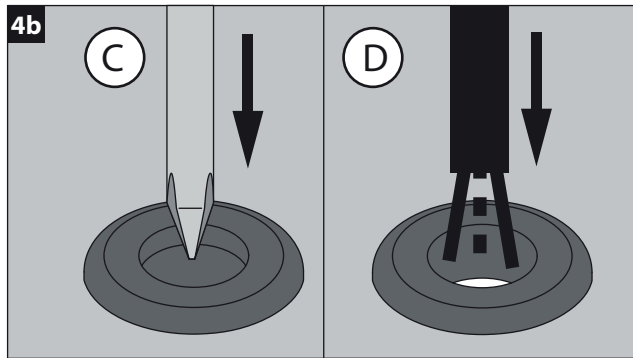
 DELTALIGHT®

CE L.L.I.B.A3
A
DEEL
PARTIE
TEIL
PART
PARTE
PARTE

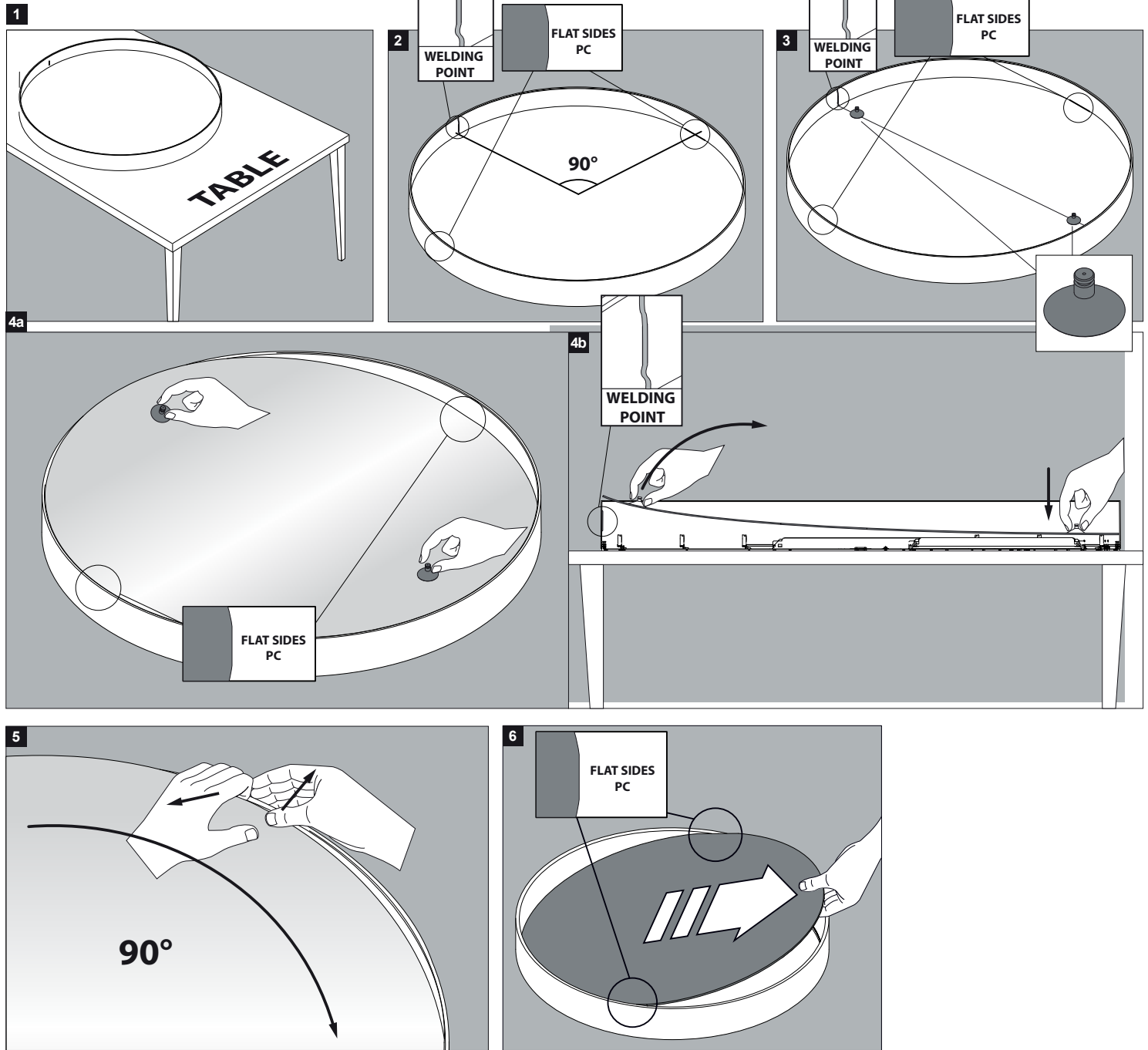


Accessory Set

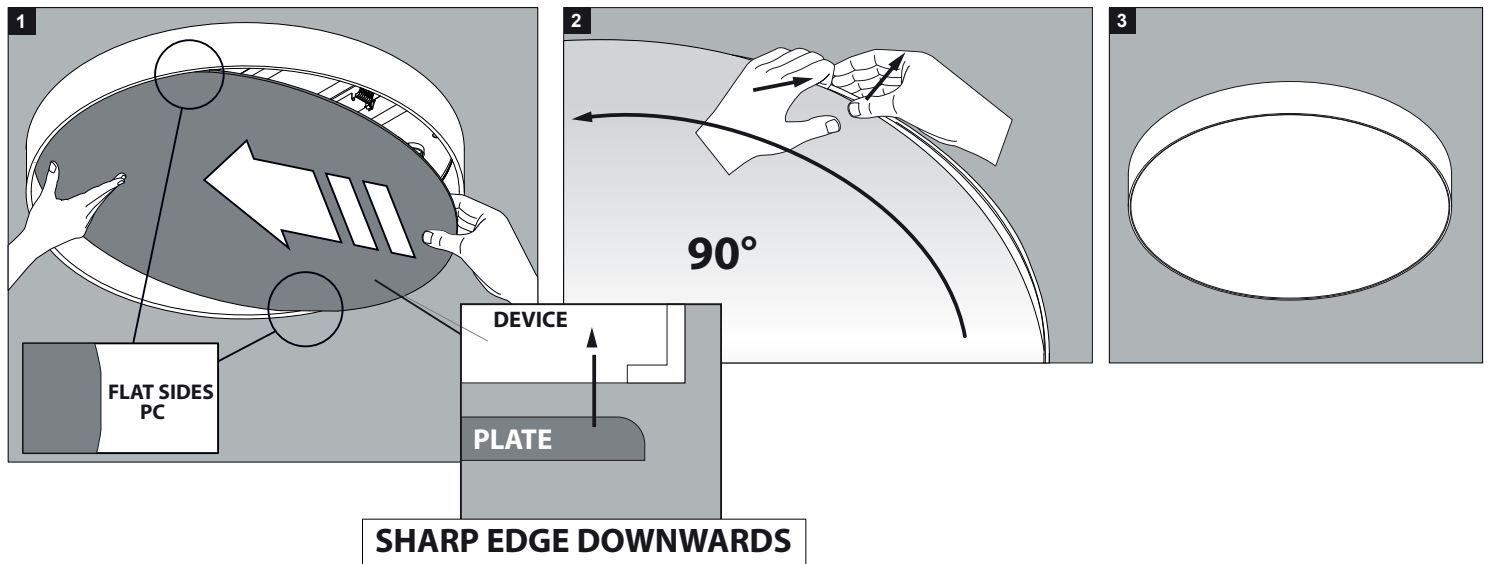


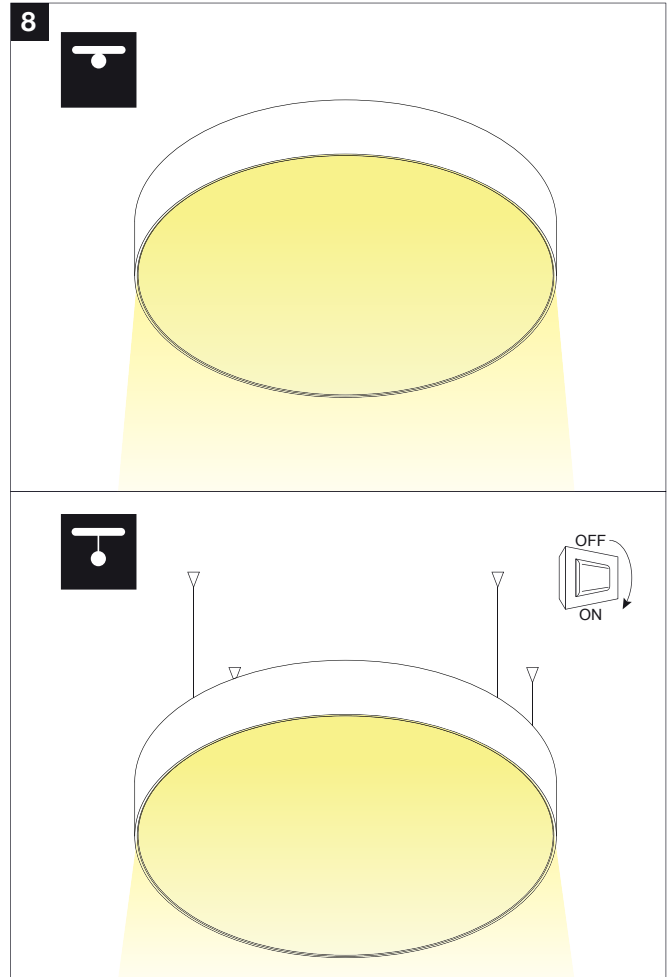
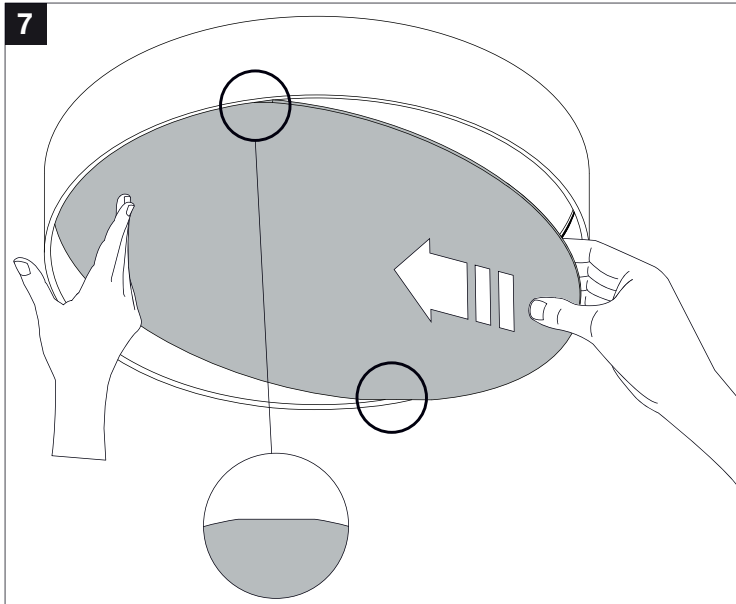


HOW TO REMOVE THE LENS?



HOW TO PUT THE LENS BACK?





SUPERNOVA 9528 EVG DIM 1



Correcte verwijdering van dit product (Elektrische & elektronische afvalapparatuur)
 Comment éliminer ce produit (Déchets d'équipements électriques et électroniques)
 Korrekte Entsorgung dieses Produkts (Elektromüll)
 Correct disposal of this product (Waste electrical & electronic equipment)
 Eliminación correcta de este producto (Material eléctrico y electrónico de descarte)
 Corretto smaltimento del prodotto (Rifiuti elettrici ed elettronici)



Gelijk- en wisselstroomtoevoer
 Alimentation DC et AC
 WS- und GS-Zufuhr
 DC and AC supply
 Alimentación de CC y CA
 Alimentazione CC/CA



Bevestiging plafond opbouw
 Montage plafond appliqué
 Montage decke aufgebaut
 Fixation ceiling surface mounted
 Montaje techo montado al superficie
 Montaggio soffitto montato a superficie



Bevestiging plafond gependeld
 Montage plafond suspendu
 Montage decke gependelt
 Fixation ceiling suspended
 Montaje techo suspendido
 Montaggio soffitto sospeso



Voorzien van aardingsaansluiting
 Avec mise à la terre
 Ausgerüstet mit Erdungsanschluss
 Provided with grounding
 Con la toma de tierra
 Con presa a terra

IP20 Beschermtd tegen vaste voorwerpen die groter zijn dan 12 mm
 Protégé contre les objets solides de plus de 12 mm
 Geschützt gegen Festkörper größer als 12 mm
 Protected against solid objects greater than 12 mm
 Protegido contra objetos sólidos superiores a 12 mm
 Protetto contro oggetti solidi più grandi di 12 mm

De verlichtingsbron van dit verlichtingstoestel zal enkel door de fabrikant of door de fabrikant aangestelde installateur vervangen worden.

La source lumière de cet appareil ne sera remplacée que par l'entrepreneur ou par un agent reconnu.

Das enthaltene Leuchtmittel sollte nur durch entsprechendes Fachpersonal ersetzt werden.

The light source contained in this luminaire shall only be replaced by the manufacturer or his service agent.

La fuente de iluminación que tiene esta luminaria sólo puede remplazarse por el fabricante o por un instalador autorizado.

La sorgente luminosa incorporata in questo apparecchio può essere sostituita solo dal produttore, da un suo centro assistenza oppure da una persona in possesso della necessaria abilitazione.