

Product data sheet

Wall luminaire

GLASHÜTTE LIMBURG
 IP 44  **8735**

Project · Reference number

Date

Application

Shielded wall luminaire for many lighting tasks in interior applications.

The light emits upwards and downwards.

The light from the lamps is distributed softly and uniformly on the installation surface and in the room.

Product description

Luminaire made of die-cast aluminium

Fitter matt brushed

Polished stainless steel shield

Hand-blown opal glass

1 fixing hole \varnothing 5 mm

1 cable entry for mains supply cable

up to \varnothing 10.5 mm max. $3 \times 1.5^{\square}$

Connecting terminal 2.5^{\square}

Earth conductor connection

Lampholder G 24 q-2

Electronic ballast

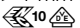
220-240 V \sim 0/50-60 Hz

Safety class I

Protection class IP 44

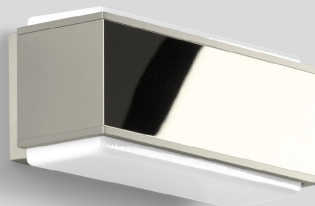
Protected against granular foreign bodies

> 1 mm and splash water

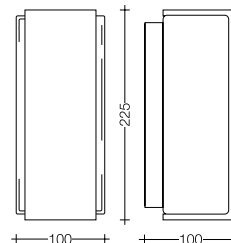
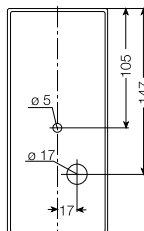
 – Safety mark

 – Conformity mark

Weight: 1.3 kg



www.glashuette-limburg.com

**Lamp**

Compact fluorescent lamp

TC-DEL 18 W · G 24 q-2

Osram: Dulux D/E 18 W

1200 lm

Philips: PL-C 18 W/4p

1200 lm

Please note the lamp manufacturers' operating instructions.