

GLASHÜTTE LIMBURG**Product data sheet****Ceiling and wall luminaire**IP 44 **89 016**

Project · Reference number

Date

Application

Ceiling and wall luminaire made of hand-blown opal glass, satin matt and metal housing, for all lighting tasks in interior applications.

They are ideal for places where a soft and uniform lighting distribution is required. Luminaire with a high protection class.

Product description

Aluminium alloy housing,
finish white enamel

Hand-blown opal glass, satin matt

2 fixing holes \varnothing 5 mm

90 mm spacing

1 cable entry for mains supply cable

up to \varnothing 10.5 mm max. 3 x 1.5²

Connecting terminal 2.5²

Earth conductor connection

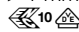
Lampholder E 14


Safety class I

Protection class IP 44

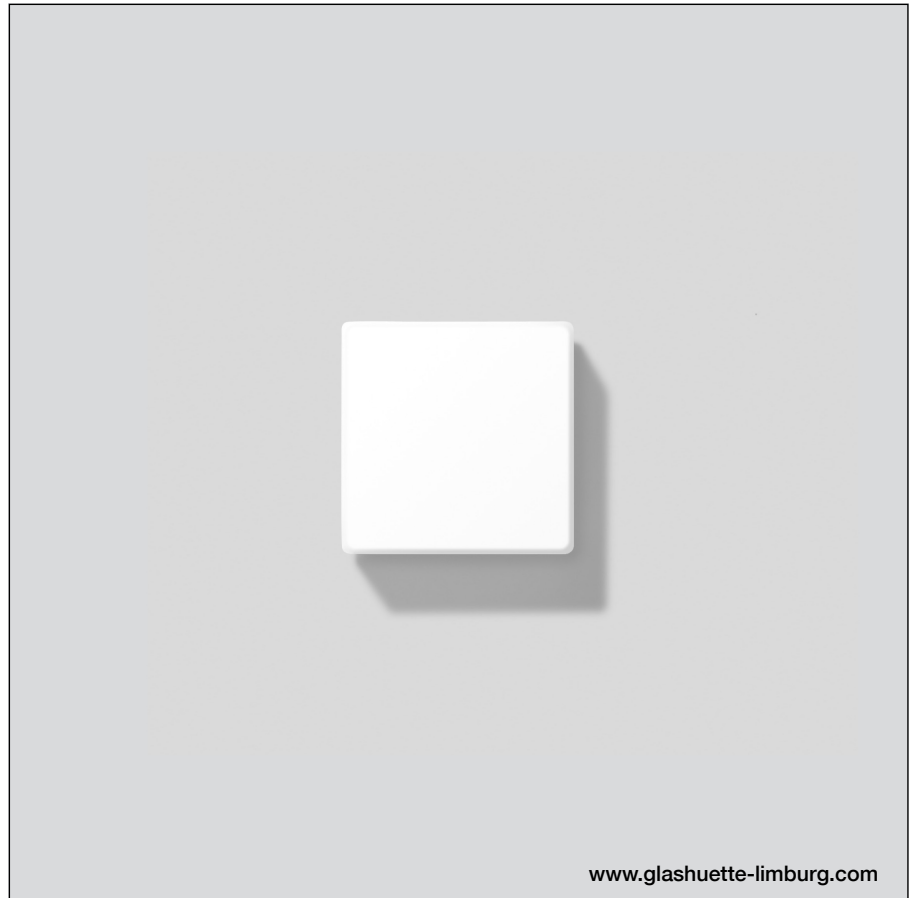
Protected against granular foreign bodies

> 1 mm and splash water

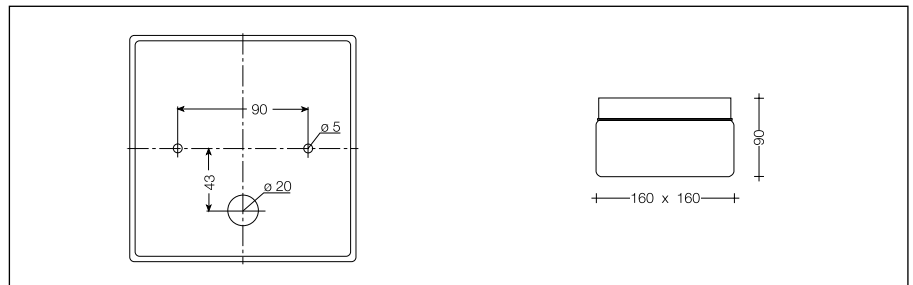
 – Safety mark

 – Conformity mark

Weight: 0.9 kg



www.glashuette-limburg.com

**Lamp**

Luminaire with lampholder E 14

Lamp wattage max. 1 x 40 W

High voltage tungsten halogen lamp QD 45 ·
E 14

Osram: Eco Pro Classic 30 W 405 lm

Philips: Eco Classic 28 W P45 370 lm

Please note the lamp manufacturers' operating instructions.