

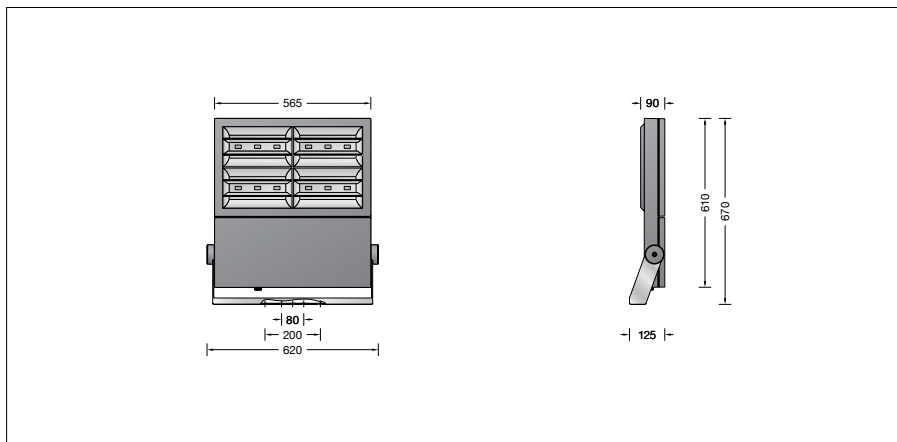
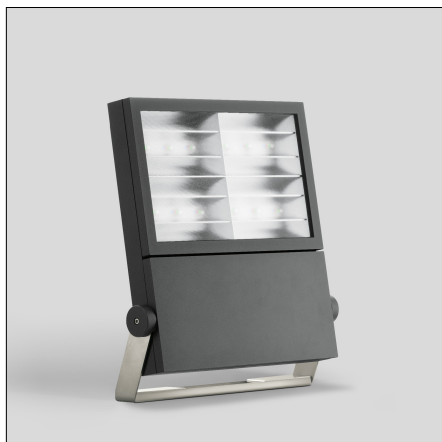
BEGA**84 532**

High-performance floodlight RGBW



Project · Reference number

Date



Product data sheet

Application

LED high-performance floodlight with flat beam light distribution for additive colour mixing RGBW. The floodlight can be controlled by DALI colour light control (DT8, RGBWAF, xy). We recommend our BEGA Control system for this purpose. For a variety of interior and exterior lighting applications.

Product description

Floodlight made of aluminium alloy, aluminium and stainless steel
 Safety glass with optical structure
 Silicone gasket
 Reflector made of pure anodised aluminium
 Swivel range 180°
 Mounting bracket made of stainless steel
 Steel grade no. 1.4301 with
 1 central drilling ø 22 mm and
 2 fixing holes ø 9 mm · 80 mm spacing
 2 fixing holes ø 11.5 mm · 200 mm spacing
 2 screw cable glands with strain relief for through-wiring of the mains supply cable from ø 7,5-15 mm
 1 screw cable gland closed at the factory with a dummy plug
 Connecting terminal and earth conductor terminal 2.5[□]
 Integrated changeover switch for the manual limitation of the luminous flux or power reduction via connected control cable with three adjustable outputs of 70 % · 50 % · 30 %
 LED power supply unit
 220-240 V ~ 0/50-60 Hz
 DC 176-264 V
 During DC operation the LED power is reduced to 50 %
 DALI controllable
 A basic isolation exists between power cable and control line
 Safety class I
 Protection class IP 67
 Dust-tight and protection against temporary immersion
 Impact strength IK08
 Protection against mechanical impacts < 5 joule
 – Safety mark
 – Conformity mark
 Wind catching area: 0.38 m²
 Weight: 24.9 kg

Lamp

Module connected wattage 338 W
 Luminaire connected wattage 382 W
 Rated temperature $t_a = 25\text{ °C}$
 Ambient temperature $t_{a\text{ max}} = 30\text{ °C}$

Module designation 4x LED-0801/RGBW
 Luminaire luminous flux 22589 lm
 Luminaire luminous efficiency 59,1 lm/W

Service life · Ambient temperature

Rated temperature $t_a = 25\text{ °C}$
 LED psu: > 50,000 h
 LED module: 160,000 h (L 80 B 50)
 100,000 h (L 80 B 50)

Ambient temperature $t_{a\text{ max}} = 30\text{ °C}$ (100 %)
 LED psu: 50,000 h
 LED module: 150,000 h (L 80 B 50)
 100,000 h (L 80 B 50)

Light technique

Floodlight with flat beam light distribution.
 Half beam angle 25/79°
 Luminaire data for the light planning program DIALux for outdoor lighting, street lighting and indoor lighting, as well as luminaire data in EULUMDAT and IES format are available on the BEGA website at www.bega.com.

Accessories

Mounting box and mounting base for permanent mounting of floodlights on pillars, walls and ceilings

70 225 Mounting box IP 65
70 348 Mounting box IP 55
70 208 Mounting base h = 120 mm

Pole caps for mounting a floodlight on a pole
70 342 Pole cap for ø 76 mm
70 343 Pole cap for ø 89 mm

Cross beams for floodlights for mounting on walls, under ceilings or on the floor
70 761 Cross beam for 3 floodlights

71 102 Shield

The shield can be screwed on and prevents lateral glare from one direction up to an angle of 45°.

71 103 Louvre

The internal louvre prevents looking from a lateral angle up to 45° into the luminaire from all directions.

For the accessories a separate instructions for use can be provided upon request.