

BEGA**84 057**

Pole top luminaire



Project · Reference number

Date

Product data sheet

Application

LED pole-top luminaire with symmetrical light distribution.

For mounting heights 3500 - 5000 mm.

Product description

Luminaire made of aluminium alloy, aluminium and stainless steel
 Clear synthetic cover with optical structure
 Silicone gasket
 Reflector made of pure anodised aluminium
 For pole top \varnothing 76 mm
 Slip fitter insert depth 60 mm
 Connecting cable X05BQ-F 5 G 1[□]
 Cable length 5 m
 LED power supply unit
 220-240 V \sim 0/50-60 Hz
 DC 176-264 V
 During DC operation the LED power is reduced to 50 %
 DALI controllable
 A basic isolation exists between power cable and control line
 Safety class I
 Protection class IP 65
 Dust-tight and protection against water jets
 – Safety mark
 – Conformity mark
 Horizontal wind catching area: 0.06 m²
 Weight: 4.7 kg

Inrush current

Inrush current: 5 A / 100 μ s
 Maximum number of luminaires of this type per miniature circuit breaker:
 B10A: 27 luminaires
 B16A: 44 luminaires
 C10A: 27 luminaires
 C16A: 44 luminaires

Accessories

For this luminaire we recommend the following BEGA luminaire poles:

Tapered aluminium poles, lacquered with access door and C-clamp

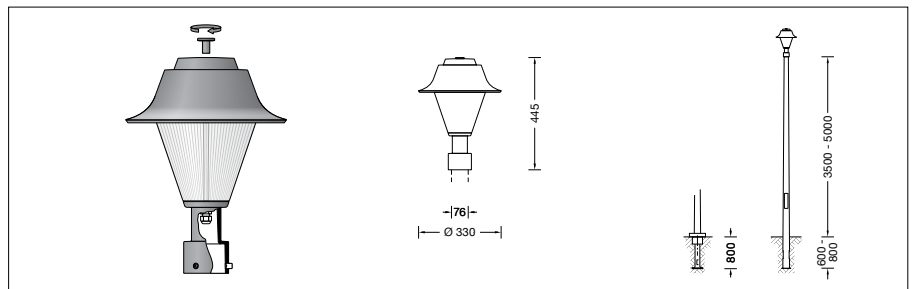
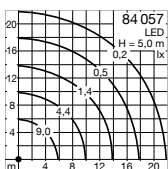
70 913 Pole with anch.section	H 3500 mm
70 914 Pole with anch.section	H 4000 mm
70 725 Pole with anch.section	H 4500 mm
70 915 Pole with anch.section	H 5000 mm
70 789 Pole with baseplate	H 3500 mm
70 791 Pole with baseplate	H 4000 mm
70 792 Pole with baseplate	H 4500 mm
70 794 Pole with baseplate	H 5000 mm

Cylindrically stepped aluminium poles, lacquered with door und C rail

70 901 Pole with anch.section	H 4000 mm
70 903 Pole with anch.section	H 5000 mm
70 900 Pole with baseplate	H 4000 mm
70 902 Pole with baseplate	H 5000 mm

For suitable connection boxes please see the instructions for use of the luminaire poles.

Light distribution



Lamp

Module connected wattage	35.2 W
Luminaire connected wattage	38.5 W
Rated temperature	$t_a = 25^\circ\text{C}$
Ambient temperature	$t_{a\text{max}} = 35^\circ\text{C}$

84 057 K3

Module designation	LED-0770/830
Colour temperature	3000 K
Colour rendering index	CRI > 80
Module luminous flux	6675 lm
Luminaire luminous flux	4353 lm
Luminaire luminous efficiency	113,1 lm/W

Service life of the LED

Ambient temperature $t_a = 25^\circ\text{C}$	– at > 500,000 h: L70B50
max. ambient temperature $t_a = 35^\circ\text{C}$	– at 306,000 h: L70B50

Ambient temperature $t_{a\text{max}} = 50^\circ\text{C}$ (80 %)	LED psu: 50,000 h
	LED module: 50,000 h

BEGA Thermal Control® protects temperature-sensitive luminaire components by temporarily limiting the nominal power at high temperatures.

Light technique

Luminaire data for the light planning program DIALux for outdoor lighting, street lighting and indoor lighting as well as luminaire data in EULUMDAT- and IES-format you will find on the BEGA web page www.bega.com.