

BEGA**84 037**

Pole top luminaire



Project · Reference number

Date

Product data sheet

Application

LED pole top luminaire with symmetrical light distribution.

For lighting paths and parks in private or public sectors.

A luminaire distinguished by its high corrosion resistance.

For mounting heights 1700 - 2000 mm.

Product description

Luminaire made of copper,

brass and stainless steel

Opal glass with screw neck

Silicone gasket

Mounting bush G 1/2 · ISO 228

Connecting cable H05VV-F 3G1[□]

Cable length 2 m

LED power supply unit

220-240 V ~ 0/50-60 Hz

DC 176-264 V

Safety class I

Protection class IP 65

Dust-tight and protection against water jets

Impact strength IK06

Protection against mechanical

impacts < 1 joule

– Safety mark

– Conformity mark

Weight: 4.3 kg

Inrush current

Inrush current: 7 A / 112 μs

Maximum number of luminaires of this type per miniature circuit breaker:

B 10A: 38 luminaires

B 16A: 61 luminaires

C 10A: 64 luminaires

C 16A: 102 luminaires

Copper

The luminaire parts made of solid copper are delivered with the metal's natural surface colour. Time and weather factors create the natural patina characteristic for copper.

Accessories

For this luminaire we recommend the following BEGA luminaire poles:

Cylindrical poles made of raw copper and baseplate made of cast bronze, without access door

70552 Pole with baseplate H 1700 mm

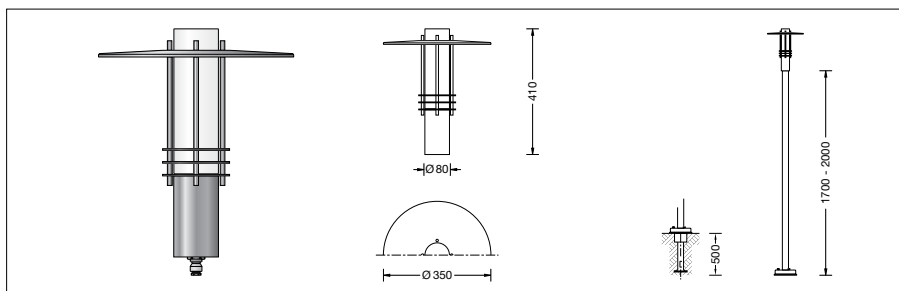
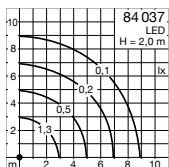
70550 Pole with baseplate H 2000 mm

70553 Pole with baseplate H 2000 mm

For suitable connection boxes please see the instructions for use of the luminaire poles.

For the accessories a separate instructions for use can be provided upon request.

Light distribution



Lamp

Module connected wattage

3.8 W

Luminaire connected wattage

4.9 W

Rated temperature

$t_a = 25 \text{ }^\circ\text{C}$

Ambient temperature

$t_{a \text{ max}} = 45 \text{ }^\circ\text{C}$

On request we can offer you modifications for environments with higher temperatures as a customized product.

84 037 K3

Module designation

2x LED-0253/830

Colour temperature

3000 K

Colour rendering index

CRI > 80

Module luminous flux

740 lm

Luminaire luminous flux

449 lm

Luminaire luminous efficiency

91,6 lm/W

Service life of the LED

Ambient temperature $t_a = 25 \text{ }^\circ\text{C}$

– at > 500,000h: L70 B50

max. ambient temperature $t_a = 45 \text{ }^\circ\text{C}$

– at 260,000h: L70 B50

Light technique

Luminaire data for the light planning program DIALux for outdoor lighting, street lighting and indoor lighting as well as luminaire data in EULUMDAT- and IES-format you will find on the BEGA web page www.bega.com.