

**BEGA****77 559**

Floodlight



Project · Reference number

Date



## Product data sheet

### Application

LED floodlight for broad spread light distribution. Floodlight with mounting box and outrigger arm for installation on ceilings and walls in interior and exterior application.

The adjustability of the outrigger arm allows a variety of burning positions with which most diverse lighting tasks can be solved. The used LED technique offers durability and optimal light output with low power consumption at the same time.

### Product description

Luminaire made of aluminium alloy, aluminium and stainless steel  
Safety glass with optical structure  
Silicone gasket

Adjustment range:

Joint - mounting box:  $\pm 75^\circ$  in steps of  $15^\circ$

Swivel joint - outrigger arm:  $\pm 165^\circ$

Floodlight housing:  $+120^\circ / -75^\circ$  infinitely adjustable

Mounting box with 2 fixing holes

$\varnothing 6.3$  mm · 62 x 210 mm spacing

2 cable entries for through-wiring of mains

supply cable  $\varnothing 7-10.5$  mm, max. 5G 1.5<sup>□</sup>

Connection terminal 2.5<sup>□</sup>

Earth conductor connection

LED power supply unit

220-240 V  $\sim$  0/50-60 Hz

DC 176-264 V

During DC operation the LED power

is reduced to 50 %

DALI controllable

A basic isolation exists between power cable and control line

Safety class I

Protection class IP 65

Dust-tight and protection against water jets

Impact strength IK08

Protection against mechanical

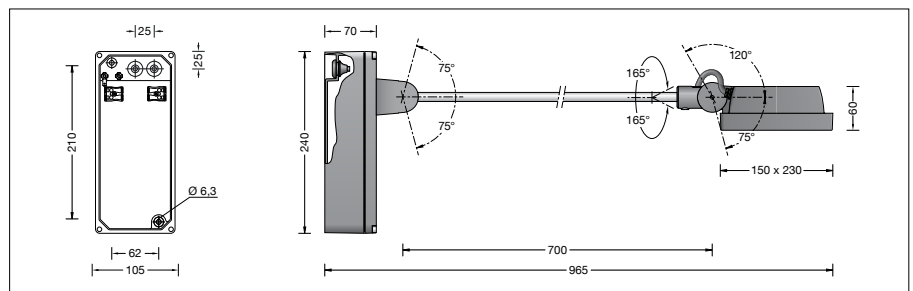
impacts < 5 joule

– Safety mark

– Conformity mark

Wind catching area: 0.06 m<sup>2</sup>

Weight: 3.5 kg



### Lamp

Module connected wattage

27.6 W

Luminaire connected wattage

30.7 W

Rated temperature

$t_a = 25^\circ\text{C}$

Ambient temperature

$t_{a\text{max}} = 60^\circ\text{C}$

On request we can offer you modifications for environments with higher temperatures as a customized product.

### Inrush current

Inrush current: 5 A / 100  $\mu\text{s}$

Maximum number of luminaires of this type per miniature circuit breaker:

B 10A: 27 luminaires

B 16A: 44 luminaires

C 10A: 27 luminaires

C 16A: 44 luminaires

### Light technique

Broad spread light distribution.

Half beam angle 92/97<sup>°</sup>

Luminaire data for the light planning program

DIALux for outdoor lighting, street lighting and indoor lighting, as well as luminaire data in EULUMDAT and IES format are available on the BEGA website at [www.bega.com](http://www.bega.com).

### Article No. 77 559

LED colour temperature optionally 4000 K

or 3000 K

4000 K – Article number + **K4**

3000 K – Article number + **K3**

Colour optionally graphite, white or silver

Graphite – Article number

White – Article number + **W**

Silver – Article number + **A**

### Accessories

**70 502** Shield

The attachable shield screens the light upwards or downwards.

A separate instructions for use can be provided upon request.

### 77 559 K4

Module designation

LED-0935/940

Colour temperature

4000 K

Colour rendering index

CRI > 90

Module luminous flux

4395 lm

Luminaire luminous flux

3560 lm

Luminaire luminous efficiency

116 lm/W

### 77 559 K3

Module designation

LED-0935/930

Colour temperature

3000 K

Colour rendering index

CRI > 90

Module luminous flux

4260 lm

Luminaire luminous flux

3451 lm

Luminaire luminous efficiency

112,4 lm/W

### Lifetime of the LED

Ambient temperature  $t_a = 25^\circ\text{C}$

– at > 500,000 h: L 70 B 50

max. ambient temperature  $t_a = 60^\circ\text{C}$

– at 87,000 h: L 70 B 50

### Light distribution

