

BEGA**77 558**

Floodlight



Project · Reference number

Date



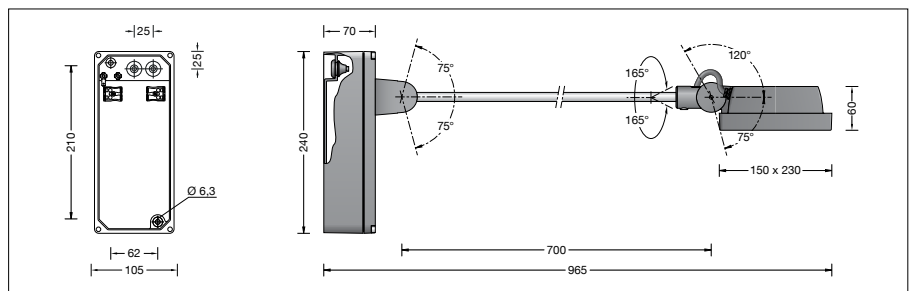
Product data sheet

Application

LED floodlight for flat beam light distribution. Floodlight with mounting box and outrigger arm for installation on ceilings and walls in interior and exterior application. The adjustability of the outrigger arm allows a variety of burning positions with which most diverse lighting tasks can be solved.

Product description

Luminaire made of aluminium alloy, aluminium and stainless steel
 Safety glass with optical structure
 Silicone gasket
 Adjustment range:
 Joint - mounting box: $\pm 75^\circ$ in steps of 15°
 Swivel joint - outrigger arm: $\pm 165^\circ$
 Floodlight housing: $+120^\circ / -75^\circ$ infinitely adjustable
 Mounting box with 2 fixing holes
 $\varnothing 6.3$ mm · 62 x 210 mm spacing
 2 cable entries for through-wiring of mains supply cable $\varnothing 7$ -10.5 mm, max. 5G 1.5[□]
 Connection terminal 2.5[□]
 Earth conductor connection
 LED power supply unit
 220-240 V \sim 0/50-60 Hz
 DC 176-264 V
 During DC operation the LED power is reduced to 50 %
 DALI controllable
 A basic isolation exists between power cable and control line
 Safety class I
 Protection class IP 65
 Dust-tight and protection against water jets
 Impact strength IK08
 Protection against mechanical impacts < 5 joule
 - Safety mark
 - Conformity mark
 Wind catching area: 0.06 m²
 Weight: 3.5 kg



Lamp

Module connected wattage 27.6 W
 Luminaire connected wattage 30.7 W
 Rated temperature $t_a = 25^\circ\text{C}$
 Ambient temperature $t_{a\text{max}} = 60^\circ\text{C}$

77 558 K4

Module designation LED-0935/940
 Colour temperature 4000 K
 Colour rendering index CRI > 90
 Module luminous flux 4395 lm
 Luminaire luminous flux 3460 lm
 Luminaire luminous efficiency 112,7 lm/W

77 558 K3

Module designation LED-0935/930
 Colour temperature 3000 K
 Colour rendering index CRI > 90
 Module luminous flux 4260 lm
 Luminaire luminous flux 3353 lm
 Luminaire luminous efficiency 109,2 lm/W

Service life of the LED

Ambient temperature $t_a = 25^\circ\text{C}$
 - at > 500,000h: L70B50

max. ambient temperature $t_a = 60^\circ\text{C}$
 - at 87,000h: L70B50

Inrush current

Inrush current: 5 A / 100 μs
 Maximum number of luminaires of this type per miniature circuit breaker:
 B 10A: 27 luminaires
 B 16A: 44 luminaires
 C 10A: 27 luminaires
 C 16A: 44 luminaires

Light technique

Floodlight with flat beam light distribution. Half beam angle 40/96°
 Luminaire data for the light planning program DIALux for outdoor lighting, street lighting and indoor lighting, as well as luminaire data in EULUMDAT and IES format are available on the BEGA website at www.bega.com.

Article No. 77 558

LED colour temperature optionally 4000 K or 3000 K
 4000 K – Article number + **K4**
 3000 K – Article number + **K3**

Colour optionally graphite, white or silver
 Graphite – Article number
 White – Article number + **W**
 Silver – Article number + **A**

Accessories

70 502 Shield
 The attachable shield screens the light upwards or downwards.

A separate instructions for use can be provided upon request.

Light distribution

