

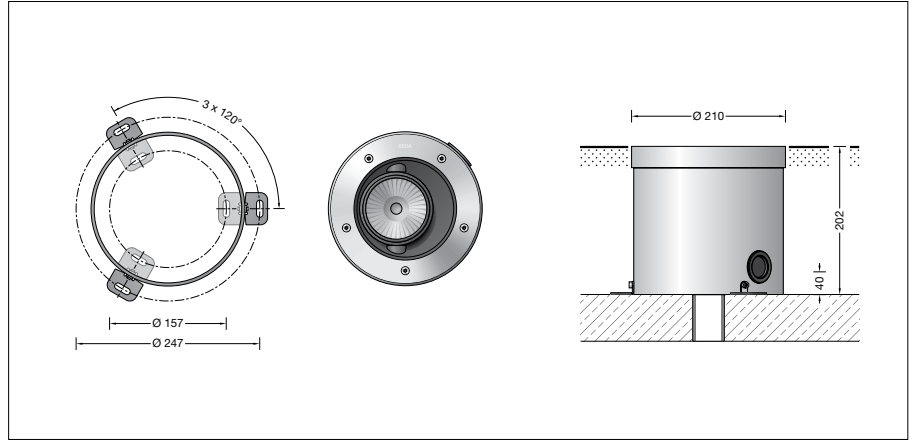
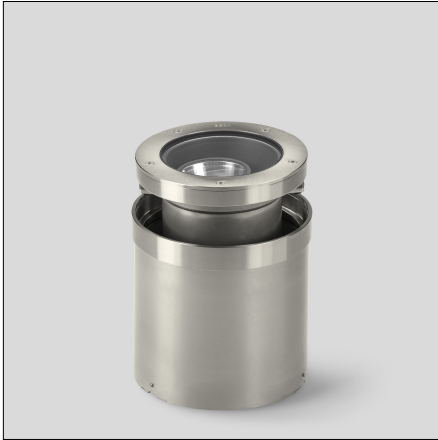
BEGA**77 074**

In-ground luminaire



Project · Reference number

Date



Product data sheet

Application

Heavy-duty in-ground LED floodlight with adjustable light distribution for flush-mounting installation in compacted surfaces, paths and open areas. Drive-over luminaire for vehicles with pneumatic tyres.

Luminaire made of stainless steel and cast stainless steel, characterised by extremely high pressure load of 5,000 kg (49 kN).

– BEGA patent EP 2418419 –

For walk-through public areas, we recommend skid-blocking glass – see accessories.

Product description

Luminaire made of cast stainless steel and stainless steel

Steel grade number 1.4301

Clear safety glass

Reflector made of pure anodised aluminium

1,8 m water-resistant connecting cable

07RN8-F 5G1[□] with implemented water stopper and 1.2 m PVC cable conduit

LED power supply unit

220-240 V ~ 0/50-60 Hz

DC 176-280 V

DALI controllable

A basic isolation exists between power cable and control line

Safety class I

Protection class IP 68 10 m

Dust-tight and water pressure tight

Maximum submersion depth 10 m

Pressure load 5,000 kg (49 kN)

Impact strength IK10

Protection against mechanical impacts < 20 joule

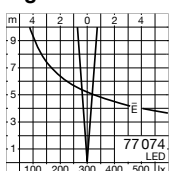
Maximum surface temperature 30 °C

(measured according to EN 60598 of $t_a = 15\text{ °C}$)

CE – Conformity mark

– Safety mark

Weight: 7.4 kg

Light distribution**Lamp**

Module connected wattage	9.2 W
Luminaire connected wattage	11 W
Rated temperature	$t_a = 25\text{ °C}$
Ambient temperature	$t_{a,max} = 30\text{ °C}$

On request we can offer you modifications for environments with higher temperatures as a customized product.

77 074 K4

Module designation	LED-0578/940
Colour temperature	4000 K
Colour rendering index	CRI > 90
Module luminous flux	1160 lm
Luminaire luminous flux	620 lm
Luminaire luminous efficiency	56,4 lm/W

77 074 R K4

Module designation	LED-0578/940
Colour temperature	4000 K
Colour rendering index	CRI > 90
Module luminous flux	1160 lm
Luminaire luminous flux	441 lm
Luminaire luminous efficiency	40,1 lm/W

77 074 K3

Module designation	LED-0578/930
Colour temperature	3000 K
Colour rendering index	CRI > 90
Module luminous flux	1125 lm
Luminaire luminous flux	601 lm
Luminaire luminous efficiency	54,6 lm/W

77 074 R K3

Module designation	LED-0578/930
Colour temperature	3000 K
Colour rendering index	CRI > 90
Module luminous flux	1125 lm
Luminaire luminous flux	405 lm
Luminaire luminous efficiency	36,8 lm/W

Service life of the LED

Ambient temperature $t_a = 25\text{ °C}$	
– at 250,000h: L70B50	

max. ambient temperature $t_a = 30\text{ °C}$

– at 225,000h: L70B50

Inrush current

Inrush current: 5 A / 50 μ s
Maximum number of luminaires of this type per miniature circuit breaker:

B 10A: 31 luminaires

B 16A: 50 luminaires

C 10A: 52 luminaires

C 16A: 85 luminaires

Light technique

Recessed luminaire with adjustable optical system.

Optical system 0-30° swivel-mounted and $\pm 180^\circ$ infinitely rotatable.

Narrow beam rotationally symmetrical light distribution. Half beam angle 10°

Luminaire data for the light planning program DIALux for outdoor lighting, street lighting and indoor lighting, as well as luminaire data in EULUMDAT and IES format are available on the BEGA website at www.bega.com.

Article No. 77 074

LED colour temperature optionally 4000K or 3000K

4000 K – Article number + **K4**

3000 K – Article number + **K3**

We supply this luminaire with skid-blocking glass which is denoted by **R** after the article number.

Accessories

70 271 Diffuser lens wide beam

70 272 Diffuser lens flat beam

Distribution box for installation in soil

70 730 Distribution box with 7 cable entries

Connection terminals 5 x 4[□]

71 053 Distribution box with 10 cable entries

Connection terminals 6 x 16[□]