

**BEGA****77 073**

In-ground luminaire

 IP 68

Project · Reference number


Date

## Product data sheet

### Application

LED location luminaire for flush installation in ground surfaces. Drive-over luminaire for vehicles with pneumatic tyres. Luminaire made of stainless steel and cast stainless steel, characterised by extremely high pressure load of 5,000 kg (49 kN).  
 – BEGA patent EP 2418419 –  
 For walk-through public areas, we recommend skid-blocking glass  
 – see accessories.

### Product description

Luminaire made of cast stainless steel and stainless steel  
 Steel grade number 1.4301  
 Safety glass, white  
 1,8 m water-resistant connecting cable 07RN8-F 5G1<sup>□</sup> with implemented water stopper and 1.2 m PVC cable conduit  
 LED power supply unit  
 220-240 V  $\approx$  0/50-60 Hz  
 DC 176-276 V  
 DALI controllable  
 A basic isolation exists between power cable and control line  
 Safety class I  
 Protection class IP 68 10 m  
 Dust-tight and water pressure tight  
 Maximum submersion depth 10 m  
 Not suitable for permanent operation under water  
 Pressure load 5,000 kg (49 kN)  
 Impact strength IK10  
 Protection against mechanical impacts < 20 joule  
 Maximum surface temperature 30 °C (measured according to EN 60598 of ta 15 °C)  
**CE** – Conformity mark  
 – Safety mark  
 Weight: 12.7 kg

### Inrush current

Inrush current: 4 A / 30  $\mu$ s  
 Maximum number of luminaires of this type per miniature circuit breaker:  
 B10A: 50 luminaires  
 B16A: 50 luminaires  
 C10A: 50 luminaires  
 C16A: 50 luminaires

### Lamp

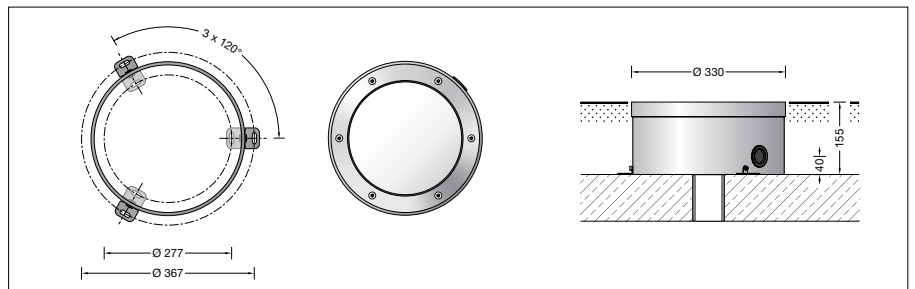
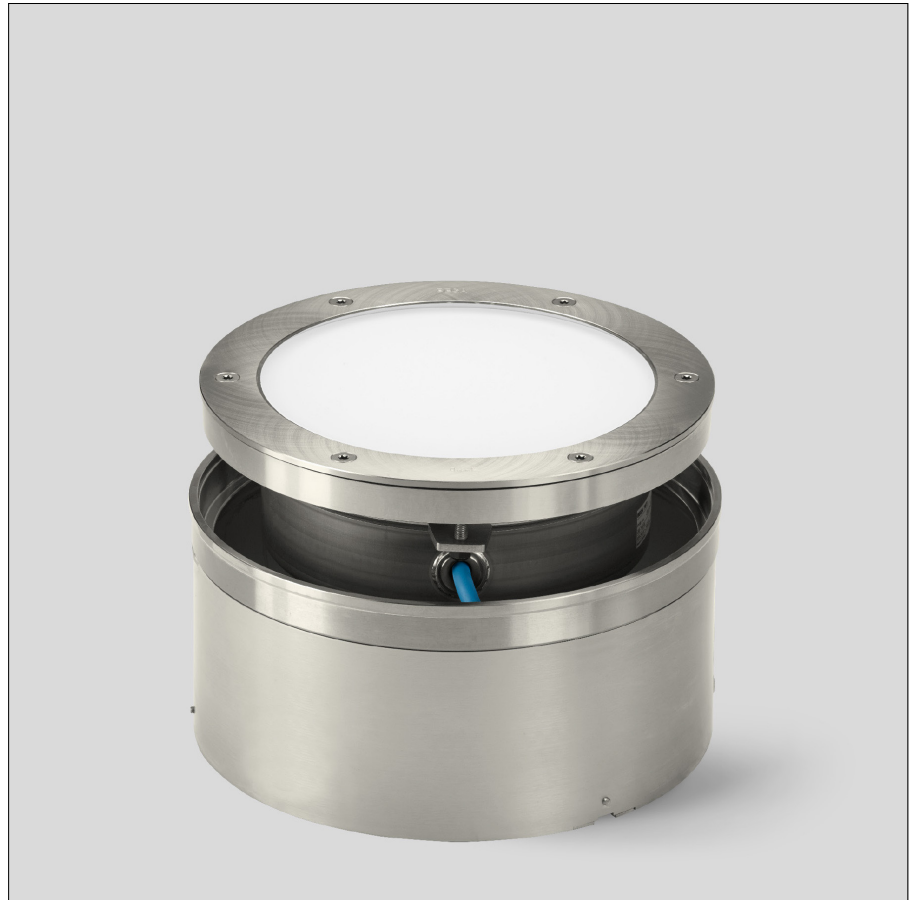
Module connected wattage	7.3 W
Luminaire connected wattage	9 W
Rated temperature	$t_a = 25$ °C
Ambient temperature	$t_{a \max} = 55$ °C
When installed in heat-insulating material	$t_{a \max} = 50$ °C

### 77 073 K4

Module designation	LED-0381/940
Colour temperature	4000 K
Colour rendering index	CRI > 90
Module luminous flux	1335 lm
Luminaire luminous flux	654 lm
Luminaire luminous efficiency	72,7 lm/W

### 77 073 K3

Module designation	LED-0381/930
Colour temperature	3000 K
Colour rendering index	CRI > 90
Module luminous flux	1260 lm
Luminaire luminous flux	600 lm
Luminaire luminous efficiency	66,7 lm/W



### Service life of the LED

Ambient temperature  $t_a = 25$  °C  
 – at > 500,000h: L70B50

max. ambient temperature  $t_a = 55$  °C  
 – at 184,000h: L70B50

### Light technique

Luminaire data for the light planning program DIALux for outdoor lighting, street lighting and indoor lighting as well as luminaire data in EULUMDAT- and IES-format you will find on the BEGA web page [www.bega.com](http://www.bega.com).

### Article No. 77 073

LED colour temperature optionally 4000K or 3000K  
 4000 K – Article number + **K4**  
 3000 K – Article number + **K3**

We supply this luminaire with skid-blocking glass which is denoted by **R** after the article number.

### Accessories

Distribution box for installation in soil  
**70730** Distribution box with 7 cable entries  
 Connection terminals 5 x 4<sup>□</sup>  
**71053** Distribution box with 10 cable entries  
 Connection terminals 6 x 16<sup>□</sup>

A separate instructions for use can be provided upon request.