

BEGA**77 072**

In-ground luminaire



Project · Reference number

Date

Product data sheet

Application

LED location luminaire for flush installation in ground surfaces. Drive-over luminaire for vehicles with pneumatic tyres. Luminaire made of stainless steel and cast stainless steel, characterised by extremely high pressure load of 5,000 kg (49 kN).
– BEGA patent EP 2418419 –
For walk-through public areas, we recommend skid-blocking glass
– see accessories.

Product description

Luminaire made of cast stainless steel and stainless steel
Steel grade number 1.4301
Safety glass, white
Silicone gasket
1,8 m water-resistant connecting cable 07RN8-F 5G 1[□] with implemented water stopper and 1.2 m PVC cable conduit
LED power supply unit
220-240 V ~ 0/50-60 Hz
DC 176-280 V
DALI controllable
A basic isolation exists between power cable and control line
Safety class I
Protection class IP 68 10 m
Dust-tight and water pressure tight
Maximum submersion depth 10 m
Not suitable for permanent operation under water
Pressure load 5,000 kg (49 kN)
Impact strength IK10
Protection against mechanical impacts < 20 joule
Maximum surface temperature 25 °C (measured according to EN 60598 of $t_a = 15$ °C)
CE – Conformity mark
10 – Safety mark
Weight: 8,5 kg

Lamp

Module connected wattage	7.9 W
Luminaire connected wattage	10 W
Rated temperature	$t_a = 25$ °C
Ambient temperature	$t_{a \max} = 30$ °C

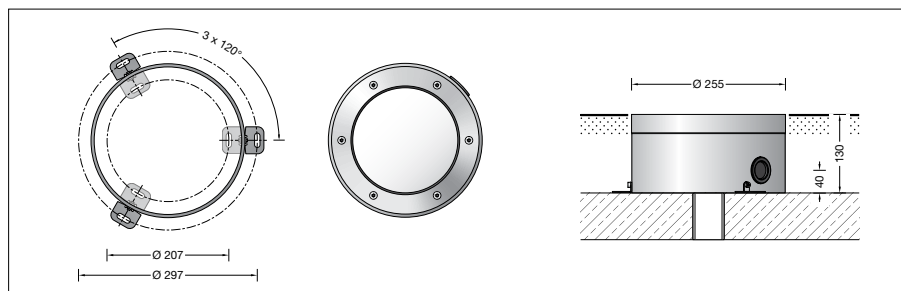
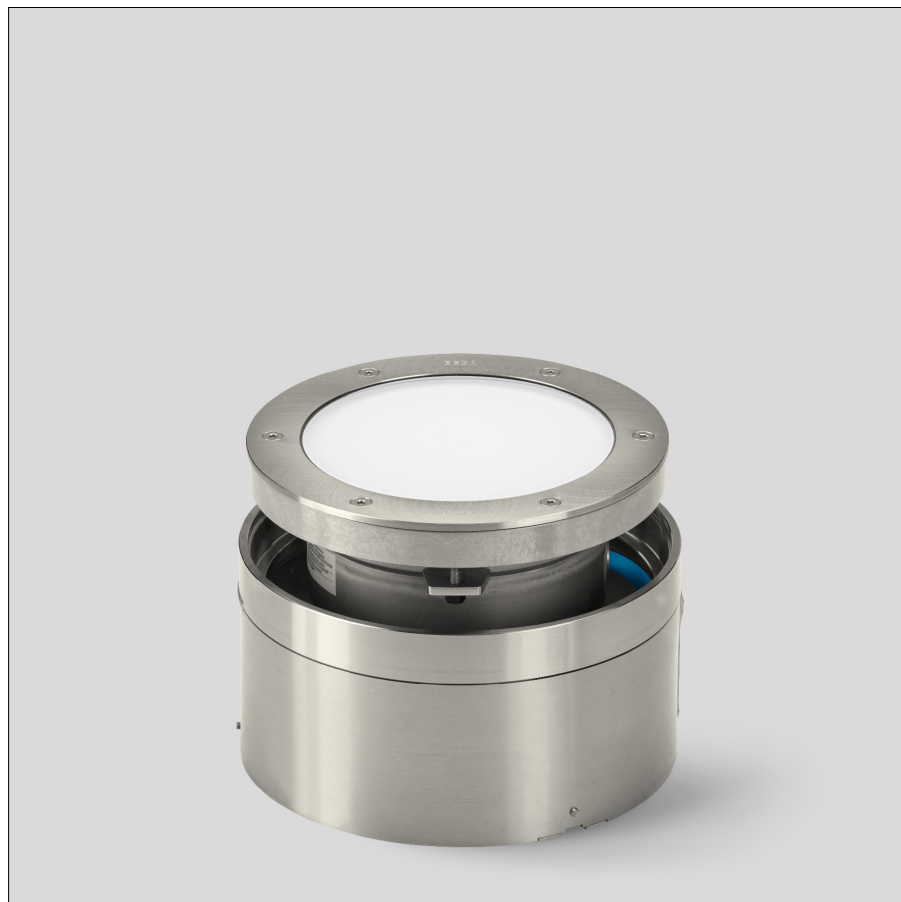
On request we can offer you modifications for environments with higher temperatures as a customized product.

77 072 K4

Module designation	LED-0683/840
Colour temperature	4000 K
Colour rendering index	CRI > 80
Module luminous flux	1185 lm
Luminaire luminous flux	174 lm
Luminaire luminous efficiency	17,4 lm/W

77 072 K3

Module designation	LED-0683/830
Colour temperature	3000 K
Colour rendering index	CRI > 80
Module luminous flux	1125 lm
Luminaire luminous flux	165 lm
Luminaire luminous efficiency	16,5 lm/W

**Service life of the LED**

Ambient temperature $t_a = 25$ °C
– at 400,000h: L70B50
max. ambient temperature $t_a = 30$ °C
– at 380,000h: L70B50

Light technique

Luminaire data for the light planning program DIALux for outdoor lighting, street lighting and indoor lighting as well as luminaire data in EULUMDAT- and IES-format you will find on the BEGA web page www.bega.com.

Inrush current

Inrush current: 5 A / 50 μ s
Maximum number of luminaires of this type per miniature circuit breaker:
B10A: 31 luminaires
B16A: 50 luminaires
C10A: 52 luminaires
C16A: 85 luminaires

Article No. 77 072

LED colour temperature optionally 4000K or 3000K
4000 K – Article number + **K4**
3000 K – Article number + **K3**

We supply this luminaire with skid-blocking glass which is denoted by **R** after the article number.

Accessories

14000847R Skid-blocking glass
BEGA skid-blocking glass with the highest rating R 13 according to DIN 51130 can be used without restriction for all public areas. Abrasion resistance according to EN ISO 10545-7 Class 3

70730 Distribution box

The distribution box is meant for installation in the soil and allows a junction from the supply cable to the luminaire and through-wiring to the next luminaire.
After the electrical connection the distribution box is filled up with gel and closed.