

BEGA**77 071**

In-ground luminaire



Project · Reference number

Date

Product data sheet

Application

LED location luminaire for flush installation in ground surfaces. Drive-over luminaire for vehicles with pneumatic tyres. Luminaire made of stainless steel and cast stainless steel, characterised by extremely high pressure load of 5,000 kg (49 kN).
– BEGA patent EP 2418419 –

Please note:

The minimum distance to illuminated objects above the light distribution opening must be ≥ 0.5 m.

For walk-through public areas, we recommend skid-blocking glass
– see accessories.

Product description

Luminaire made of cast stainless steel and stainless steel
Steel grade number 1.4301
Safety glass, white
1,8 m water-resistant connecting cable H07RN8-F 3G 1,5² with implemented water stopper and 1.2 m PVC cable conduit
LED power supply unit
220-240 V \sim 0/50-60 Hz
DC 176-264 V
Safety class I
Protection class IP 68 10 m
Dust-tight and water pressure tight
Maximum submersion depth 10 m
Not suitable for permanent operation under water
Pressure load 5,000 kg (49 kN)
Impact strength IK09
Protection against mechanical impacts < 10 joule
Maximum surface temperature 25 °C (measured according to EN 60598 of $t_a = 15$ °C)
 – Safety mark
CE – Conformity mark
Weight: 5.9 kg

Inrush current

Inrush current: 20 A / 170 μ s
Maximum number of luminaires of this type per miniature circuit breaker:
B 10A: 31 luminaires
B 16A: 50 luminaires
C 10A: 52 luminaires
C 16A: 85 luminaires

Lamp

Module connected wattage 4 W
Luminaire connected wattage 5.7 W
Rated temperature $t_a = 25$ °C
Ambient temperature $t_{a \max} = 35$ °C

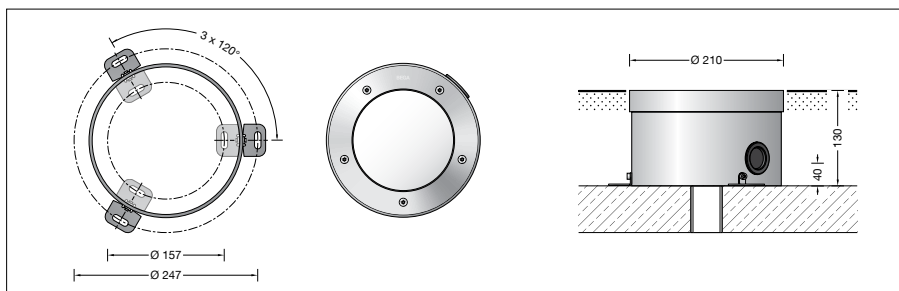
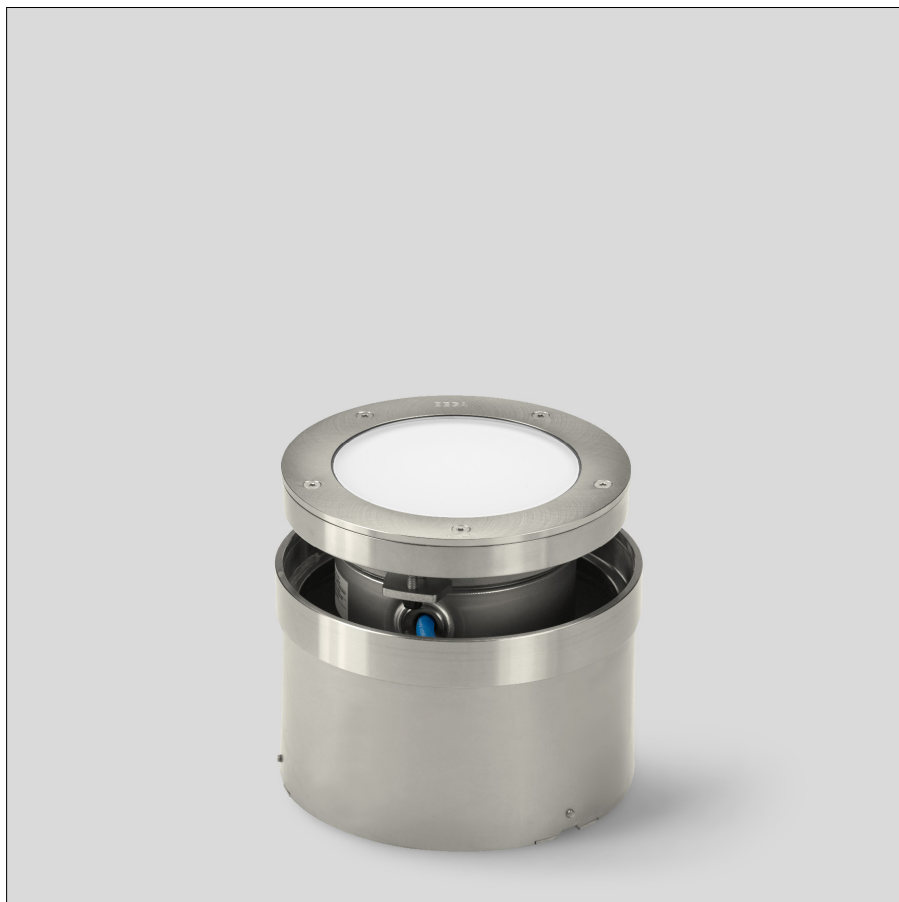
On request we can offer you modifications for environments with higher temperatures as a customized product.

77 071 K4

Module designation LED-0684/840
Colour temperature 4000 K
Colour rendering index CRI > 80
Module luminous flux 590 lm
Luminaire luminous flux 81 lm
Luminaire luminous efficiency 14,2 lm/W

77 071 K3

Module designation LED-0684/830
Colour temperature 3000 K
Colour rendering index CRI > 80
Module luminous flux 560 lm
Luminaire luminous flux 77 lm
Luminaire luminous efficiency 13,5 lm/W

**Service life of the LED**

Ambient temperature $t_a = 25$ °C
– at 400,000h: L70B50

max. ambient temperature $t_a = 35$ °C
– at 400,000h: L70B50

Light technique

Luminaire data for the light planning program DIALux for outdoor lighting, street lighting and indoor lighting as well as luminaire data in EULUMDAT- and IES-format you will find on the BEGA web page www.bega.com.

Article No. 77 071

LED colour temperature optionally 4000K or 3000K
4000 K – Article number + **K4**
3000 K – Article number + **K3**

We supply this luminaire with skid-blocking glass which is denoted by **R** after the article number.

Accessories

140846R Skid-blocking glass
BEGA skid-blocking glass with the highest rating R 13 according to DIN 51130 can be used without restriction for all public areas. Abrasion resistance according to EN ISO 10545-7 Class 3

Distribution box for installation in soil

70 730 Distribution box with 7 cable entries
Connection terminals 5 x 4²

71 053 Distribution box with 10 cable entries
Connection terminals 6 x 16²

A separate instructions for use can be provided upon request.