

BEGA**50 263**

Wall luminaire for indoor use



Project · Reference number



Date

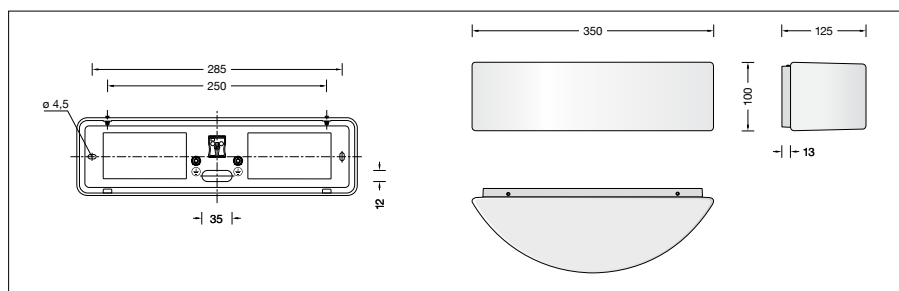
Product data sheet

Application

Free-radiating LED wall luminaire · indoor
luminaire made of hand-blown opal glass, satin
matt and metal housing, for all lighting tasks.

Product description

Metal housing, finish
white enamel
Hand-blown opal glass, satin matt
2 elongated fixing holes
Width 4,5 mm · 285 mm spacing
1 cable entry for through-wiring
for mains cable
Connecting terminals 2.5[□]
Earth conductor connection
LED-Module for mains voltage
220-230 V ~ 50/60 Hz
Safety class I
 – Safety mark
 – Conformity mark
 Weight: 1.5 kg



Lamp

| | |
|-----------------------------|-----------------------------------|
| Luminaire connected wattage | 24 W |
| Rated temperature | $t_a = 25\text{ °C}$ |
| Ambient temperature | $t_{a\text{ max}} = 45\text{ °C}$ |
| Service life criteria | 50 000 h / L_{70} |

50 263 K3

| | |
|-------------------------------|-----------------|
| Module designation | 2x LED-0607/830 |
| Colour temperature | 3000 K |
| Colour rendering index | $R_a > 80$ |
| Module luminous flux | 2160 lm |
| Luminaire luminous flux | 1747 lm |
| Luminaire luminous efficiency | 72,8 lm/W |