

BEGA**50 147.4**

Wall washer for indoor use



Project · Reference number

Date

Product data sheet

Application

LED wall washer · indoor luminaire for the glare free illumination of wall surfaces with the mounting surface being the reflection surface. The light emits upwards and downwards.

Product description

Die-cast aluminium and aluminium housing, finish enamel palladium
 Crystal glass, inside matt
 Reflector made of pure anodised aluminium
 2 mounting holes \varnothing 4.8 mm
 Distance apart 265 x 65 mm
 2 cable entries for through-wiring of mains supply cable \varnothing 7-10.5 mm, max. 5G1.5[□]
 Connection terminal 2.5[□]
 Earth conductor connection
 2-pole connecting terminal for digital control
 LED power supply unit
 220-240 V \sim 0/50-60 Hz
 DC 176-280 V
 DC Start \geq 190 V
 DALI controllable
 A basic isolation exists between power cable and control line
 Safety class I
 – Safety mark
CE – Conformity mark
 Weight: 2.5 kg

Inrush current

Inrush current: 9 A / 22 μ s
 Maximum number of luminaires of this type per miniature circuit breaker:

B10A: 18 luminaires
 B16A: 30 luminaires
 C10A: 31 luminaires
 C16A: 51 luminaires

Lamp

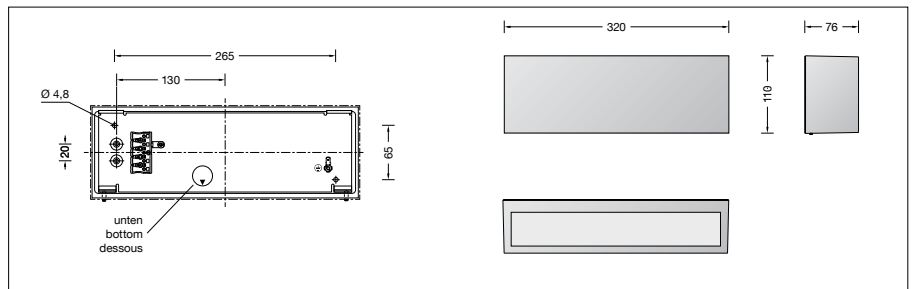
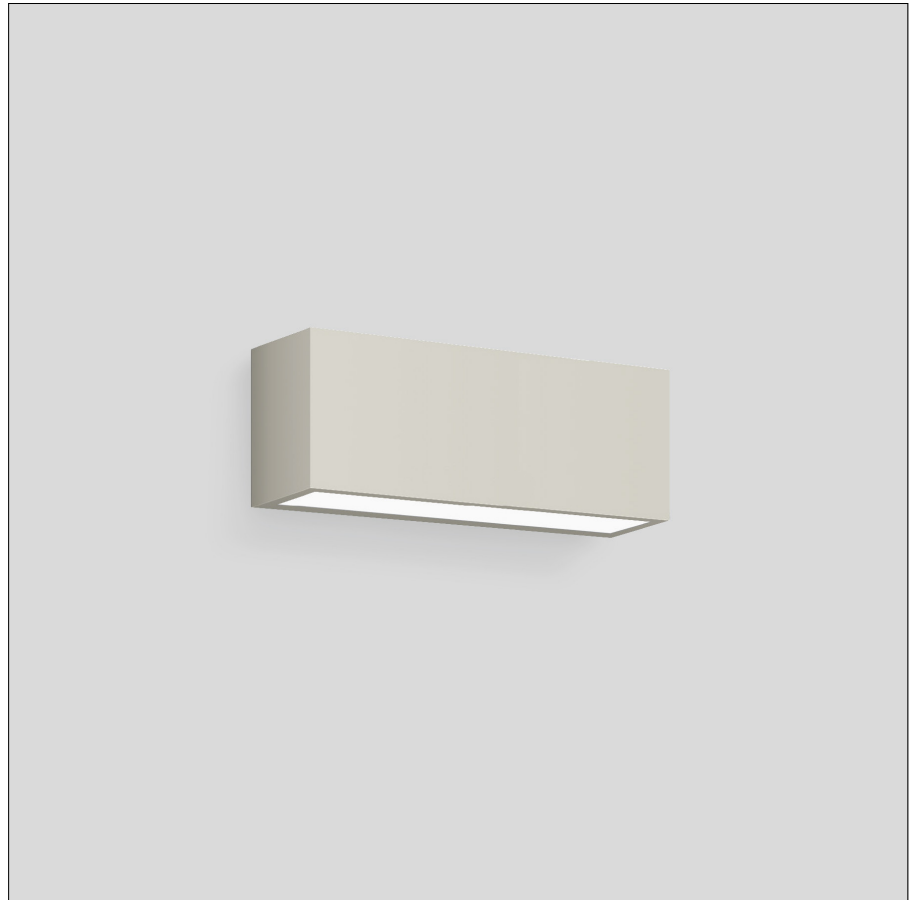
Module connected wattage 33.6 W
 Luminaire connected wattage 39 W
 Rated temperature $t_a = 25$ °C
 Ambient temperature $t_{a,max} = 30$ °C

50 147.4 K3

Module designation 2x LED-0695/930
 Colour temperature 3000 K
 Colour rendering index CRI > 90
 Module luminous flux 4050 lm
 Luminaire luminous flux 3224 lm
 Luminaire luminous efficiency 82,7 lm/W

50 147.4 K4

Module designation 2x LED-0695/940
 Colour temperature 4000 K
 Colour rendering index CRI > 90
 Module luminous flux 4200 lm
 Luminaire luminous flux 3338 lm
 Luminaire luminous efficiency 85,6 lm/W



Service life of the LED

Ambient temperature $t_a = 25$ °C
 – at 391,000h: L70B50

max. ambient temperature $t_a = 30$ °C
 – at 391,000h: L70B50

Light technique

Luminaire data for the light planning program DIALux for outdoor lighting, street lighting and indoor lighting as well as luminaire data in EULUMDAT- and IES-format you will find on the BEGA web page www.bega.com.

Article No. 50 147.4

LED colour temperature optionally 3000K or 4000K
 3000 K – Article number + **K3**
 4000 K – Article number + **K4**

Finish options

- Enamel, white Code number **.1**
- Enamel, palladium Code number **.4**
- Enamel, velvet black Code number **.5**