

**BEGA****33 150**

Ceiling · Wall · Pillar luminaire



Project · Reference number

Date

**Product data sheet****Application**

Unshielded luminaire made of stainless steel for installation under ceilings, on walls as well as on pillars and murals.

By means of the three-ply opal glass the light is distributed softly and uniformly over the glass surface.

**Product description**

Luminaire made of stainless steel

Steel grade no. 1.4401

Opal glass with screw neck

Silicone gasket

2 mounting holes  $\varnothing$  5.5 mm

Distance apart 105 mm

2 cable entries for through-wiring of mains

supply cable  $\varnothing$  7-10.5 mm

Connecting terminal 2.5<sup>2</sup>

with plug connection

Earth conductor connection

LED power supply unit

220-240 V  $\sphericalangle$  0/50-60 Hz

DC 176-280 V

Safety class I

Protection class IP 64

Dust-tight and protection against splash water

Impact strength IK03

Protection against mechanical

impacts < 0.35 joule

– Safety mark

– Conformity mark

Weight: 1.6 kg

**Inrush current**

Inrush current: 20 A / 80  $\mu$ s

Maximum number of luminaires of this type per miniature circuit breaker:

B 10A: 35 luminaires

B 16A: 56 luminaires

C 10A: 58 luminaires

C 16A: 94 luminaires

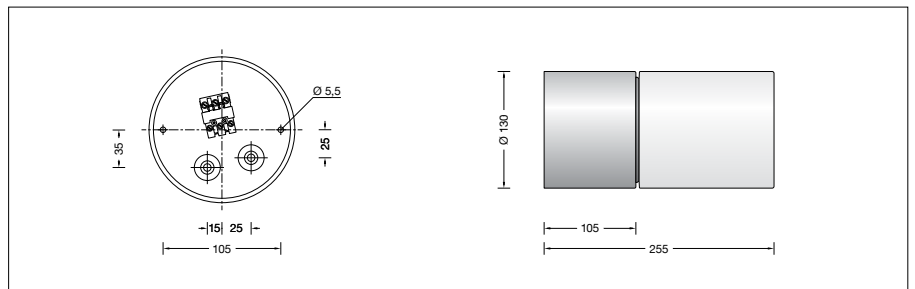
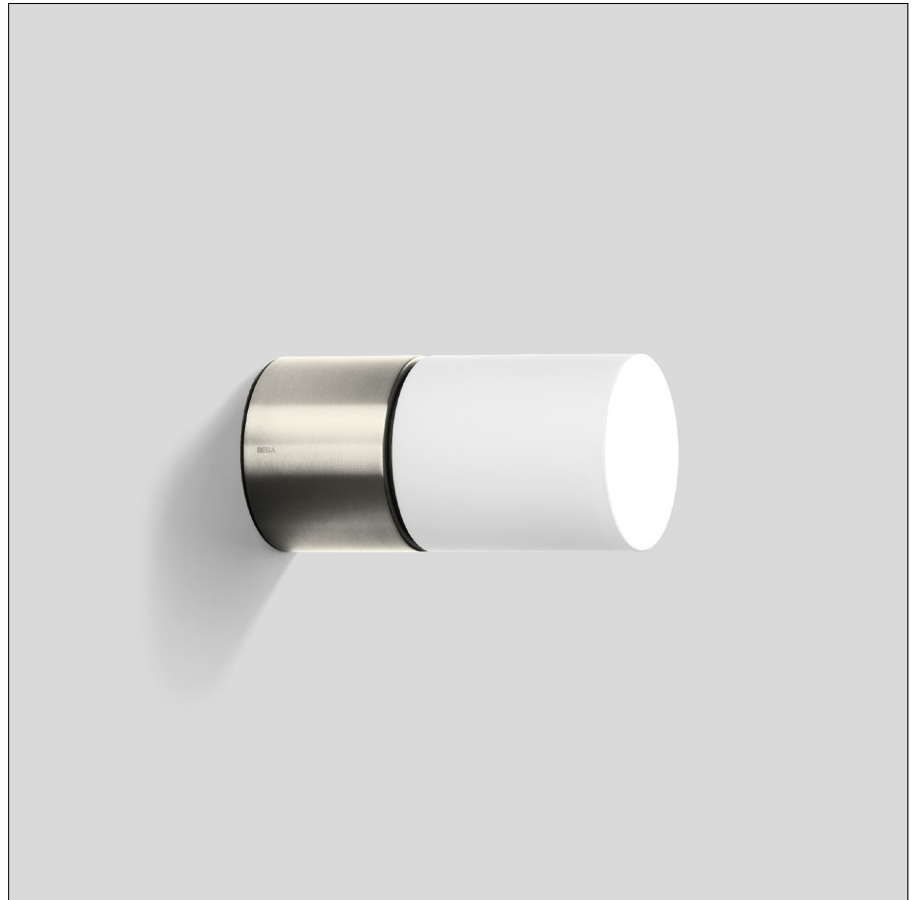
**Lamp**

Module connected wattage 5.8 W

Luminaire connected wattage 7 W

Rated temperature  $t_a = 25$  °C

Ambient temperature  $t_{a \max} = 40$  °C



On request we can offer you modifications for environments with higher temperatures as a customized product.

**33 150 K3**

Module designation LED-0297/830

Colour temperature 3000 K

Colour rendering index CRI > 80

Module luminous flux 1125 lm

Luminaire luminous flux 753 lm

Luminaire luminous efficiency 107,6 lm/W

**Service life · Ambient temperature**

Rated temperature  $t_a = 25$  °C

LED psu: > 50,000 h

LED module: > 200,000 h (L 80 B 50)

100,000 h (L 90 B 50)

Ambient temperature  $t_{a \max} = 40$  °C (100 %)

LED psu: 50,000 h

LED module: 115,000 h (L 80 B 50)

100,000 h (L 80 B 50)

**Light technique**

Luminaire data for the light planning program DIALux for outdoor lighting, street lighting and indoor lighting as well as luminaire data in EULUMDAT- and IES-format you will find on the BEGA web page [www.bega.com](http://www.bega.com).

**Article No. 33 150**

LED colour temperature optionally 3000 K or 4000 K

3000 K – Article number + **K3**

4000 K – Article number + **K4**

**Light distribution**