

BEGA**33 054**

Recessed luminaire



Project · Reference number

Date

Product data sheet

Application

LED luminaire with asymmetrical light distribution for installation in walls or stairs.

Product description

Luminaire made of aluminium alloy, aluminium and stainless steel
 BEGA Tricoat® coating technology
 Clear safety glass
 Silicone gasket
 Fixing is achieved by using two adjustable wedge-shaped claws
 Required recessed opening 245 x 60 mm
 Recessed depth 70 mm
 2 cable entries for through-wiring of mains supply cable \varnothing 7-10.5 mm
 Connection terminal 2.5²
 Earth conductor connection
 LED power supply unit
 220-240 V \sim 0/50-60 Hz
 DC 198-264 V
 Safety class I
 Protection class IP 65
 Dust-tight and protection against water jets
 Impact strength IK09
 Protection against mechanical impacts < 10 joule
 – Safety mark
 CE – Conformity mark
 Weight: 0.8 kg

Inrush current

Inrush current: 27 A / 250 μ s
 Maximum number of luminaires of this type per miniature circuit breaker:
 B10A: 17 luminaires
 B16A: 27 luminaires
 C10A: 28 luminaires
 C16A: 45 luminaires

Lamp

Module connected wattage 5.8 W
 Luminaire connected wattage 7.8 W
 Rated temperature $t_a = 25$ °C
 Ambient temperature $t_{a,max} = 40$ °C
 When installed in heat-insulating material $t_{a,max} = 35$ °C

On request we can offer you modifications for environments with higher temperatures as a customized product.

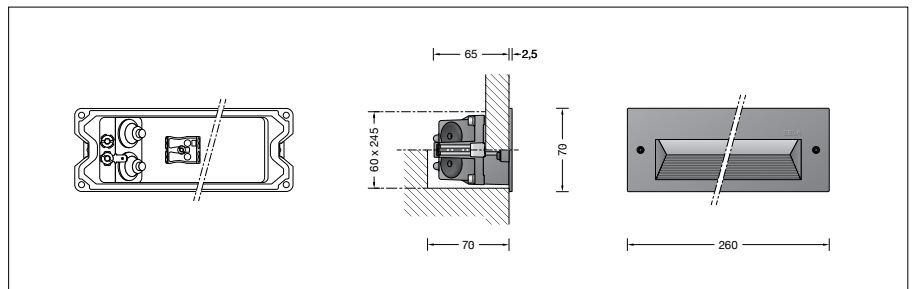
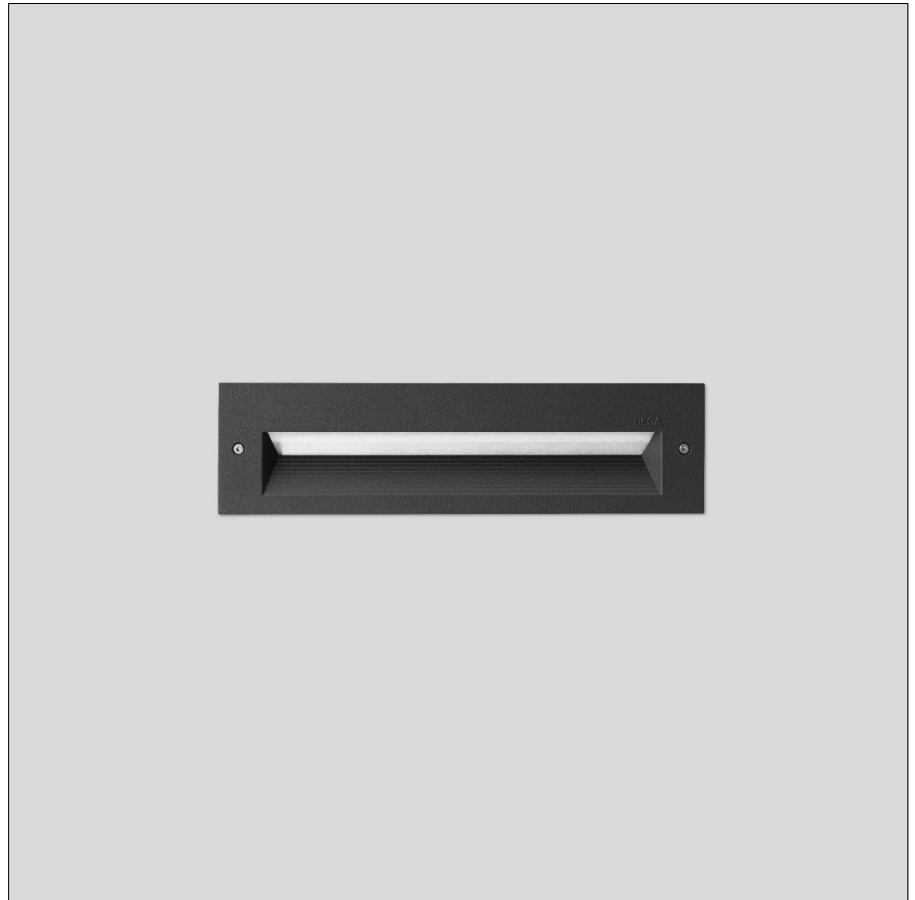
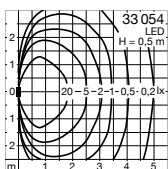
33 054 K3

Module designation	LED-0539/830
Colour temperature	3000 K
Colour rendering index	CRI > 80
Module luminous flux	790 lm
Luminaire luminous flux	342 lm
Luminaire luminous efficiency	43,8 lm/W

33 054 K4

Module designation	LED-0539/840
Colour temperature	4000 K
Colour rendering index	CRI > 80
Module luminous flux	790 lm
Luminaire luminous flux	342 lm
Luminaire luminous efficiency	43,8 lm/W

Light distribution



Service life · Ambient temperature

Rated temperature $t_a = 25$ °C
 LED psu: > 50,000 h
 LED module: > 200,000 h (L 80 B 50)
 100,000 h (L 90 B 50)

Ambient temperature $t_{a,max} = 40$ °C (100 %)
 LED psu: 50,000 h
 LED module: 94,000 h (L 80 B 50)
 100,000 h (L 70 B 50)

Light technique

Luminaire data for the light planning program DIALux for outdoor lighting, street lighting and indoor lighting as well as luminaire data in EULUMDAT- and IES-format you will find on the BEGA web page www.bega.com.

Article No. 33 054

LED colour temperature optionally 3000 K or 4000 K
 3000 K – Article number + **K3**
 4000 K – Article number + **K4**

Colour graphite or silver
 graphite – article number
 silver – article number + **A**

Accessories

10 425 Installation housing
13 520 Installation housing for installation in insulated façades (EWIS)

10 025 Plaster frame
13 504 Plaster frame flush

A separate instructions for use can be provided upon request.