

BEGA**33 017**

Recessed luminaire



Project · Reference number

Date

Product data sheet

Application

Shielded LED luminaire for walls and stairs.

Product description

Luminaire made of aluminium alloy,
aluminium and stainless steel
Matt safety glass
Silicone gasket
Fixing is achieved by using two adjustable
wedge-shaped claws
Required recessed opening 155 x 60 mm
Recessed depth 70 mm
2 cable entries for through-wiring of mains
supply cable \varnothing 7-10.5 mm
Connection terminal 2.5²
Earth conductor connection
LED power supply unit
220-240 V \sim 0/50-60 Hz
DC 176-264 V
Safety class I
Protection class IP 65
Dust-tight and protection against water jets
Impact strength IK09
Protection against mechanical
impacts < 10 joule
 – Safety mark
CE – Conformity mark
Weight: 0.6 kg

Inrush current

Inrush current: 6 A / 102 μ s
Maximum number of luminaires of this
type per miniature circuit breaker:
B10A: 60 luminaires
B16A: 96 luminaires
C10A: 100 luminaires
C16A: 161 luminaires

Lamp

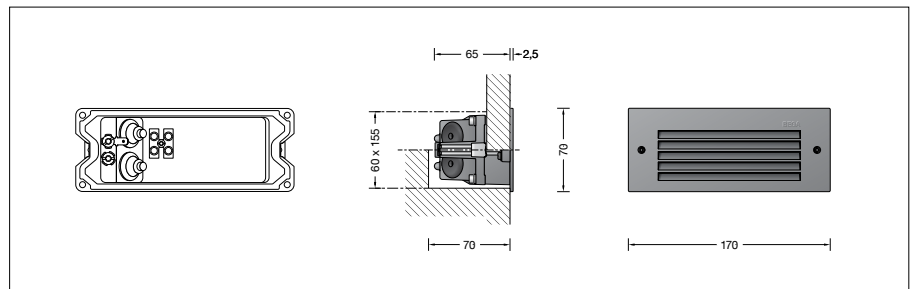
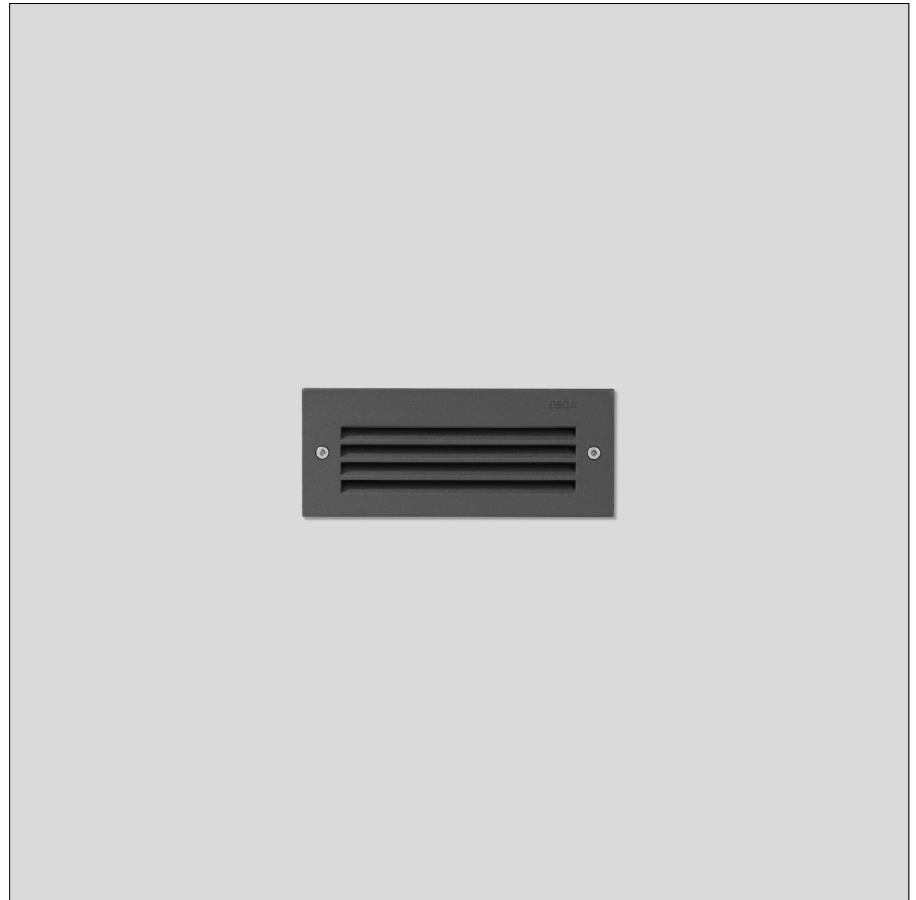
Module connected wattage	1.9 W
Luminaire connected wattage	2.5 W
Rated temperature	$t_a = 25^\circ\text{C}$
Ambient temperature	$t_{a\text{max}} = 55^\circ\text{C}$
When installed in heat-insulating material	$t_{a\text{max}} = 50^\circ\text{C}$

33 017 K3

Module designation	LED-0640/830
Colour temperature	3000 K
Colour rendering index	CRI > 80
Module luminous flux	295 lm
Luminaire luminous flux	32 lm
Luminaire luminous efficiency	12,8 lm/W

33 017 K4

Module designation	LED-0640/840
Colour temperature	4000 K
Colour rendering index	CRI > 80
Module luminous flux	325 lm
Luminaire luminous flux	35 lm
Luminaire luminous efficiency	14 lm/W



Service life · Ambient temperature

Ambient temperature $t_a = 25^\circ\text{C}$	
LED psu:	> 50,000 h
LED module:	130,000 h (L80 B50)
	100,000 h (L80 B50)

Ambient temperature $t_a = 55^\circ\text{C}$	
LED psu:	50,000 h
LED module:	110,000 h (L80 B50)
	100,000 h (L80 B50)

Light technique

Luminaire data for the light planning program
DIALux for outdoor lighting, street lighting and
indoor lighting as well as luminaire data in
EULUMDAT- and IES-format you will find on the
BEGA web page www.bega.com.

Article No. 33 017

LED colour temperature optionally 3000 K
or 4000 K
3000 K – Article number + **K3**
4000 K – Article number + **K4**

Colour graphite or silver
graphite – article number
silver – article number + **A**

Accessories

10 424 Installation housing
13 519 Installation housing for installation in
insulated façades (EWIS)
10 024 Plaster frame
13 503 Plaster frame flush

A separate instructions for use can be provided
upon request.

Light distribution

