

BEGA**31 292**

Wall luminaire



Project · Reference number

Date

Product data sheet

Application

Impact resistant wall luminaire made of massive bronze alloy.

Luminaire for versatile applications where a highly robust construction and corrosion resistance are required.

Product description

Luminaire made of bronze alloy and stainless steel

White crystal glass with optical structure

Reflector made of pure anodised aluminium

2 mounting holes \varnothing 5.5 mm

Distance apart 114 mm

2 cable entries for through-wiring of mains

supply cable \varnothing 7-10,5 mm,

max. 3 G 1.5[□]

Connection terminal 2.5[□]

Earth conductor connection

Lampholder E 27

Safety class I


Protection class IP 65

Dust-tight and protection against water jets

Impact strength IK06

Protection against mechanical

impacts < 1 joule

 – Safety mark

CE – Conformity mark

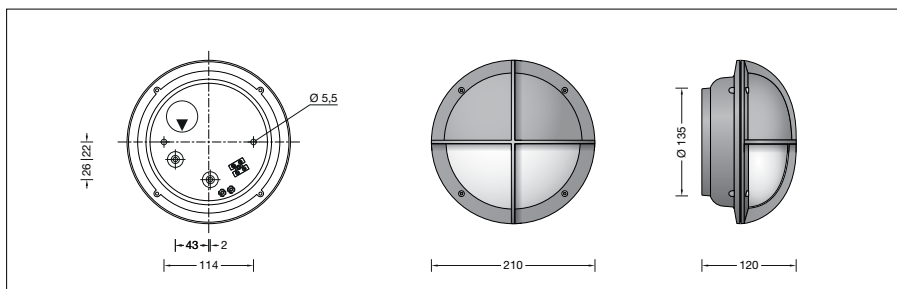
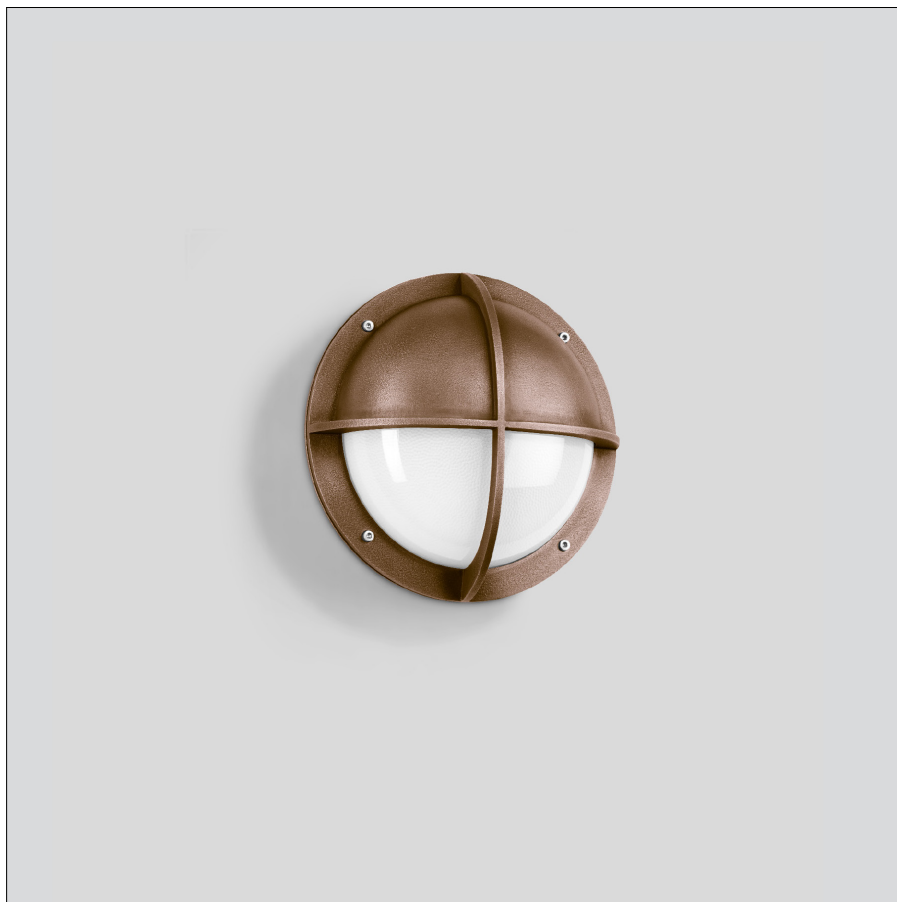
Weight: 3.6 kg

Bronze

The luminaire is made of massive bronze and

delivered with the metal's natural surface.

Time and weather factors create the natural patina characteristic for bronze.



Lamps

Luminaire with lampholder E 27

Lamp output max. 60 W

For this luminaire we recommend the following BEGA LED lamps:

13 510 LED 7 W · 805 lm · 2700 K

13 548 LED 7 W · 805 lm · 2700 K
dimmable

Radio-controlled version (Zigbee 3.0):

13 555 LED 9 W · 805 lm · 2700 K
dimmable

13 556 LED 9 W · 805 lm · 2700-6500 K
dimmable · tunable white

13 557 LED 9.5 W · 805 lm · 2700-6500 K
dimmable · tunable white · RGBW

Detailed technical and lighting data for the lamps can be found in the data sheets on our website.