

Project · Reference number

Date

Product data sheet

Application

Wall luminaire made of massive bronze alloy and stainless steel.
Luminaire for versatile applications where a highly robust construction and corrosion resistance are required.
The fixing system of the luminaire allows an easy installation in enclosed or hollow constructions without additional fixing holes.
For the installation in walls made of concrete or brick work a suitable installation housing is available.

Product description

Luminaire cover made of cast bronze
Luminaire housing made of stainless steel
Steel grade number 1.4301
White crystal glass with optical structure
Fixing is achieved by using three adjustable wedge-shaped claws
2 cable entries for through-wiring of mains supply cable \varnothing 7-10.5 mm
Connection terminal 2.5²
Earth conductor connection
Lampholder E 27
Safety class I
Protection class IP 65
Dust-tight and protection against water jets
Impact strength IK06
Protection against mechanical impacts < 1 joule
CE – Conformity mark
Weight: 2.1 kg

Lamp

Luminaire with lampholder E 27
Lamp output max. 60 W

For this luminaire we recommend the following BEGA LED lamps:

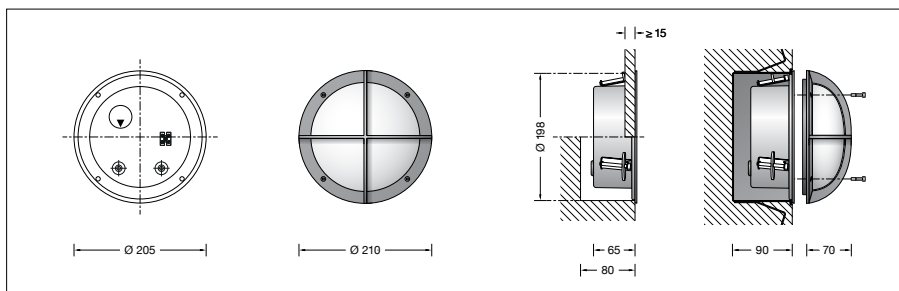
13510 LED 7 W · 805 lm · 2700 K
13548 LED 7 W · 805 lm · 2700 K
dimmmable

13584 LED 7 W · 805 lm · 3000 K
13586 LED 7 W · 805 lm · 3000 K
dimmmable

Radio-controlled version (Zigbee 3.0):

13555 LED 9 W · 805 lm · 2700 K
dimmmable
13556 LED 9 W · 805 lm · 2700-6500 K
dimmmable · tunable white
13557 LED 9.5 W · 805 lm · 2700-6500 K
dimmmable · tunable white · RGBW

Detailed technical and lighting data for the lamps can be found in the data sheets on our website.



Bronze

The luminaire is made of massive bronze and delivered with the metal's natural surface.
Time and weather factors create the natural patina characteristic for bronze.

Accessories

10001 Installation housing

A separate instructions for use can be provided upon request.